

For Research Use Only

# LRMP Polyclonal antibody, PBS Only

Catalog Number: 19498-1-PBS



## Basic Information

**Catalog Number:**

19498-1-PBS

**Size:**

100ug , Concentration: 1 mg/ml by Nanodrop;

**Source:**

Rabbit

**Isotype:**

IgG

**GenBank Accession Number:**

NM\_006152

**GeneID (NCBI):**

4033

**UNIPROT ID:**

Q12912

**Full Name:**

Lymphoid-restricted membrane protein

**Calculated MW:**

62 kDa

**Observed MW:**

70 kDa

**Purification Method:**

Antigen affinity purification

## Applications

**Tested Applications:**

WB, IHC, IF/ICC, Indirect ELISA

**Species Specificity:**

human

## Background Information

LRMP, also named as JAW1, is a Lymphoid restricted integral membrane protein that is localised to the cytoplasmic face of the endoplasmic reticulum.

## Storage

**Storage:**

Store at -80°C.

**Storage Buffer:**

PBS Only

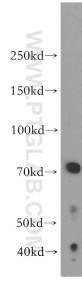
For technical support and original validation data for this product please contact:

T: 1 (888) 4PTGLAB (1-888-478-4522) (toll free in USA), or 1(312) 455-8498 (outside USA)

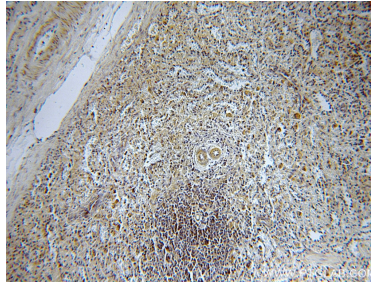
E: [proteintech@ptglab.com](mailto:proteintech@ptglab.com)  
W: [ptglab.com](http://ptglab.com)

This product is exclusively available under Proteintech Group brand and is not available to purchase from any other manufacturer.

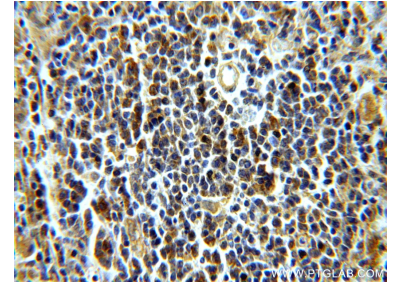
## Selected Validation Data



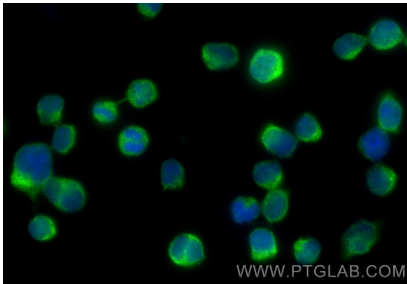
Raji cells were subjected to SDS PAGE followed by western blot with 19498-1-AP (LRMP antibody) at dilution of 1:500 incubated at room temperature for 1.5 hours. This data was developed using the same antibody clone with 19498-1-PBS in a different storage buffer formulation.



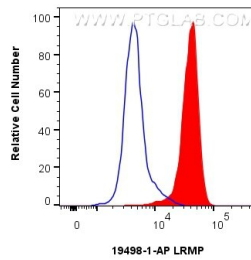
Immunohistochemical analysis of paraffin-embedded human spleen using 19498-1-AP (LRMP antibody) at dilution of 1:100 (under 10x lens). This data was developed using the same antibody clone with 19498-1-PBS in a different storage buffer formulation.



Immunohistochemical analysis of paraffin-embedded human spleen using 19498-1-AP (LRMP antibody) at dilution of 1:100 (under 40x lens). This data was developed using the same antibody clone with 19498-1-PBS in a different storage buffer formulation.



Immunofluorescent analysis of (4% PFA) fixed Jurkat cells using LRMP antibody (19498-1-AP) at dilution of 1:200 and Multi-rAb Coralite® Plus 488-Goat Anti-Rabbit Recombinant Secondary Antibody (H+L) (RGAR002). This data was developed using the same antibody clone with 19498-1-PBS in a different storage buffer formulation.



$1 \times 10^6$  Jurkat cells were intracellularly stained with 0.4 ug LRMP Polyclonal antibody (19498-1-AP) and Coralite®488-Conjugated Goat Anti-Rabbit IgG(H+L) (SA00013-2)(red), or 0.4 ug Rabbit IgG control Rabbit PolyAb (30000-0-AP) (blue). Cells were fixed with 4% PFA and permeabilized with Flow Cytometry Perm Buffer (PF00011-C). This data was developed using the same antibody clone with 19498-1-PBS in a different storage buffer formulation.