

For Research Use Only

Nestin Polyclonal antibody, PBS Only

Catalog Number:19483-1-PBS



Basic Information

Catalog Number: 19483-1-PBS	GenBank Accession Number: NM_006617	Purification Method: Antigen affinity purification
Size: 100ug , Concentration: 1 mg/ml by Nanodrop;	GeneID (NCBI): 10763	
Source: Rabbit	UNIPROT ID: P48681	
Isotype: IgG	Full Name: nestin	
	Calculated MW: 177 kDa	
	Observed MW: 170-180 kDa	

Applications

Tested Applications:
WB, IHC, IF/ICC, IF-P, FC (Intra), Indirect ELISA

Species Specificity:
human, mouse, rat

Background Information

Nestin, also named as NES and Nbla00170, is a class VI intermediate filament protein expressed in stem cells of the central nervous system (CNS) but not in mature CNS cells. Its expression is used extensively as a marker for neural lineage cells derived from human embryonic stem (hES) and induced pluripotent stem (iPS) cells. Nestin is also expressed in non-neural stem cell populations such as pancreatic islet progenitors and hematopoietic progenitors. Nestin can be detected as 220-240 kDa and 240-280 kDa. Studies point toward nestin heavy posttranslational modifications as possibly serving particular functions in podocytes and in a few other particular cell types(PMID: 17210924).

Storage

Storage:
Store at -80°C.

Storage Buffer:
PBS Only

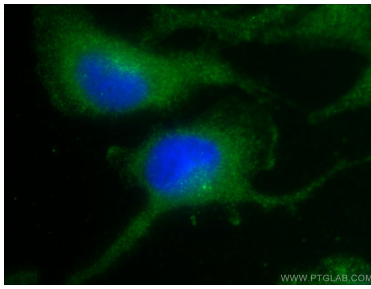
For technical support and original validation data for this product please contact:

T: 1 (888) 4PTGLAB (1-888-478-4522) (toll free
in USA), or 1(312) 455-8498 (outside USA)

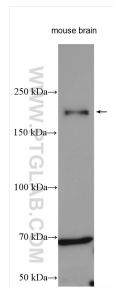
E: proteintech@ptglab.com
W: ptglab.com

This product is exclusively available under Proteintech Group brand and is not available to purchase from any other manufacturer.

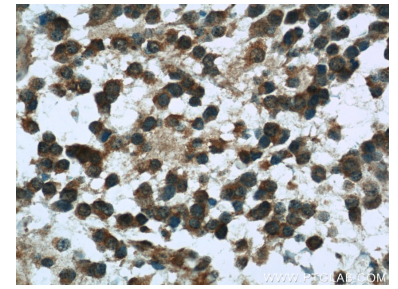
Selected Validation Data



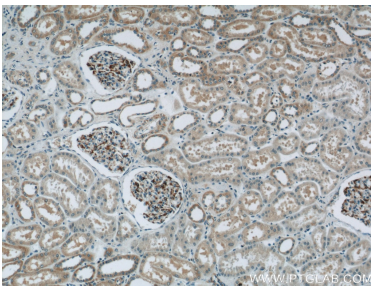
Immunofluorescent analysis of U-251 cells using 19483-1-AP (Nestin antibody) at dilution of 1:25 and Alexa Fluor 488-conjugated AffiniPure Goat Anti-Rabbit IgG(H+L). This data was developed using the same antibody clone with 19483-1-PBS in a different storage buffer formulation.



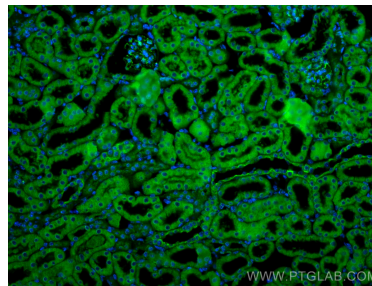
Mouse brain lysates were subjected to SDS PAGE followed by western blot with 19483-1-AP (Nestin antibody) at dilution of 1:500 incubated at room temperature for 1.5 hours. This data was developed using the same antibody clone with 19483-1-PBS in a different storage buffer formulation.



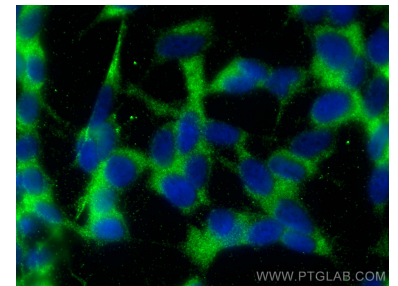
Immunohistochemical analysis of paraffin-embedded human gliomas tissue slide using 19483-1-AP (Nestin Antibody) at dilution of 1:100 (under 40x lens). This data was developed using the same antibody clone with 19483-1-PBS in a different storage buffer formulation.



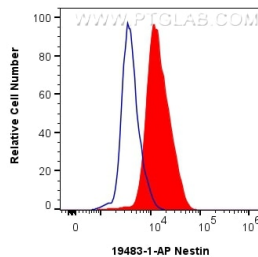
Immunohistochemical analysis of paraffin-embedded human kidney tissue slide using 19483-1-AP (Nestin Antibody) at dilution of 1:400 (under 10x lens). This data was developed using the same antibody clone with 19483-1-PBS in a different storage buffer formulation.



Immunofluorescent analysis of (4% PFA) fixed paraffin-embedded mouse kidney tissue using Nestin antibody (19483-1-AP) at dilution of 1:200 and CoraLite®488-Conjugated AffiniPure Goat Anti-Rabbit IgG(H+L) (SA00013-2). Heat mediated antigen retrieval with Tris-EDTA buffer (pH 9.0). This data was developed using the same antibody clone with 19483-1-PBS in a different storage buffer formulation.



Immunofluorescent analysis of (-20°C Ethanol) fixed SH-SY5Y cells using Nestin antibody (19483-1-AP) at dilution of 1:200 and CoraLite®488-Conjugated AffiniPure Goat Anti-Rabbit IgG(H+L). This data was developed using the same antibody clone with 19483-1-PBS in a different storage buffer formulation.



1×10^6 SH-SY5Y cells were intracellularly stained with 0.4 ug Nestin Polyclonal antibody (19483-1-AP) and CoraLite®488-Conjugated AffiniPure Goat Anti-Rabbit IgG(H+L) (SA00013-2)(red), or 0.4 ug Rabbit IgG control Rabbit PolyAb (30000-0-AP) (blue). Cells were fixed with 4% PFA and permeabilized with Flow Cytometry Perm Buffer (PF00011-C). This data was developed using the same antibody clone with 19483-1-PBS in a different storage buffer formulation.