

For Research Use Only

WDR45/WIPI4 Polyclonal antibody, PBS Only



Catalog Number: 19194-1-PBS

Featured Product

Basic Information

Catalog Number:

19194-1-PBS

Size:

100ug, Concentration: 1 mg/ml by Nanodrop;

Source:

Rabbit

Isotype:

IgG

Immunogen Catalog Number:

AG6741

GenBank Accession Number:

BC000464

GeneID (NCBI):

11152

UNIPROT ID:

Q9Y484

Full Name:

WD repeat domain 45

Calculated MW:

40 kDa

Observed MW:

40 kDa

Purification Method:

Antigen affinity purification

Applications

Tested Applications:

WB, IHC, IF/ICC, ELISA

Species Specificity:

human, mouse, rat

Background Information

WD repeat domain phosphoinositide-interacting protein 4 (WDR45) is also named as WDRX1, WDRX14 and WIPI4, and belongs to the WD repeat PROPPIN family. WDR45 is highly conserved in mammals, and the amino acid sequences of the human, mouse, pig, bovine and horse protein have more than 97% identity (PMID:20505359). WDR45 is component of the autophagy machinery that controls the major intracellular degradation process (PMID:23435086, PMID:28561066). Together with WIPI1, WIPI2 and WIPI3/WDR45B, it forms the WIPI (WD repeat domain, phosphoinositide interacting) protein family. And this is why WDR45 is also known as WIPI4 (PMID:11814058). The best characterized molecular function of WDR45 is promoting lipid transfer together with ATG2 proteins between adjacent membranes. This function at the phagophore-ER membrane contact sites is important for autophagy (PMID:30185561, PMID:31721365). WDR45 is activated by the STK11/AMPK signaling pathway upon starvation. WDR45 is involved in autophagosome assembly downstream of WIPI2, regulating the size of forming autophagosomes (PMID:28561066).

Storage

Storage:

Store at -80°C.

Storage Buffer:

PBS Only

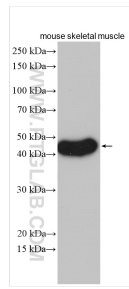
For technical support and original validation data for this product please contact:

T: 1 (888) 4PTGLAB (1-888-478-4522) (toll free in USA), or 1(312) 455-8498 (outside USA)

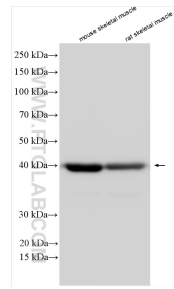
E: proteintech@ptglab.com
W: ptglab.com

This product is exclusively available under Proteintech Group brand and is not available to purchase from any other manufacturer.

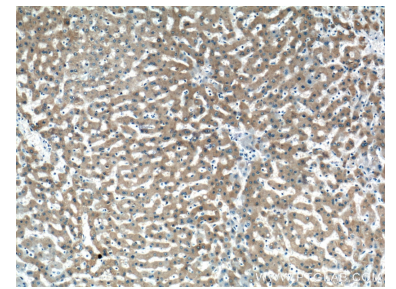
Selected Validation Data



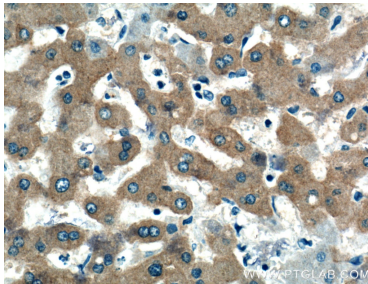
mouse skeletal muscle tissue were subjected to SDS PAGE followed by western blot with 19194-1-AP (WDR45 antibody) at dilution of 1:3000 incubated at room temperature for 1.5 hours. This data was developed using the same antibody clone with 19194-1-PBS in a different storage buffer formulation.



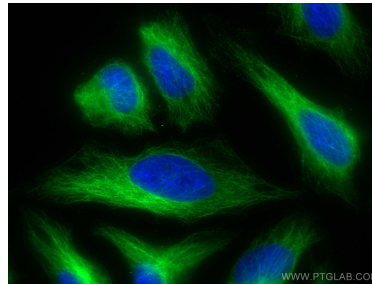
Various lysates were subjected to SDS PAGE followed by western blot with 19194-1-AP (WDR45 antibody) at dilution of 1:1500 incubated at room temperature for 1.5 hours. This data was developed using the same antibody clone with 19194-1-PBS in a different storage buffer formulation.



Immunohistochemical analysis of paraffin-embedded human liver tissue slide using 19194-1-AP (WDR45 Antibody) at dilution of 1:200 (under 10x lens). This data was developed using the same antibody clone with 19194-1-PBS in a different storage buffer formulation.



Immunohistochemical analysis of paraffin-embedded human liver tissue slide using 19194-1-AP (WDR45 Antibody) at dilution of 1:200 (under 40x lens). This data was developed using the same antibody clone with 19194-1-PBS in a different storage buffer formulation.



Immunofluorescent analysis of (-20°C Ethanol) fixed HeLa cells using WDR45/WIP14 antibody (19194-1-AP) at dilution of 1:200 and Coralite®488-Conjugated AffiniPure Goat Anti-Rabbit IgG(H+L). This data was developed using the same antibody clone with 19194-1-PBS in a different storage buffer formulation.