

For Research Use Only

CDK6 Polyclonal antibody

Catalog Number: 19117-1-AP

Featured Product

13 Publications



Basic Information

Catalog Number:

19117-1-AP

Size:

150ul, Concentration: 400 µg/ml by Nanodrop and 267 µg/ml by Bradford method using BSA as the standard;

Source:

Rabbit

Isotype:

IgG

Immunogen Catalog Number:

AG5600

GenBank Accession Number:

BC027989

GeneID (NCBI):

1021

Full Name:

cyclin-dependent kinase 6

Calculated MW:

326 aa, 36 kDa

Observed MW:

36-40 kDa

Purification Method:

Antigen affinity purification

Recommended Dilutions:

WB 1:1000-1:4000

IP 0.5-4.0 µg for 1.0-3.0 mg of total protein lysate

IHC 1:50-1:500

IF 1:200-1:800

Applications

Tested Applications:

FC, IF, IHC, IP, WB, ELISA

Cited Applications:

WB

Species Specificity:

human, mouse, rat

Cited Species:

human, mouse

Note-IHC: suggested antigen retrieval with TE buffer pH 9.0; (*) Alternatively, antigen retrieval may be performed with citrate buffer pH 6.0

Positive Controls:

WB: HEK-293 cells, HeLa cells, Jurkat cells, HepG2 cells, K-562 cells, HSC-T6 cells

IP: Jurkat cells,

IHC: human lung cancer tissue, human gliomas tissue, human endometrial cancer tissue

IF: HeLa cells,

Background Information

CDK6 (Cyclin-dependent kinase 6) is involved in initiation and maintenance of cell cycle exit during cell differentiation and it prevents cell proliferation and regulates negatively cell differentiation, but is required for the proliferation of specific cell types. The molecular weight of CDK6 is 36-40 kDa (PMID: 23563707, 8114739).

Notable Publications

Author	Pubmed ID	Journal	Application
Chiao-Yun Lin	34885073	Cancers (Basel)	WB
Zhifeng Lin	25941902	Cancer Biother Radiopharm	WB
DeLong Meng	25669971	Oncotarget	WB

Storage

Storage:

Store at -20°C. Stable for one year after shipment.

Storage Buffer:

PBS with 0.02% sodium azide and 50% glycerol pH 7.3.

Aliquoting is unnecessary for -20°C storage

*** 20ul sizes contain 0.1% BSA

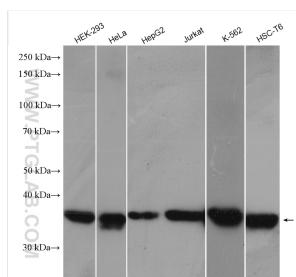
For technical support and original validation data for this product please contact:

T: 1 (888) 4PTGLAB (1-888-478-4522) (toll free in USA), or 1(312) 455-8498 (outside USA)

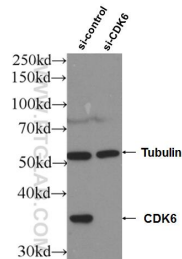
E: proteintech@ptglab.com
W: ptglab.com

This product is exclusively available under Proteintech Group brand and is not available to purchase from any other manufacturer.

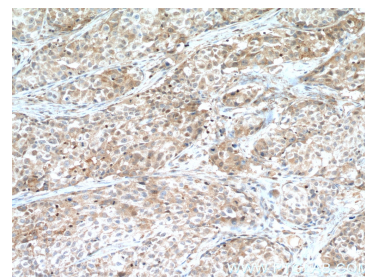
Selected Validation Data



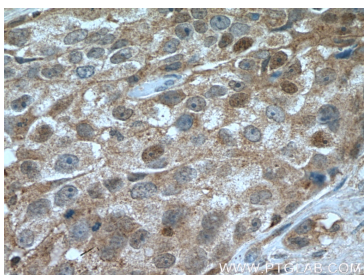
Various lysates were subjected to SDS PAGE followed by western blot with 19117-1-AP (CDK6 antibody) at dilution of 1:2000 incubated at room temperature for 1.5 hours.



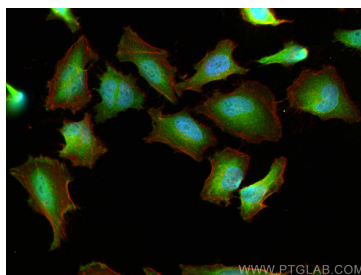
WB result of CDK6 antibody (19117-1-AP; 1:2000; incubated at room temperature for 1.5 hours) with sh-Control and sh-CDK6 transfected HeLa cells.



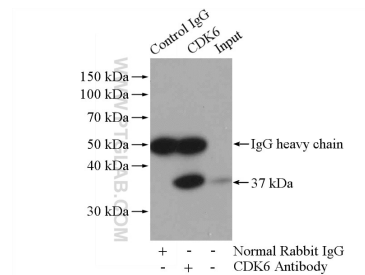
Immunohistochemical analysis of paraffin-embedded human lung cancer tissue slide using 19117-1-AP (CDK6 antibody) at dilution of 1:200 (under 10x lens. Heat mediated antigen retrieval with Tris-EDTA buffer (pH 9.0).



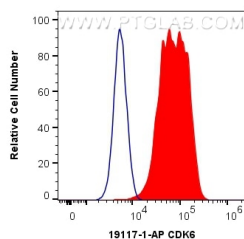
Immunohistochemical analysis of paraffin-embedded human lung cancer tissue slide using 19117-1-AP (CDK6 antibody) at dilution of 1:200 (under 40x lens. Heat mediated antigen retrieval with Tris-EDTA buffer (pH 9.0).



Immunofluorescent analysis of (4% PFA) fixed HeLa cells using CDK6 antibody (19117-1-AP) at dilution of 1:400 and CoraLite®488-Conjugated AffiniPure Goat Anti-Rabbit IgG(H+L), CL594-Phalloidin (red).



IP Result of anti-CDK6 (IP:19117-1-AP, 4ug; Detection:19117-1-AP 1:700) with Jurkat cells lysate 3200ug.



1X10⁶ HeLa cells were intracellularly stained with 0.4 ug Anti-Human CDK6 (19117-1-AP) and CoraLite®488-Conjugated AffiniPure Goat Anti-Rabbit IgG(H+L) at dilution 1:1000 (red), or 0.4 ug Isotype Control. Cells were fixed with 4% PFA and permeabilized with Flow Cytometry Perm Buffer (PF00011-C).