

For Research Use Only

# PIF1 Polyclonal antibody, PBS Only

Catalog Number: 19006-1-PBS



## Basic Information

**Catalog Number:**

19006-1-PBS

**Size:**

100ug, Concentration: 1 mg/ml by Nanodrop;

**Source:**

Rabbit

**Isotype:**

IgG

**Immunogen Catalog Number:**

AG13522

**GenBank Accession Number:**

BC018978

**GeneID (NCBI):**

80119

**UNIPROT ID:**

Q9H611

**Full Name:**

PIF1 5'-to-3' DNA helicase homolog (S. cerevisiae)

**Calculated MW:**

70 kDa

**Observed MW:**

63-73 kDa

**Purification Method:**

Antigen affinity purification

## Applications

**Tested Applications:**

WB, Indirect ELISA

**Species Specificity:**

human, mouse

## Background Information

PIF1, also named as ATP-dependent DNA helicase PIF1, is a 641 amino acid protein, which belongs to the helicase family. PIF1 as a DNA-dependent ATPase and 5'-3' DNA helicase is required for the maintenance of both mitochondrial and nuclear genome stability. PIF1 localizes in the nucleus and is involved in the maintenance of telomeric DNA. PIF1 exists as four isoforms. isoform 1 is a 70 kDa protein and isoform 2 is 63 kDa protein.

## Storage

**Storage:**

Store at -80°C.

**Storage Buffer:**

PBS Only

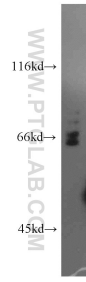
For technical support and original validation data for this product please contact:

T: 1 (888) 4PTGLAB (1-888-478-4522) (toll free in USA), or 1(312) 455-8498 (outside USA)

E: [proteintech@ptglab.com](mailto:proteintech@ptglab.com)  
W: [ptglab.com](http://ptglab.com)

**This product is exclusively available under Proteintech Group brand and is not available to purchase from any other manufacturer.**

## Selected Validation Data



mouse thymus tissue were subjected to SDS PAGE followed by western blot with 19006-1-AP (PIF1 antibody) at dilution of 1:800 incubated at room temperature for 1.5 hours. This data was developed using the same antibody clone with 19006-1-PBS in a different storage buffer formulation.