

For Research Use Only

# CD36 Polyclonal antibody, PBS Only

Catalog Number: 18836-1-PBS

Featured Product



## Basic Information

**Catalog Number:**

18836-1-PBS

**Size:**

100ug, Concentration: 1mg/ml by Nanodrop;

**Source:**

Rabbit

**Isotype:**

IgG

**GenBank Accession Number:**

BC008406

**GeneID (NCBI):**

948

**UNIPROT ID:**

P16671

**Full Name:**

CD36 molecule (thrombospondin receptor)

**Calculated MW:**

472 aa, 53 kDa

**Observed MW:**

88 kDa

**Purification Method:**

Antigen affinity purification

## Applications

**Tested Applications:**

WB, IHC, ELISA

**Species Specificity:**

human

## Background Information

CD36, also named as GP3B and GP4, is an 88-kDa membrane glycoprotein present on platelets, monocytes, erythroid precursors, endothelial cells, and several tumor cell lines. CD36 binds to collagen, thrombospondin, anionic phospholipids, long chain fatty acids and may function in the transport and/or as a regulator of fatty acid transport and oxidized LDL. CD36 may function as a cell adhesion molecule. It mediates cytoadherence of Plasmodium falciparum parasitized erythrocytes. Mutation of CD36 will cause platelet glycoprotein IV deficiency which known as CD36 deficiency. Genetic variations in CD36 are associated with susceptibility to coronary heart disease type 7 (CHDS7).

## Storage

**Storage:**

Store at -80°C.

**Storage Buffer:**

PBS only, pH7.3

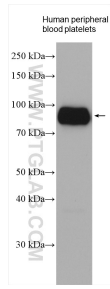
For technical support and original validation data for this product please contact:

T: 1 (888) 4PTGLAB (1-888-478-4522) (toll free in USA), or 1(312) 455-8498 (outside USA)

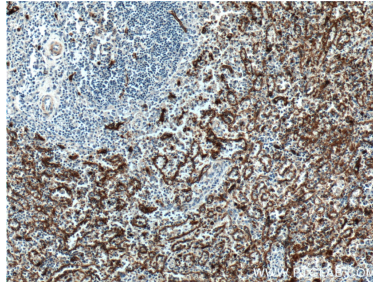
E: [proteintech@ptglab.com](mailto:proteintech@ptglab.com)  
W: [ptglab.com](http://ptglab.com)

This product is exclusively available under Proteintech Group brand and is not available to purchase from any other manufacturer.

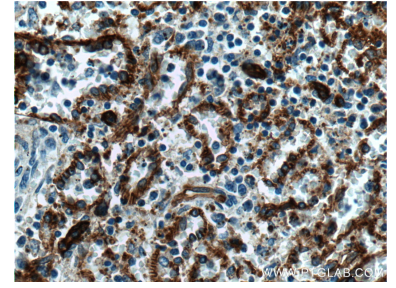
## Selected Validation Data



Human peripheral blood platelets were subjected to SDS PAGE followed by western blot with 18836-1-AP (CD36 antibody) at dilution of 1:1000 incubated at room temperature for 1.5 hours. This data was developed using the same antibody clone with 18836-1-PBS in a different storage buffer formulation.



Immunohistochemical analysis of paraffin-embedded human spleen tissue slide using 18836-1-AP (CD36 antibody) at dilution of 1:800 (under 10x lens). This data was developed using the same antibody clone with 18836-1-PBS in a different storage buffer formulation.



Immunohistochemical analysis of paraffin-embedded human spleen tissue slide using 18836-1-AP (CD36 antibody) at dilution of 1:800 (under 40x lens). This data was developed using the same antibody clone with 18836-1-PBS in a different storage buffer formulation.