

For Research Use Only

# PPIF Polyclonal antibody, PBS Only

Catalog Number:18466-1-PBS



## Basic Information

**Catalog Number:**

18466-1-PBS

**Size:**

100ug , Concentration: 1 mg/ml by Nanodrop;

**Source:**

Rabbit

**Isotype:**

IgG

**Immunogen Catalog Number:**

AG13151

**GenBank Accession Number:**

BC005020

**GeneID (NCBI):**

10105

**UNIPROT ID:**

P30405

**Full Name:**

peptidylprolyl isomerase F

**Calculated MW:**

22 kDa

**Observed MW:**

22 kDa

**Purification Method:**

Antigen affinity purification

## Applications

**Tested Applications:**

WB, IHC, IF/ICC, IP, Indirect ELISA

**Species Specificity:**

human, mouse, rat

## Background Information

PPIF, also named as CYP3, PPIase F and Rotamase F, belongs to the cyclophilin-type PPIase family. PPIases accelerate the folding of proteins. It catalyzes the cis-trans isomerization of proline imidic peptide bonds in oligopeptides. PPIF is a mitochondrial matrix protein involved in the induction of necrotic and apoptotic cell death through the activation of the mitochondrial permeability transition (mPT) pore. This antibody is immunized with full length gene PPIF and absorbed by PPIA. So this antibody is specific to PPIF.

## Storage

**Storage:**

Store at -80°C.

**Storage Buffer:**

PBS Only

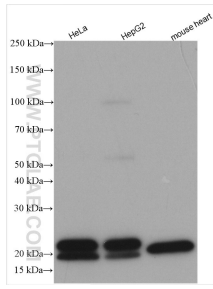
For technical support and original validation data for this product please contact:

T: 1 (888) 4PTGLAB (1-888-478-4522) (toll free in USA), or 1(312) 455-8498 (outside USA)

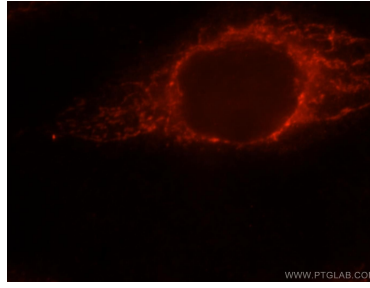
E: [proteintech@ptglab.com](mailto:proteintech@ptglab.com)  
W: [ptglab.com](http://ptglab.com)

**This product is exclusively available under Proteintech Group brand and is not available to purchase from any other manufacturer.**

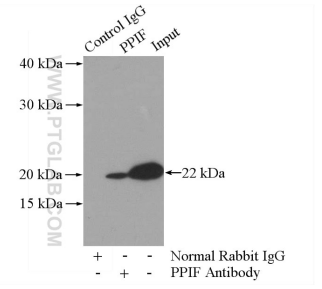
## Selected Validation Data



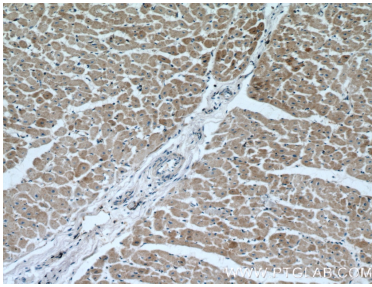
Various lysates were subjected to SDS PAGE followed by western blot with 18466-1-AP (PIPF antibody) at dilution of 1:2000 incubated at room temperature for 1.5 hours. This data was developed using the same antibody clone with 18466-1-PBS in a different storage buffer formulation.



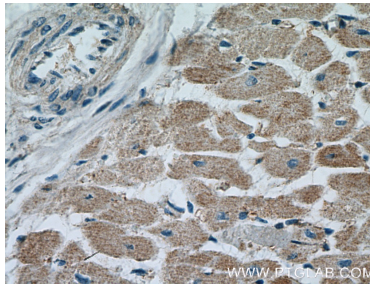
Immunofluorescent analysis of MCF-7 cells, using PPIF antibody 18466-1-AP at 1:25 dilution and Rhodamine-labeled goat anti-rabbit IgG (red). This data was developed using the same antibody clone with 18466-1-PBS in a different storage buffer formulation.



IP result of anti-PPIF (IP:18466-1-AP, 3ug; Detection:18466-1-AP 1:1000) with mouse heart tissue lysate 4000ug. This data was developed using the same antibody clone with 18466-1-PBS in a different storage buffer formulation.



Immunohistochemical analysis of paraffin-embedded human heart tissue slide using 18466-1-AP (PIPF Antibody) at dilution of 1:200 (under 10x lens). This data was developed using the same antibody clone with 18466-1-PBS in a different storage buffer formulation.



Immunohistochemical analysis of paraffin-embedded human heart tissue slide using 18466-1-AP (CYPA Antibody) at dilution of 1:200 (under 40x lens). This data was developed using the same antibody clone with 18466-1-PBS in a different storage buffer formulation.