

For Research Use Only

SHROOM1 Polyclonal antibody

Catalog Number: 18218-1-AP **1 Publications**



Basic Information

Catalog Number: 18218-1-AP	GenBank Accession Number: BC104914	Purification Method: Antigen affinity purification
Size: 150ul , Concentration: 600 µg/ml by Nanodrop and 260 µg/ml by Bradford method using BSA as the standard;	GeneID (NCBI): 134549	Recommended Dilutions: WB 1:500-1:3000 IP 0.5-4.0 ug for IP and 1:500-1:1000 for WB
Source: Rabbit	Full Name: shroom family member 1	
Isotype: IgG	Calculated MW: 852 aa, 91 kDa	
Immunogen Catalog Number: AG12977	Observed MW: 100-130 kDa	

Applications

Tested Applications: IP, WB, ELISA	Positive Controls: WB : MCF7 cells, A375 cells
Cited Applications: WB	IP : MCF-7 cells,
Species Specificity: human	
Cited Species: human	

Background Information

Notable Publications

Author	Pubmed ID	Journal	Application
Mohsan Saeed	32997711	PLoS Pathog	WB

Storage

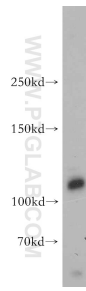
Storage:
Store at -20°C. Stable for one year after shipment.
Storage Buffer:
PBS with 0.02% sodium azide and 50% glycerol pH 7.3.
Aliquoting is unnecessary for -20°C storage

***** 20ul sizes contain 0.1% BSA**

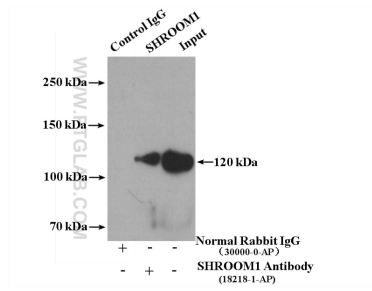
For technical support and original validation data for this product please contact:
T: 1 (888) 4PTGLAB (1-888-478-4522) (toll free in USA), or 1(312) 455-8498 (outside USA)
E: proteintech@ptglab.com
W: ptglab.com

This product is exclusively available under Proteintech Group brand and is not available to purchase from any other manufacturer.

Selected Validation Data



MCF7 cells were subjected to SDS PAGE followed by western blot with 18218-1-AP (SHROOM1 antibody) at dilution of 1:500 incubated at room temperature for 1.5 hours.



IP result of anti-SHROOM1 (IP:18218-1-AP, 4ug; Detection:18218-1-AP 1:700) with MCF-7 cells lysate 3600 ug.