

For Research Use Only

DRD1 Polyclonal antibody, PBS Only

Catalog Number: 17934-1-PBS

Featured Product



Basic Information

Catalog Number:

17934-1-PBS

Size:

100ug, Concentration: 1 mg/ml by Nanodrop;

Source:

Rabbit

Isotype:

IgG

Immunogen Catalog Number:

AG12366

GenBank Accession Number:

BC074978

GeneID (NCBI):

1812

UNIPROT ID:

P21728

Full Name:

dopamine receptor D1

Calculated MW:

446 aa, 49 kDa

Observed MW:

50-75 kDa

Purification Method:

Antigen affinity purification

Applications

Tested Applications:

WB, IF-Fro, ELISA

Species Specificity:

human, mouse, rat

Background Information

Dopamine is a neurotransmitter that plays a crucial role in physical and mental health, such as cardiovascular, hormonal, renal, and central nervous systems (PMID: 29220802). Five subtypes of mammalian dopamine receptors are grouped into two classes, the D1- and D2-like classes. The D1-like class includes D1 and D5 receptors whereas the D2-like class includes D2, D3, D4 subtypes (PMID: 9457173). Dopamine receptor D1 (DRD1) is the most abundant form of dopamine receptor in the central nervous system. DRD1 stimulates adenylate cyclase, modulates D2 receptor activity, regulates neuron growth and differentiation, and mediates several behavioral responses (PMID: 1977312). DRD1 has a calculated molecular weight of 49 kDa, larger apparent molecular weight of 60-80 kDa may be due to glycosylation (PMID: 1281547; 23821371).

Storage

Storage:

Store at -80°C.

Storage Buffer:

PBS only, pH7.3

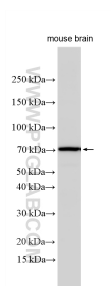
For technical support and original validation data for this product please contact:

T: 1 (888) 4PTGLAB (1-888-478-4522) (toll free in USA), or 1(312) 455-8498 (outside USA)

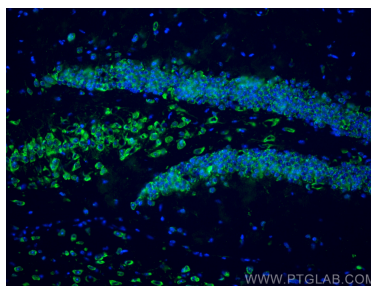
E: proteintech@ptglab.com
W: ptglab.com

This product is exclusively available under Proteintech Group brand and is not available to purchase from any other manufacturer.

Selected Validation Data



Mouse brain lysates were subjected to SDS PAGE followed by western blot with 17934-1-AP (DRD1 antibody) at dilution of 1:2000 incubated at room temperature for 1.5 hours. This data was developed using the same antibody clone with 17934-1-PBS in a different storage buffer formulation.



Immunofluorescent analysis of (4% PFA) fixed frozen OCT-embedded mouse brain tissue using DRD1 antibody (17934-1-AP) at dilution of 1:400 and CoraLite®488-Conjugated Goat Anti-Rabbit IgG(H+L) (SA00013-2). This data was developed using the same antibody clone with 17934-1-PBS in a different storage buffer formulation.