

For Research Use Only

# LGR6 Polyclonal antibody, PBS Only

Catalog Number: 17658-1-PBS

Featured Product



## Basic Information

**Catalog Number:**

17658-1-PBS

**Size:**

100ug, Concentration: 1 mg/ml by Nanodrop;

**Source:**

Rabbit

**Isotype:**

IgG

**Immunogen Catalog Number:**

AG11909

**GenBank Accession Number:**

BC047905

**GeneID (NCBI):**

59352

**UNIPROT ID:**

Q9HBX8

**Full Name:**

leucine-rich repeat-containing G protein-coupled receptor 6

**Calculated MW:**

915 aa, 99 kDa

**Observed MW:**

104 kDa

**Purification Method:**

Antigen affinity purification

## Applications

**Tested Applications:**

WB, IHC, ELISA

**Species Specificity:**

human, mouse, rat

## Background Information

LGR6 (Leucine-rich repeat-containing G-protein coupled receptor 6) is a seven-transmembrane protein. LGR6 is a high affinity receptor of R-spondins that potentiates the canonical Wnt signaling pathway and acts as a marker of multipotent stem cells in the epidermis. It potentially functions as a tumor suppressor. (PMID: 20223988; 20417836; 22615920)

## Storage

**Storage:**

Store at -80°C.

**Storage Buffer:**

PBS Only

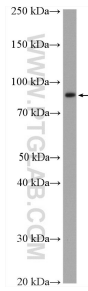
For technical support and original validation data for this product please contact:

T: 1 (888) 4PTGLAB (1-888-478-4522) (toll free in USA), or 1(312) 455-8498 (outside USA)

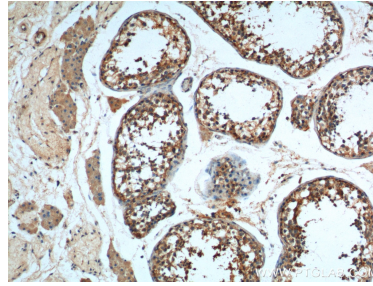
E: [proteintech@ptglab.com](mailto:proteintech@ptglab.com)  
W: [ptglab.com](http://ptglab.com)

This product is exclusively available under Proteintech Group brand and is not available to purchase from any other manufacturer.

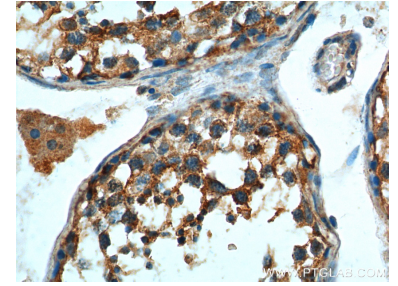
## Selected Validation Data



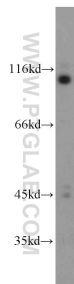
HUVEC cells were subjected to SDS PAGE followed by western blot with 17658-1-AP (LGR6 antibody) at dilution of 1:600 incubated at room temperature for 1.5 hours. This data was developed using the same antibody clone with 17658-1-PBS in a different storage buffer formulation.



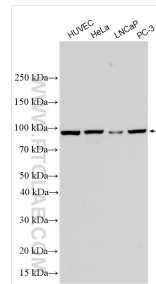
Immunohistochemical analysis of paraffin-embedded human testis tissue slide using 17658-1-AP (LGR6 Antibody) at dilution of 1:200 (under 10x lens). This data was developed using the same antibody clone with 17658-1-PBS in a different storage buffer formulation.



Immunohistochemical analysis of paraffin-embedded human testis tissue slide using 17658-1-AP (LGR6 Antibody) at dilution of 1:200 (under 40x lens). This data was developed using the same antibody clone with 17658-1-PBS in a different storage buffer formulation.



mouse testis tissue were subjected to SDS PAGE followed by western blot with 17658-1-AP (LGR6 antibody) at dilution of 1:100 incubated at room temperature for 1.5 hours. This data was developed using the same antibody clone with 17658-1-PBS in a different storage buffer formulation.



Various lysates were subjected to SDS PAGE followed by western blot with 17658-1-AP (LGR6 antibody) at dilution of 1:1000 incubated at room temperature for 1.5 hours. This data was developed using the same antibody clone with 17658-1-PBS in a different storage buffer formulation.