

For Research Use Only

ACTA1-Specific Polyclonal antibody

Catalog Number: 17521-1-AP

10 Publications



Basic Information

Catalog Number: 17521-1-AP	GenBank Accession Number: NM_001100	Purification Method: Antigen affinity purification
Size: 150ul, Concentration: 260 µg/ml by Nanodrop;	GeneID (NCBI): 58	Recommended Dilutions: WB 1:500-1:2000 IHC 1:50-1:500
Source: Rabbit	Full Name: actin, alpha 1, skeletal muscle	
Isotype: IgG	Calculated MW: 42 kDa	
	Observed MW: 39-42 kDa	

Applications

Tested Applications: FC, IHC, WB, ELISA	Positive Controls:
Cited Applications: IF, WB	WB : human skeletal muscle tissue, mouse skeletal muscle tissue, rat skeletal muscle tissue
Species Specificity: human, mouse, rat	IHC : human skeletal muscle tissue, human hysteryomyoma tissue
Cited Species: human, rat, mouse	
Note-IHC: suggested antigen retrieval with TE buffer pH 9.0; (*) Alternatively, antigen retrieval may be performed with citrate buffer pH 6.0	

Background Information

Actins are highly conserved proteins that are involved in various types of cell motility and are ubiquitously expressed in all eukaryotic cells. The ACTA1 gene encodes skeletal muscle alpha-actin, the principal actin isoform in adult skeletal muscle, which interacts with a variety of proteins to produce the force for muscle contraction. There is only the N-terminal 8 amino acids difference among the actin family members. This antibody is specific to the ACTA1. It does not cross-react with other actin isoforms.

Notable Publications

Author	Pubmed ID	Journal	Application
Hongyi Zhou	34502418	Int J Mol Sci	WB
Qing Wang	34786834	J Cell Mol Med	WB
Yongqiang Ai	34149411	Front Pharmacol	WB

Storage

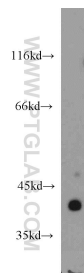
Storage:
Store at -20°C. Stable for one year after shipment.
Storage Buffer:
PBS with 0.02% sodium azide and 50% glycerol pH 7.3.
Aliquoting is unnecessary for -20°C storage

*** 20ul sizes contain 0.1% BSA

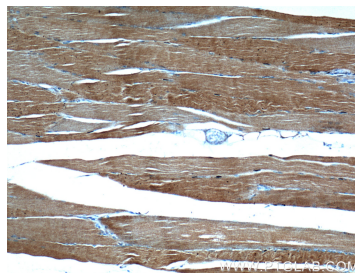
For technical support and original validation data for this product please contact:
T: 1 (888) 4PTGLAB (1-888-478-4522) (toll free in USA), or 1(312) 455-8498 (outside USA)
E: proteintech@ptglab.com
W: ptglab.com

This product is exclusively available under Proteintech Group brand and is not available to purchase from any other manufacturer.

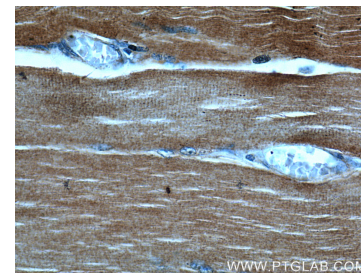
Selected Validation Data



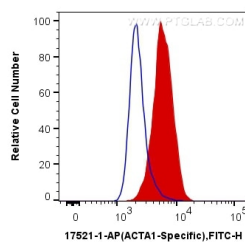
human skeletal muscle tissue were subjected to SDS PAGE followed by western blot with 17521-1-AP (ACTA1-Specific antibody) at dilution of 1:1000 incubated at room temperature for 1.5 hours.



Immunohistochemical analysis of paraffin-embedded human skeletal muscle tissue slide using 17521-1-AP (ACTA1-Specific Antibody) at dilution of 1:500 (under 10x lens).



Immunohistochemical analysis of paraffin-embedded human skeletal muscle tissue slide using 17521-1-AP (ACTA1-Specific Antibody) at dilution of 1:500 (under 40x lens).



1X10⁶ C2C12 cells were intracellularly stained with 0.4 ug Anti-Human ACTA1-Specific (17521-1-AP) and CoraLite®488-Conjugated AffiniPure Goat Anti-Rabbit IgG(H+L) at dilution 1:1000 (red), or 0.4 ug Control Antibody. Cells were fixed with 4% PFA and permeabilized with Flow Cytometry Perm Buffer (PF00011-C).