

For Research Use Only

IFT140 Polyclonal antibody

Catalog Number: 17460-1-AP

Featured Product

76 Publications



Basic Information

Catalog Number:

17460-1-AP

Size:

150ul, Concentration: 900 ug/ml by Nanodrop;

Source:

Rabbit

Isotype:

IgG

Immunogen Catalog Number:

AG11119

GenBank Accession Number:

BC035577

GeneID (NCBI):

9742

UNIPROT ID:

Q96RY7

Full Name:

intraflagellar transport 140 homolog (Chlamydomonas)

Calculated MW:

1462 aa, 165 kDa

Observed MW:

150-165 kDa

Purification Method:

Antigen affinity purification

Recommended Dilutions:

WB 1:1000-1:6000

IP 0.5-4.0 ug for 1.0-3.0 mg of total protein lysate

IHC 1:50-1:500

IF-P 1:200-1:800

IF/ICC 1:400-1:1600

Applications

Tested Applications:

WB, IHC, IF/ICC, IF-P, IP, ELISA

Cited Applications:

WB, IHC, IF, IP, CoIP

Species Specificity:

human, mouse, rat

Cited Species:

human, mouse, canine, zebrafish

Note-IHC: suggested antigen retrieval with TE buffer pH 9.0; (*) Alternatively, antigen retrieval may be performed with citrate buffer pH 6.0

Positive Controls:

WB: HeLa cells, HepG2 cells, mouse testis tissue, rat testis tissue

IP: rat testis tissue,

IHC: mouse testis tissue, human skeletal muscle tissue

IF-P: mouse testis tissue,

IF/ICC: C2C12 cells,

Background Information

IFT140 is a subunit of intraflagellar transport complex A (IFT-A) which is involved in retrograde ciliary transport. RT-PCR analysis showed it is highly expressed in kidney, moderately in ovary, testis, prostate, and lung. IFT140 is localised to the base and tip of primary cilium. IFT140 has a pivotal role in development and function of ciliated cells, and mutations of IFT140 cause skeletal, renal, and retinal ciliopathies. It had been detected as a single band around 140-165 kDa in different reports. (PMID: 20368623, 22282595)

Notable Publications

Author	Pubmed ID	Journal	Application
Lei Wang	30258116	Nat Commun	IF
Jesús Muñoz-Estrada	31391239	J Cell Sci	IF
Carol-Anne Martin	25344692	Nat Genet	IF

Storage

Storage:

Store at -20°C. Stable for one year after shipment.

Storage Buffer:

PBS with 0.02% sodium azide and 50% glycerol, pH7.3

Aliquoting is unnecessary for -20°C storage

*** 20ul sizes contain 0.1% BSA

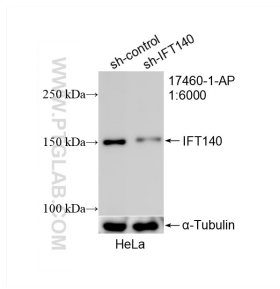
For technical support and original validation data for this product please contact:

T: 1 (888) 4PTGLAB (1-888-478-4522) (toll free in USA), or 1(312) 455-8498 (outside USA)

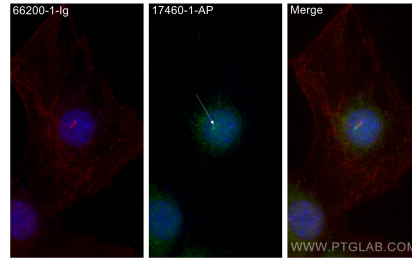
E: proteintech@ptglab.com
W: ptglab.com

This product is exclusively available under Proteintech Group brand and is not available to purchase from any other manufacturer.

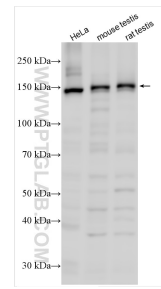
Selected Validation Data



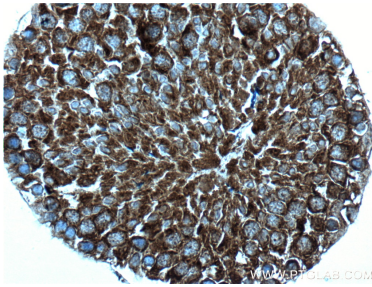
WB result of IFT140 antibody (17460-1-AP; 1:6000); incubated at room temperature for 1.5 hours) with sh-Control and sh-IFT140 transfected HeLa cells.



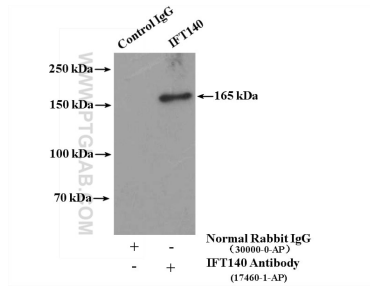
Immunofluorescent analysis of (4% PFA) fixed C2C12 cells using IFT140 antibody (17460-1-AP) at dilution of 1:800 and CoraLite®488-Conjugated AffiniPure Goat Anti-Rabbit IgG(H+L), acetylated Tubulin(Lys40) antibody (66200-1-Ig, Clone: 7E5H8, red).



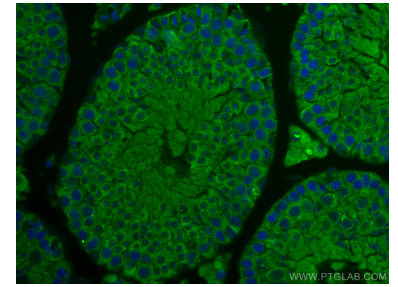
Various lysates were subjected to SDS PAGE followed by western blot with 17460-1-AP (IFT140) antibody at dilution of 1:3000 incubated at room temperature for 1.5 hours.



Immunohistochemical analysis of paraffin-embedded mouse testis tissue slide using 17460-1-AP (IFT140) antibody at dilution of 1:200 (under 40x lens. Heat mediated antigen retrieval with Tris-EDTA buffer (pH 9.0).



IP result of anti-IFT140 (IP:17460-1-AP, 4ug; Detection:17460-1-AP 1:300) with rat testis tissue lysate 4400ug.



Immunofluorescent analysis of (4% PFA) fixed mouse testis tissue using IFT140 antibody (17460-1-AP) at dilution of 1:400 and CoraLite®488-Conjugated AffiniPure Goat Anti-Rabbit IgG(H+L). DAPI (blue).