

For Research Use Only

LY6D Polyclonal antibody

Catalog Number: 17361-1-AP

Featured Product

11 Publications



Basic Information

Catalog Number: 17361-1-AP	GenBank Accession Number: BC031330	Purification Method: Antigen affinity purification
Size: 150ul , Concentration: 700 µg/ml by Nanodrop;	GeneID (NCBI): 8581	Recommended Dilutions: WB 1:500-1:3000 IHC 1:20-1:200
Source: Rabbit	Full Name: lymphocyte antigen 6 complex, locus D	
Isotype: IgG	Calculated MW: 128 aa, 13 kDa	
Immunogen Catalog Number: AG10714	Observed MW: 13-14 kDa	

Applications

Tested Applications: IHC, WB, ELISA	Positive Controls:
Cited Applications: IF, IHC, WB	WB : A431 cells,
Species Specificity: human, mouse	IHC : human tonsillitis tissue, human skin cancer tissue
Cited Species: human, mouse	
Note-IHC: suggested antigen retrieval with TE buffer pH 9.0; (*) Alternatively, antigen retrieval may be performed with citrate buffer pH 6.0	

Background Information

LY6D, also named as E48 and ThB, may act as a specification marker at earliest stage specification of lymphocytes between B- and T-cell development. It marks the earliest stage of B-cell specification.

Notable Publications

Author	Pubmed ID	Journal	Application
Kui Xiao	34714841	PLoS One	WB
Catherine D Yao	33033234	Nat Commun	IF
Renaud Mevel	33025905	Elife	IF

Storage

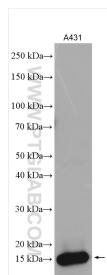
Storage:
Store at -20°C. Stable for one year after shipment.
Storage Buffer:
PBS with 0.02% sodium azide and 50% glycerol pH 7.3.
Aliquoting is unnecessary for -20°C storage

*** 20ul sizes contain 0.1% BSA

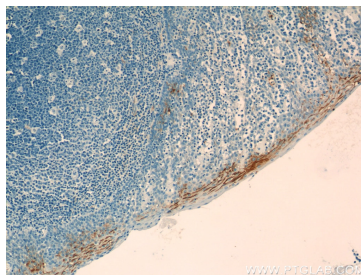
For technical support and original validation data for this product please contact:
T: 1 (888) 4PTGLAB (1-888-478-4522) (toll free in USA), or 1(312) 455-8498 (outside USA)
E: proteintech@ptglab.com
W: ptglab.com

This product is exclusively available under Proteintech Group brand and is not available to purchase from any other manufacturer.

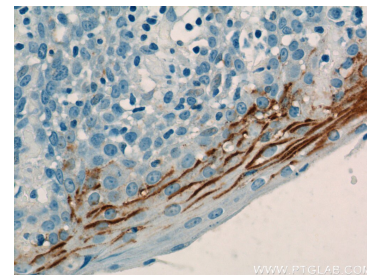
Selected Validation Data



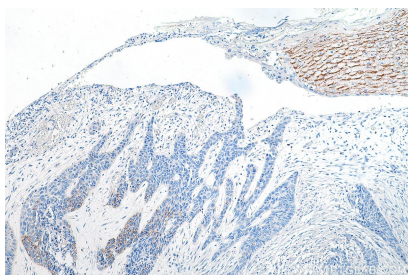
A431 cells were subjected to SDS PAGE followed by western blot with 17361-1-AP (LY6D antibody) at dilution of 1:1500 incubated at room temperature for 1.5 hours.



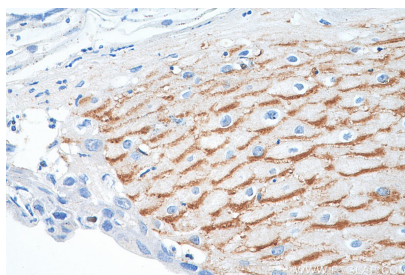
Immunohistochemical analysis of paraffin-embedded human tonsillitis tissue slide using 17361-1-AP (LY6D Antibody) at dilution of 1:50 (under 10x lens).



Immunohistochemical analysis of paraffin-embedded human tonsillitis tissue slide using 17361-1-AP (LY6D Antibody) at dilution of 1:50 (under 40x lens).



Immunohistochemical analysis of paraffin-embedded human skin cancer tissue slide using 17361-1-AP (LY6D antibody) at dilution of 1:200 (under 10x lens).



Immunohistochemical analysis of paraffin-embedded human skin cancer tissue slide using 17361-1-AP (LY6D antibody) at dilution of 1:200 (under 40x lens).