

For Research Use Only

MT1M Polyclonal antibody

Catalog Number: 17281-1-AP **4 Publications**



Basic Information

Catalog Number: 17281-1-AP	GenBank Accession Number: BC028280	Purification Method: Antigen affinity purification
Size: 150ul , Concentration: 850 µg/ml by Nanodrop and 467 µg/ml by Bradford method using BSA as the standard;	GeneID (NCBI): 4499	Recommended Dilutions: IHC 1:50-1:500
Source: Rabbit	Full Name: metallothionein 1M	
Isotype: IgG	Calculated MW: 61 aa, 6 kDa	
Immunogen Catalog Number: AG11048		

Applications

Tested Applications: IHC, ELISA	Positive Controls: IHC : human kidney tissue,
Cited Applications: IF, WB	
Species Specificity: human	
Cited Species: human, mouse	

Note-IHC: suggested antigen retrieval with TE buffer pH 9.0; (*) Alternatively, antigen retrieval may be performed with citrate buffer pH 6.0

Background Information

Notable Publications

Author	Pubmed ID	Journal	Application
Jianqiang Zhu	35533959	Environ Pollut	WB, IF
Rhiannon V McNeill	30884885	Int J Mol Sci	WB
Wenjing Xiao	35253629	Autophagy	WB

Storage

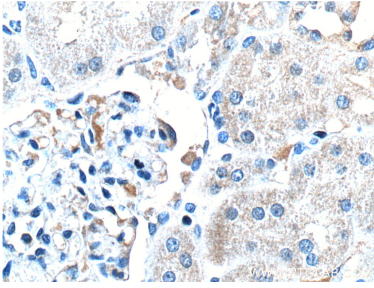
Storage:
Store at -20°C. Stable for one year after shipment.
Storage Buffer:
PBS with 0.02% sodium azide and 50% glycerol pH 7.3.
Aliquoting is unnecessary for -20°C storage

***** 20ul sizes contain 0.1% BSA**

For technical support and original validation data for this product please contact:
T: 1 (888) 4PTGLAB (1-888-478-4522) (toll free in USA), or 1(312) 455-8498 (outside USA)
E: proteintech@ptglab.com
W: ptglab.com

This product is exclusively available under Proteintech Group brand and is not available to purchase from any other manufacturer.

Selected Validation Data



Immunohistochemical analysis of paraffin-embedded human kidney tissue slide using 17281-1-AP (MT1M Antibody) at dilution of 1:50 (under 40x lens).