

For Research Use Only

# UBE2L6 Polyclonal antibody

Catalog Number: 17278-1-AP

Featured Product

5 Publications



## Basic Information

**Catalog Number:**

17278-1-AP

**Size:**

150ul, Concentration: 450 µg/ml by Nanodrop and 380 µg/ml by Bradford method using BSA as the standard;

**Source:**

Rabbit

**Isotype:**

IgG

**Immunogen Catalog Number:**

AG11045

**GenBank Accession Number:**

BC032491

**GeneID (NCBI):**

9246

**UNIPROT ID:**

O14933

**Full Name:**

ubiquitin-conjugating enzyme E2L 6

**Calculated MW:**

153 aa, 18 kDa

**Observed MW:**

18 kDa

**Purification Method:**

Antigen affinity purification

**Recommended Dilutions:**

WB 1:500-1:2000

IP 0.5-4.0 ug for 1.0-3.0 mg of total protein lysate

IF 1:200-1:800

## Applications

**Tested Applications:**

IF, IP, WB, ELISA

**Cited Applications:**

WB, IHC

**Species Specificity:**

human

**Cited Species:**

human

**Positive Controls:**

WB: Jurkat cells,

IP: Jurkat cells,

IF: HeLa cells,

## Notable Publications

Author	Pubmed ID	Journal	Application
Jie Jin	34257278	Cell Death Dis	WB
Christopher Noyes	36653474	Commun Biol	WB
Songbiao Zhu	33647481	Genomics Proteomics Bioinformatics	WB

## Storage

**Storage:**

Store at -20°C. Stable for one year after shipment.

**Storage Buffer:**

PBS with 0.02% sodium azide and 50% glycerol pH 7.3.

Aliquoting is unnecessary for -20°C storage

\*\*\* 20ul sizes contain 0.1% BSA

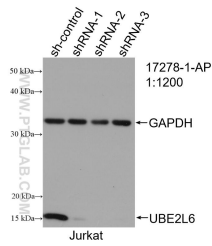
For technical support and original validation data for this product please contact:

T: 1 (888) 4PTGLAB (1-888-478-4522) (toll free in USA), or 1(312) 455-8498 (outside USA)

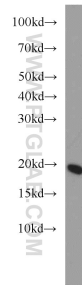
E: proteintech@ptglab.com  
W: ptglab.com

This product is exclusively available under Proteintech Group brand and is not available to purchase from any other manufacturer.

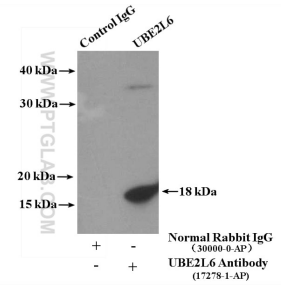
## Selected Validation Data



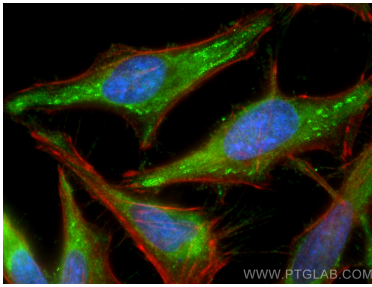
WB result of UBE2L6 antibody (17278-1-AP; 1:1200; incubated at room temperature for 1.5 hours) with sh-Control and sh-UBE2L6 transfected Jurkat cells.



Jurkat cells were subjected to SDS PAGE followed by western blot with 17278-1-AP (UBE2L6 antibody) at dilution of 1:1000 incubated at room temperature for 1.5 hours.



IP result of anti-UBE2L6 (IP:17278-1-AP, 4ug; Detection:17278-1-AP 1:1000) with Jurkat cells lysate 2000ug.



Immunofluorescent analysis of (-20°C Ethanol) fixed HeLa cells using UBE2L6 antibody (17278-1-AP) at dilution of 1:400 and CoraLite®488-Conjugated AffiniPure Goat Anti-Rabbit IgG(H+L), CL594-Phalloidin (red).