

For Research Use Only

GFAP Polyclonal antibody, PBS Only

Catalog Number: 16825-1-PBS

Featured Product



Basic Information

Catalog Number:

16825-1-PBS

Size:

100ug , Concentration: 1 mg/ml by Nanodrop;

Source:

Rabbit

Isotype:

IgG

Immunogen Catalog Number:

AG10423

GenBank Accession Number:

BC013596

GeneID (NCBI):

2670

UNIPROT ID:

P14136

Full Name:

glial fibrillary acidic protein

Calculated MW:

432 aa, 50 kDa

Observed MW:

45-50 kDa

Purification Method:

Antigen affinity purification

Applications

Tested Applications:

WB, IHC, IF/ICC, IF-P, IF-Fro, Indirect ELISA

Species Specificity:

human, mouse, rat

Background Information

GFAP (Glial fibrillary acidic protein), an intermediate-filament (IF) protein, is specifically expressed in cells of astroglial lineage and is widely used to mark astroglia in the brain. It is also used as a marker for intracranial and intraspinal tumors arising from astrocytes.

Storage

Storage:

Store at -80°C.

Storage Buffer:

PBS only, pH7.3

For technical support and original validation data for this product please contact:

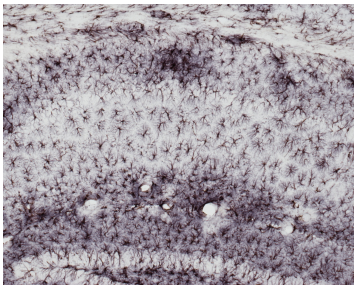
T: 1 (888) 4PTGLAB (1-888-478-4522) (toll free in USA), or 1(312) 455-8498 (outside USA)

E: proteintech@ptglab.com

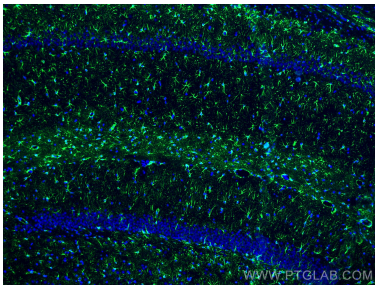
W: ptglab.com

This product is exclusively available under Proteintech Group brand and is not available to purchase from any other manufacturer.

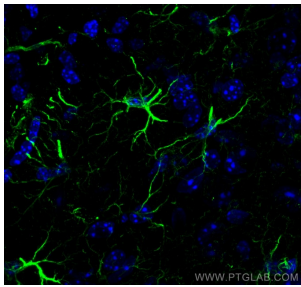
Selected Validation Data



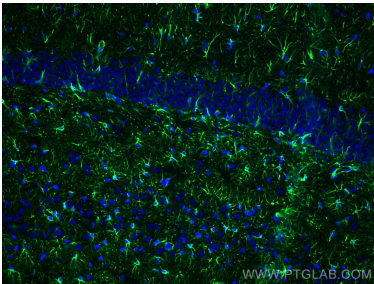
Immunohistochemical analysis of paraffin-embedded Hippocampus tissue slide from Alzheimer Mouse Model using 16825-1-AP (GFAP antibody) at dilution of 1:50000 (under 10x lens). Data from Neuroscience Associates, Inc. This data was developed using the same antibody clone with 16825-1-PBS in a different storage buffer formulation.



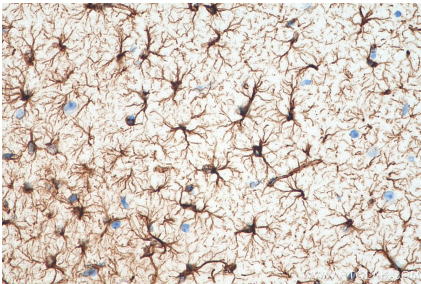
Immunofluorescent analysis of (4% PFA) fixed paraffin-embedded rat brain tissue using GFAP antibody (16825-1-AP) at dilution of 1:200 and CoraLite®488-Conjugated AffiniPure Goat Anti-Rabbit IgG(H+L). Heat mediated antigen retrieval with Tris-EDTA buffer (pH 9.0). This data was developed using the same antibody clone with 16825-1-PBS in a different storage buffer formulation.



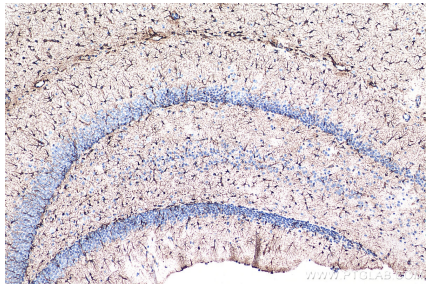
Immunofluorescent analysis of (4% PFA) fixed frozen OCT-embedded mouse brain tissue using 16825-1-AP (GFAP antibody) at dilution of 1:1000 and CoraLite®488-Conjugated AffiniPure Goat Anti-Rabbit IgG(H+L). This data was developed using the same antibody clone with 16825-1-PBS in a different storage buffer formulation.



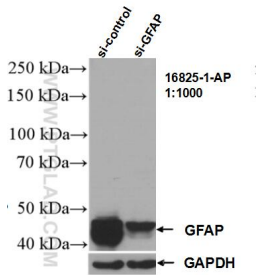
Immunofluorescent analysis of (4% PFA) fixed paraffin-embedded rat brain tissue using GFAP antibody (16825-1-AP) at dilution of 1:200 and CoraLite®488-Conjugated AffiniPure Goat Anti-Rabbit IgG(H+L). Heat mediated antigen retrieval with Tris-EDTA buffer (pH 9.0). This data was developed using the same antibody clone with 16825-1-PBS in a different storage buffer formulation.



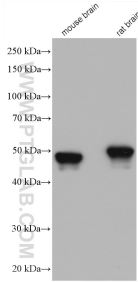
Immunohistochemical analysis of paraffin-embedded mouse brain tissue slide using 16825-1-AP (GFAP antibody) at dilution of 1:5000 (under 40x lens). Heat mediated antigen retrieval with Tris-EDTA buffer (pH 9.0). This data was developed using the same antibody clone with 16825-1-PBS in a different storage buffer formulation.



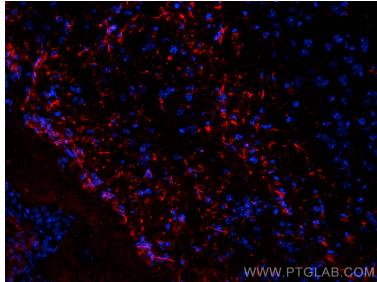
Immunohistochemical analysis of paraffin-embedded mouse brain tissue slide using 16825-1-AP (GFAP antibody) at dilution of 1:5000 (under 40x lens). Heat mediated antigen retrieval with Tris-EDTA buffer (pH 9.0). This data was developed using the same antibody clone with 16825-1-PBS in a different storage buffer formulation.



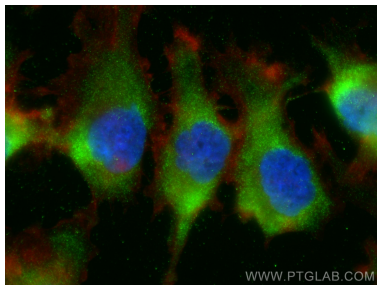
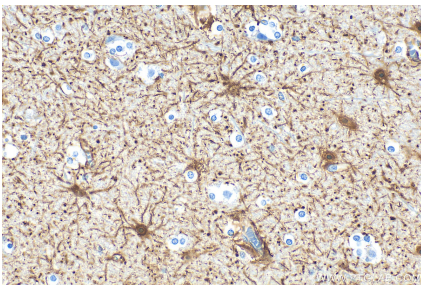
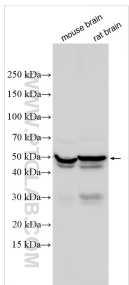
WB result of GFAP antibody (16825-1-AP; 1:1000; incubated at room temperature for 1.5 hours) with sh-Control and sh-GFAP transfected U-251 cells. This data was developed using the same antibody clone with 16825-1-PBS in a different storage buffer formulation.



Various lysates were subjected to SDS PAGE followed by western blot with 16825-1-AP (GFAP antibody) at dilution of 1:5000 incubated at room temperature for 1.5 hours. This data was developed using the same antibody clone with 16825-1-PBS in a different storage buffer formulation.



Immunofluorescent analysis of (4% PFA) fixed frozen OCT-embedded mouse brain tissue using GFAP antibody (16825-1-AP) at dilution of 1:200 and CoraLite®594-Conjugated AffiniPure Goat Anti-Rabbit IgG(H+L) (SA00013-4). This data was developed using the same antibody clone with 16825-1-PBS in a different storage buffer formulation.



Various lysates were subjected to SDS PAGE followed by western blot with 16825-1-AP (GFAP antibody) at dilution of 1:200000 incubated at room temperature for 1.5 hours. This data was developed using the same antibody clone with 16825-1-PBS in a different storage buffer formulation.

Immunohistochemical analysis of paraffin-embedded human brain tissue slide using 16825-1-AP (GFAP antibody) at dilution of 1:2000 (under 40x lens). Heat mediated antigen retrieval with Tris-EDTA buffer (pH 9.0). This data was developed using the same antibody clone with 16825-1-PBS in a different storage buffer formulation.

Immunofluorescent analysis of (-20°C Ethanol) fixed A172 cells using GFAP antibody (16825-1-AP) at dilution of 1:200 and CoraLite®488-Conjugated Goat Anti-Rabbit IgG(H+L) (SA00013-2), CL594-Phalloidin (red). This data was developed using the same antibody clone with 16825-1-PBS in a different storage buffer formulation.