

For Research Use Only

# CRK Polyclonal antibody

Catalog Number: 16685-1-AP



## Basic Information

<b>Catalog Number:</b> 16685-1-AP	<b>GenBank Accession Number:</b> BC008506	<b>Purification Method:</b> Antigen affinity purification
<b>Size:</b> 150ul , Concentration: 650 µg/ml by Nanodrop and 380 µg/ml by Bradford method using BSA as the standard;	<b>GeneID (NCBI):</b> 1398	<b>Recommended Dilutions:</b> WB 1:1000-1:4000 IHC 1:400-1:1600 IF 1:50-1:500
<b>Source:</b> Rabbit	<b>Full Name:</b> v-crk sarcoma virus CT10 oncogene homolog (avian)	
<b>Isotype:</b> IgG	<b>Calculated MW:</b> 34 kDa	
<b>Immunogen Catalog Number:</b> AG10016	<b>Observed MW:</b> 34 kDa	

## Applications

<b>Tested Applications:</b> IF, IHC, WB, ELISA	<b>Positive Controls:</b>
<b>Species Specificity:</b> human, mouse	<b>WB:</b> NIH/3T3 cells, A549 cells, PC-3 cells
<b>Note-IHC: suggested antigen retrieval with TE buffer pH 9.0; (*) Alternatively, antigen retrieval may be performed with citrate buffer pH 6.0</b>	<b>IHC:</b> human urothelial carcinoma tissue,
	<b>IF:</b> HeLa cells, PC-3 cells

## Background Information

### Storage

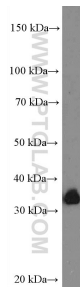
**Storage:**  
Store at -20°C. Stable for one year after shipment.  
**Storage Buffer:**  
PBS with 0.02% sodium azide and 50% glycerol pH 7.3.  
Aliquoting is unnecessary for -20°C storage

\*\*\* 20ul sizes contain 0.1% BSA

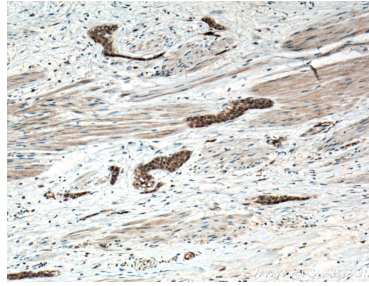
For technical support and original validation data for this product please contact:  
T: 1 (888) 4PTGLAB (1-888-478-4522) (toll free in USA), or 1(312) 455-8498 (outside USA)  
E: proteintech@ptglab.com  
W: ptglab.com

This product is exclusively available under Proteintech Group brand and is not available to purchase from any other manufacturer.

## Selected Validation Data



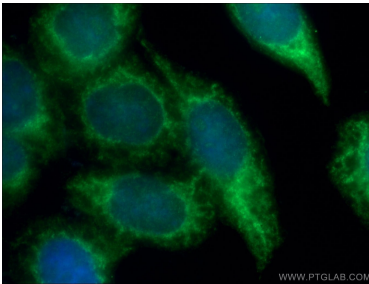
NIH/3T3 cells were subjected to SDS PAGE followed by western blot with 16685-1-AP (CRK Antibody) at dilution of 1:2000 incubated at room temperature for 1.5 hours.



Immunohistochemical analysis of paraffin-embedded human urothelial carcinoma tissue slide using 16685-1-AP (CRK antibody) at dilution of 1:800 (under 10x lens. Heat mediated antigen retrieval with Tris-EDTA buffer (pH 9.0).



Immunohistochemical analysis of paraffin-embedded human urothelial carcinoma tissue slide using 16685-1-AP (CRK antibody) at dilution of 1:800 (under 40x lens. Heat mediated antigen retrieval with Tris-EDTA buffer (pH 9.0).



Immunofluorescent analysis of (-20°C Ethanol) fixed HeLa cells using 16685-1-AP (CRK antibody) at dilution of 1:50 and Alexa Fluor 488-conjugated AffiniPure Goat Anti-Rabbit IgG(H+L).