

For Research Use Only

# CD16 Polyclonal antibody

Catalog Number: 16559-1-AP **36 Publications**



## Basic Information

<b>Catalog Number:</b> 16559-1-AP	<b>GenBank Accession Number:</b> BC017865	<b>Purification Method:</b> Antigen affinity purification
<b>Size:</b> 150ul , Concentration: 650 ug/ml by Nanodrop;	<b>GeneID (NCBI):</b> 2214	<b>Recommended Dilutions:</b> IHC 1:50-1:500 IF-P 1:50-1:500
<b>Source:</b> Rabbit	<b>ENSEMBL Gene ID:</b> ENSG00000203747	
<b>Isotype:</b> IgG	<b>UNIPROT ID:</b> P08637	
<b>Immunogen Catalog Number:</b> AG9787	<b>Full Name:</b> Fc fragment of IgG, low affinity IIIa, receptor (CD16a)	
	<b>Calculated MW:</b> 254 aa, 29 kDa	
	<b>Observed MW:</b> 50-55 kDa	

## Applications

<b>Tested Applications:</b> IHC, IF-P, ELISA	<b>Positive Controls:</b>
<b>Cited Applications:</b> IHC, IF	<b>IHC :</b> human liver tissue, human placenta tissue, human tonsillitis tissue
<b>Species Specificity:</b> human	<b>IF-P :</b> human liver cancer tissue,
<b>Cited Species:</b> human, mouse, rat	
<b>Note-IHC: suggested antigen retrieval with TE buffer pH 9.0; (*) Alternatively, antigen retrieval may be performed with citrate buffer pH 6.0</b>	

## Background Information

CD16 is a 50-70-kDa low affinity Fc receptor found on the surface of natural killer cells, neutrophil polymorphonuclear leukocytes, monocytes and macrophages. CD16 mediates antibody-dependent cellular cytotoxicity (ADCC) and other antibody-dependent responses, such as phagocytosis. CD16 has been identified as Fc receptors Fcγ RIIIa (CD16a) and Fcγ RIIIb (CD16b), encoded by two nearly identical genes, FCGR3A and the FCGR3B.

## Notable Publications

Author	Pubmed ID	Journal	Application
Yi-Na Zhang	36168082	Transl Stroke Res	IF
Qingqing Wang	36152772	Brain Res Bull	IF
Pengfei Zhang	34568032	Front Oncol	IF

## Storage

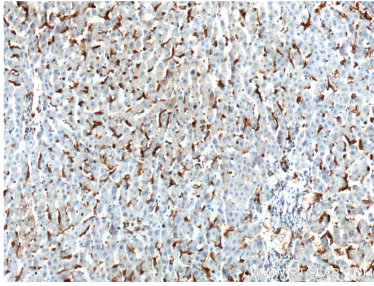
**Storage:**  
Store at -20°C. Stable for one year after shipment.  
**Storage Buffer:**  
PBS with 0.02% sodium azide and 50% glycerol pH 7.3.  
Aliquoting is unnecessary for -20°C storage

\*\*\* 20ul sizes contain 0.1% BSA

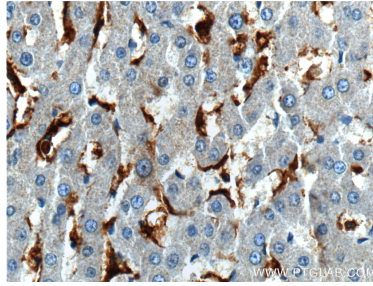
For technical support and original validation data for this product please contact:  
T: 1 (888) 4PTGLAB (1-888-478-4522) (toll free in USA), or 1(312) 455-8498 (outside USA)  
E: proteintech@ptglab.com  
W: ptglab.com

This product is exclusively available under Proteintech Group brand and is not available to purchase from any other manufacturer.

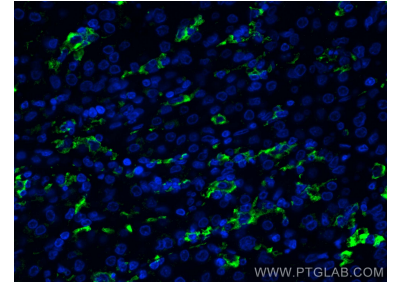
## Selected Validation Data



Immunohistochemical analysis of paraffin-embedded human liver tissue slide using 16559-1-AP (CD16 Antibody) at dilution of 1:200 (under 10x lens).



Immunohistochemical analysis of paraffin-embedded human liver tissue slide using 16559-1-AP (CD16 Antibody) at dilution of 1:200 (under 40x lens).



Immunofluorescent analysis of (4% PFA) fixed human liver cancer tissue using CD16 antibody (16559-1-AP) at dilution of 1:200 and CoraLite®488-Conjugated Goat Anti-Rabbit IgG(H+L).