

For Research Use Only

XPA Polyclonal antibody

Catalog Number: 16462-1-AP **6 Publications**



Basic Information

Catalog Number: 16462-1-AP	GenBank Accession Number: BC014965	Purification Method: Antigen affinity purification
Size: 150ul, Concentration: 220 µg/ml by Nanodrop and 220 µg/ml by Bradford method using BSA as the standard;	GeneID (NCBI): 7507	Recommended Dilutions: WB 1:200-1:1000 IP 0.5-4.0 ug for IP and 1:200-1:1000 for WB IF 1:50-1:500
Source: Rabbit	Full Name: xeroderma pigmentosum, complementation group A	
Isotype: IgG	Calculated MW: 374aa,42 kDa; 273aa,31 kDa	
Immunogen Catalog Number: AG9536	Observed MW: 40 kDa	

Applications

Tested Applications: FC, IF, IP, WB, ELISA	Positive Controls: WB : L02 cells, HeLa cells, MCF-7 cells IP : L02 cells, IF : HepG2 cells,
Cited Applications: IF, WB	
Species Specificity: human, mouse	
Cited Species: human, mouse, zebrafish	

Background Information

XPA, also named as DNA repair protein complementing XP-A cells, is a 272 amino acid protein, which belongs to the XPA family. XPA is expressed in various cell lines and in skin fibroblasts. XPA is involved in DNA excision repair. Initiates repair by binding to damaged sites with various affinities, depending on the photoproduct and the transcriptional state of the region. XPA is required for UV-induced CHEK1 phosphorylation and the recruitment of CEP164 to cyclobutane pyrimidine dimers (CPD), sites of DNA damage after UV irradiation. The calculated molecular weight of XPA is 31 kDa, but modified XPA protein is about 40 kDa (PMID: 17848622).

Notable Publications

Author	Pubmed ID	Journal	Application
Li-Ming Tan	31772670	J Cancer	WB
Zhe Yang	36229075	Genes Dev	WB
Jiaxin Chen	36415059	Adv Healthc Mater	WB,IF

Storage

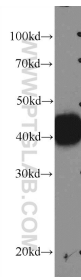
Storage:
Store at -20°C. Stable for one year after shipment.
Storage Buffer:
PBS with 0.02% sodium azide and 50% glycerol pH 7.3.
Aliquoting is unnecessary for -20°C storage

*** 20ul sizes contain 0.1% BSA

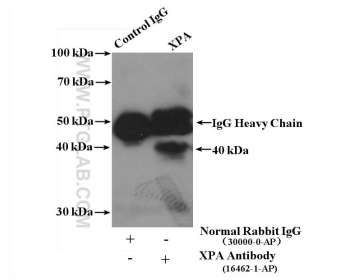
For technical support and original validation data for this product please contact:
T: 1 (888) 4PTGLAB (1-888-478-4522) (toll free in USA), or 1(312) 455-8498 (outside USA)
E: proteintech@ptglab.com
W: ptglab.com

This product is exclusively available under Proteintech Group brand and is not available to purchase from any other manufacturer.

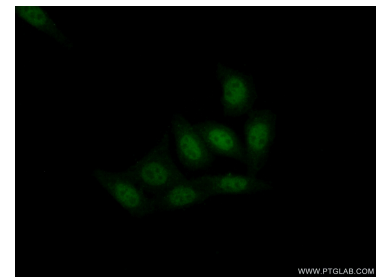
Selected Validation Data



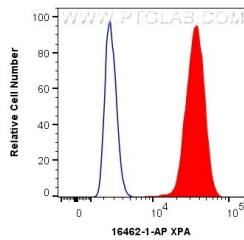
L02 cells were subjected to SDS PAGE followed by western blot with 16462-1-AP (XPA Antibody) at dilution of 1:300 incubated at room temperature for 1.5 hours.



IP result of anti-XPA (IP:16462-1-AP, 4ug; Detection:16462-1-AP 1:300) with L02 cells lysate 3000 ug.



Immunofluorescent analysis of (10% Formaldehyde) fixed HepG2 cells using 16462-1-AP (XPA antibody) at dilution of 1:50 and Alexa Fluor 488-conjugated AffiniPure Goat Anti-Rabbit IgG(H+L).



1X10⁶ HepG2 cells were intracellularly stained with 0.4 ug Anti-Human XPA (16462-1-AP) and CoraLite®488-Conjugated AffiniPure Goat Anti-Rabbit IgG(H+L) at dilution 1:1000 (red), or 0.4 ug Isotype Control. Cells were fixed and permeabilized with Transcription Factor Staining Buffer Kit (PF00011).