

For Research Use Only

Claudin 3 Polyclonal antibody

Catalog Number: 16456-1-AP **45 Publications**



Basic Information

Catalog Number: 16456-1-AP	GenBank Accession Number: BC016056	Purification Method: Antigen affinity purification
Size: 150ul , Concentration: 600 ug/ml by Nanodrop and 300 ug/ml by Bradford method using BSA as the standard;	GeneID (NCBI): 1365	Recommended Dilutions: IP 0.5-4.0 ug for 1.0-3.0 mg of total protein lysate IHC 1:50-1:500
Source: Rabbit	UNIPROT ID: O15551	
Isotype: IgG	Full Name: claudin 3	
Immunogen Catalog Number: AG9411	Calculated MW: 220 aa, 23 kDa	
	Observed MW: 20-24 kDa	

Applications

Tested Applications: IP, IHC, ELISA	Positive Controls: IP : mouse large intestine tissue, IHC : human breast cancer tissue, mouse colon tissue
Cited Applications: IHC, IF	
Species Specificity: human, mouse, rat	
Cited Species: human, mouse, rat, pig, sheep	
Note-IHC: suggested antigen retrieval with TE buffer pH 9.0; (*) Alternatively, antigen retrieval may be performed with citrate buffer pH 6.0	

Background Information

Claudins are a family of proteins that are the most important components of the tight junctions, where they establish the paracellular barrier that controls the flow of molecules in the intercellular space between the cells of an epithelium. 23 claudins have been identified. They are small (20-27 kilodalton (kDa)) proteins with very similar structure. They have four transmembrane domains, with the N-terminus and the C-terminus in the cytoplasm.

Notable Publications

Author	Pubmed ID	Journal	Application
Xin Ran	36040330	J Agric Food Chem	
Jie Cai	31520958	Environ Int	IHC
Yuya Tsurudome	36224445	Mol Biol Rep	

Storage

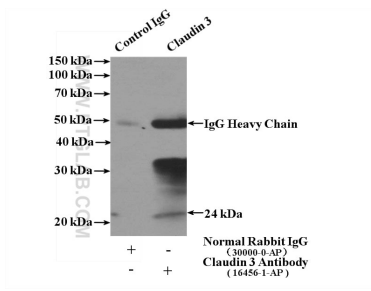
Storage:
Store at -20°C. Stable for one year after shipment.
Storage Buffer:
PBS with 0.02% sodium azide and 50% glycerol, pH7.3
Aliquoting is unnecessary for -20°C storage

*** 20ul sizes contain 0.1% BSA

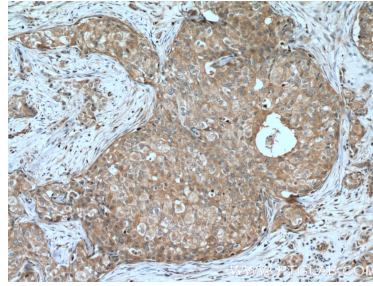
For technical support and original validation data for this product please contact:
T: 1 (888) 4PTGLAB (1-888-478-4522) (toll free in USA), or 1(312) 455-8498 (outside USA)
E: proteintech@ptglab.com
W: ptglab.com

This product is exclusively available under Proteintech Group brand and is not available to purchase from any other manufacturer.

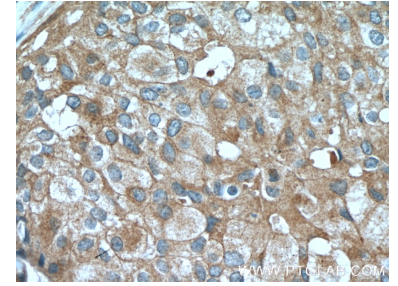
Selected Validation Data



IP result of anti-Claudin 3 (IP:16456-1-AP, 4 μ g; Detection:16456-1-AP 1:300) with mouse large intestine tissue lysate 3200 μ g.



Immunohistochemical analysis of paraffin-embedded human breast cancer tissue slide using 16456-1-AP (Claudin 3 Antibody) at dilution of 1:200 (under 10x lens). Heat mediated antigen retrieval with Tris-EDTA buffer (pH 9.0).



Immunohistochemical analysis of paraffin-embedded human breast cancer tissue slide using 16456-1-AP (Claudin 3 Antibody) at dilution of 1:200 (under 40x lens). Heat mediated antigen retrieval with Tris-EDTA buffer (pH 9.0).