

For Research Use Only

# ENO3 Polyclonal antibody, PBS Only

Catalog Number:16421-1-PBS



## Basic Information

**Catalog Number:**

16421-1-PBS

**Size:**

100ug , Concentration: 1 mg/ml by Nanodrop;

**Source:**

Rabbit

**Isotype:**

IgG

**Immunogen Catalog Number:**

AG9613

**GenBank Accession Number:**

BC017249

**GeneID (NCBI):**

2027

**UNIPROT ID:**

P13929

**Full Name:**

enolase 3 (beta, muscle)

**Calculated MW:**

434 aa, 47 kDa

**Observed MW:**

47 kDa

**Purification Method:**

Antigen affinity purification

## Applications

**Tested Applications:**

WB, IF/ICC, ELISA

**Species Specificity:**

human, mouse

## Background Information

ENO3, also named as MSE, belongs to the enolase family. It appears to have a function in striated muscle development and regeneration. Defects in ENO3 are the cause of glycogen storage disease type 13 (GSD13).

## Storage

**Storage:**

Store at -80°C.

**Storage Buffer:**

PBS Only

For technical support and original validation data for this product please contact:

T: 1 (888) 4PTGLAB (1-888-478-4522) (toll free in USA), or 1(312) 455-8498 (outside USA)

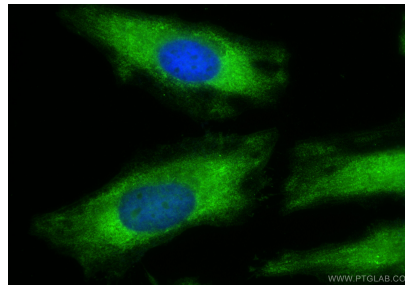
E: [proteintech@ptglab.com](mailto:proteintech@ptglab.com)  
W: [ptglab.com](http://ptglab.com)

**This product is exclusively available under Proteintech Group brand and is not available to purchase from any other manufacturer.**

## Selected Validation Data



human skeletal muscle tissue were subjected to SDS PAGE followed by western blot with 16421-1-AP (ENO3 antibody) at dilution of 1:500 incubated at room temperature for 1.5 hours. This data was developed using the same antibody clone with 16421-1-PBS in a different storage buffer formulation.



Immunofluorescent analysis of (-20°C Ethanol) fixed HeLa cells using ENO3 antibody (16421-1-AP) at dilution of 1:400 and CoraLite® 488-Conjugated Goat Anti-Rabbit IgG(H+L) (SA00013-2). This data was developed using the same antibody clone with 16421-1-PBS in a different storage buffer formulation.