

For Research Use Only

RPL11 Polyclonal antibody

Catalog Number: 16277-1-AP

Featured Product

33 Publications



Basic Information

Catalog Number: 16277-1-AP	GenBank Accession Number: BC018970	Purification Method: Antigen affinity purification
Size: 150ul, Concentration: 600 ug/ml by Nanodrop;	GeneID (NCBI): 6135	Recommended Dilutions: WB 1:500-1:2000 IHC 1:50-1:500 IF/ICC 1:50-1:500
Source: Rabbit	UNIPROT ID: P62913	
Isotype: IgG	Full Name: ribosomal protein L11	
Immunogen Catalog Number: AG9356	Calculated MW: 177 aa, 20 kDa	
	Observed MW: 20 kDa	

Applications

Tested Applications: WB, IHC, IF/ICC, ELISA	Positive Controls: WB : human liver tissue, BxPC-3 cells, mouse lung tissue, mouse pancreas tissue, rat liver tissue IHC : human liver cancer tissue, IF/ICC : BxPC-3 cells,
Cited Applications: WB, IF, IP, ColP	
Species Specificity: human, mouse, rat	
Cited Species: human, mouse	
Note-IHC: suggested antigen retrieval with TE buffer pH 9.0; (*) Alternatively, antigen retrieval may be performed with citrate buffer pH 6.0	

Background Information

Ribosomal protein L11 is one of 80 mammalian ribosome proteins. It can bind to 5S ribosomal RNA, for it's required for rRNA maturation and formation of the 60S ribosomal subunit. It can inhibit 40S or 60S ribosome biogenesis via mediated p53 induction. Once retained by PICT1 in the nucleolus, RPL11 involve in regulation of the MDM2-P53 pathway and promotion of tumor progression.

Notable Publications

Author	Pubmed ID	Journal	Application
Ju-Ha Kim	34638383	Cancers (Basel)	WB
Xuxiu Tao	36156329	Cancer Sci	WB
Koichi Ogami	36288708	Cell Rep	WB

Storage

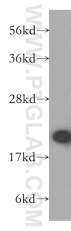
Storage:
Store at -20°C. Stable for one year after shipment.
Storage Buffer:
PBS with 0.02% sodium azide and 50% glycerol, pH7.3
Aliquoting is unnecessary for -20°C storage

*** 20ul sizes contain 0.1% BSA

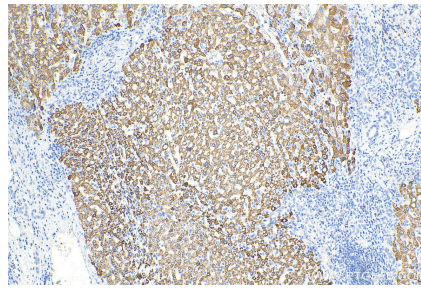
For technical support and original validation data for this product please contact:
T: 1 (888) 4PTGLAB (1-888-478-4522) (toll free in USA), or 1(312) 455-8498 (outside USA)
E: proteintech@ptglab.com
W: ptglab.com

This product is exclusively available under Proteintech Group brand and is not available to purchase from any other manufacturer.

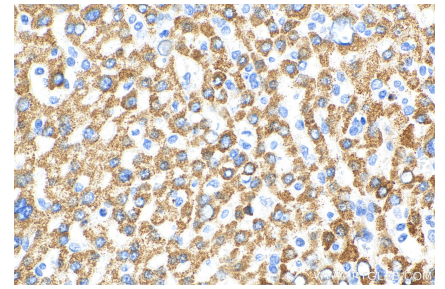
Selected Validation Data



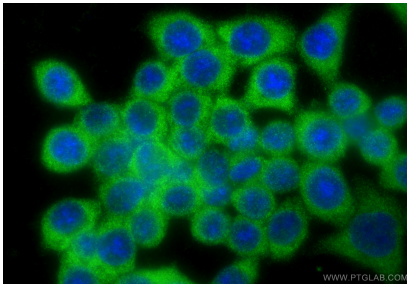
human liver tissue were subjected to SDS PAGE followed by western blot with 16277-1-AP (RPL11 antibody) at dilution of 1:500 incubated at room temperature for 1.5 hours.



Immunohistochemical analysis of paraffin-embedded human liver cancer tissue slide using 16277-1-AP (RPL11 antibody) at dilution of 1:200 (under 10x lens). Heat mediated antigen retrieval with Tris-EDTA buffer (pH 9.0).



Immunohistochemical analysis of paraffin-embedded human liver cancer tissue slide using 16277-1-AP (RPL11 antibody) at dilution of 1:200 (under 40x lens). Heat mediated antigen retrieval with Tris-EDTA buffer (pH 9.0).



Immunofluorescent analysis of (-20°C Ethanol) fixed BxPC-3 cells using RPL11 antibody (16277-1-AP) at dilution of 1:200 and CoraLite®488-Conjugated Goat Anti-Rabbit IgG(H+L) (SA00013-2).