

For Research Use Only

INS Polyclonal antibody

Catalog Number: 15848-1-AP

61 Publications



Basic Information

Catalog Number: 15848-1-AP	GenBank Accession Number: BC005255	Purification Method: Antigen affinity purification
Size: 150ul, Concentration: 500 µg/ml by Nanodrop;	GeneID (NCBI): 3630	Recommended Dilutions: IHC 1:500-1:1000 IF 1:50-1:500
Source: Rabbit	Full Name: INS	
Isotype: IgG	Calculated MW: 110 aa, 12 kDa	
Immunogen Catalog Number: AG8630	Observed MW: 36 kDa	

Applications

Tested Applications: IF, IHC, ELISA	Positive Controls:
Cited Applications: ELISA, IF, IHC	IHC : human pancreas tissue, mouse pancreas tissue, rat pancreas tissue
Species Specificity: human, mouse, rat	IF : human pancreas tissue, mouse pancreas tissue, rat pancreas tissue
Cited Species: human, rat, mouse	
Note-IHC: suggested antigen retrieval with TE buffer pH 9.0; (*) Alternatively, antigen retrieval may be performed with citrate buffer pH 6.0	

Background Information

INS is a peptide hormone, produced by beta cells of the pancreas, and is central to regulating carbohydrate and fat metabolism in the body. It participates in glucose utilization, protein synthesis and in the formation and storage of neutral lipids. INS is synthesized as a precursor molecule, proinsulin, which is processed prior to secretion. A- and B-peptides are joined together by a disulfide bond to form INS, while the central portion of the precursor molecule is cleaved and released as the C-peptide. Defects in INS results in type 1 diabetes mellitus.

Notable Publications

Author	Pubmed ID	Journal	Application
Lilia Maneva-Radicheva	25259810	PLoS One	IHC
Shan-Ying Wu	36109708	Autophagy	IF
Mengqiu Wu	31485878	Apoptosis	IHC

Storage

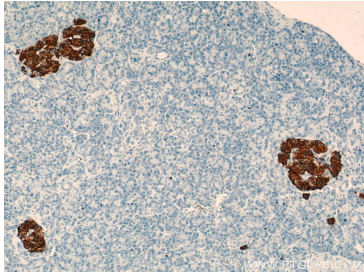
Storage:
Store at -20°C. Stable for one year after shipment.
Storage Buffer:
PBS with 0.02% sodium azide and 50% glycerol pH 7.3.
Aliquoting is unnecessary for -20°C storage

*** 20ul sizes contain 0.1% BSA

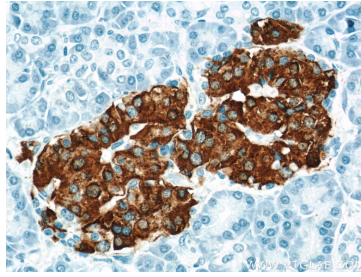
For technical support and original validation data for this product please contact:
T: 1 (888) 4PTGLAB (1-888-478-4522) (toll free in USA), or 1(312) 455-8498 (outside USA)
E: proteintech@ptglab.com
W: ptglab.com

This product is exclusively available under Proteintech Group brand and is not available to purchase from any other manufacturer.

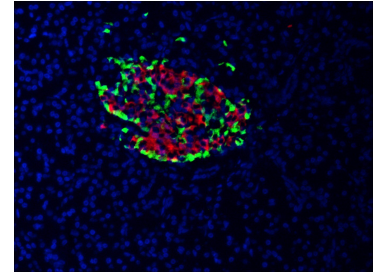
Selected Validation Data



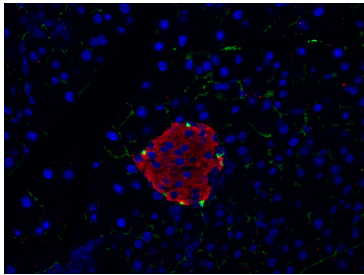
Immunohistochemical analysis of paraffin-embedded human pancreas using 15848-1-AP (INS antibody) at dilution of 1:500 (under 10x lens).



Immunohistochemical analysis of paraffin-embedded human pancreas using 15848-1-AP (INS antibody) at dilution of 1:500 (under 40x lens).



Immunofluorescent analysis of (4% PFA) fixed human pancreas tissue using 15848-1-AP (INS antibody) at dilution of 1:100 and CoraLite594-Conjugated AffiniPure Goat Anti-Rabbit IgG(H+L). The α cells of the islets of Langerhans was labelled in green with 67286-1-Ig (Glucagon antibody).



Immunofluorescent analysis of (4% PFA) fixed mouse pancreas tissue using 15848-1-AP (INS antibody), at dilution of 1:400 and CoraLite®594-Conjugated AffiniPure Goat Anti-Rabbit IgG(H+L). The α cells of the islets of Langerhans was labelled in green with CL488-67286.