

For Research Use Only

# CDC45L Polyclonal antibody

Catalog Number: 15678-1-AP

Featured Product

5 Publications



## Basic Information

**Catalog Number:**

15678-1-AP

**Size:**

150ul, Concentration: 550 ug/ml by Nanodrop and 313 ug/ml by Bradford method using BSA as the standard;

**Source:**

Rabbit

**Isotype:**

IgG

**Immunogen Catalog Number:**

AG8150

**GenBank Accession Number:**

BC010022

**GeneID (NCBI):**

8318

**UNIPROT ID:**

O75419

**Full Name:**

CDC45 cell division cycle 45-like (S. cerevisiae)

**Calculated MW:**

64 kDa

**Observed MW:**

60-66 kDa

**Purification Method:**

Antigen affinity purification

**Recommended Dilutions:**

WB 1:500-1:3000

IP 0.5-4.0 ug for 1.0-3.0 mg of total protein lysate

IHC 1:50-1:500

IF/ICC 1:200-1:800

## Applications

**Tested Applications:**

WB, IHC, IF/ICC, IP, ELISA

**Cited Applications:**

WB, IHC

**Species Specificity:**

human, mouse

**Cited Species:**

human

**Positive Controls:**

WB : K-562 cells, HEK-293 cells, HeLa cells, Jurkat cells, mouse thymus tissue

IP : K-562 cells,

IHC : mouse testis tissue,

IF/ICC : HeLa cells,

**Note-IHC: suggested antigen retrieval with TE buffer pH 9.0; (\*) Alternatively, antigen retrieval may be performed with citrate buffer pH 6.0**

## Background Information

CDC45L (Cell division control protein 45 homolog), plays a role in the initiation of DNA replication, and genetically interacts with MCM family members and with ORC2 and physically form a complex including Mcm5p. It's the first gene missed in DiGeorge syndrome that suggest involve in cell proliferation. This is a rabbit polyclonal antibody raised against part of C-terminus of human CDC45L.

## Notable Publications

Author	Pubmed ID	Journal	Application
Kimberlie A Wittig	34534348	Nucleic Acids Res	WB
Yue Wang	35414135	Signal Transduct Target Ther	WB
Lifei Fan	28467790	Oncotarget	WB

## Storage

**Storage:**

Store at -20°C. Stable for one year after shipment.

**Storage Buffer:**

PBS with 0.02% sodium azide and 50% glycerol pH 7.3.

Aliquoting is unnecessary for -20°C storage

\*\*\* 20ul sizes contain 0.1% BSA

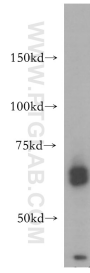
For technical support and original validation data for this product please contact:

T: 1 (888) 4PTGLAB (1-888-478-4522) (toll free in USA), or 1(312) 455-8498 (outside USA)

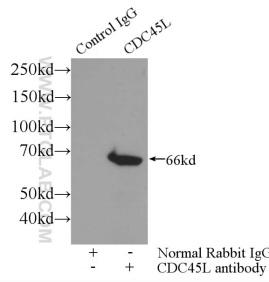
E: proteintech@ptglab.com  
W: ptglab.com

This product is exclusively available under Proteintech Group brand and is not available to purchase from any other manufacturer.

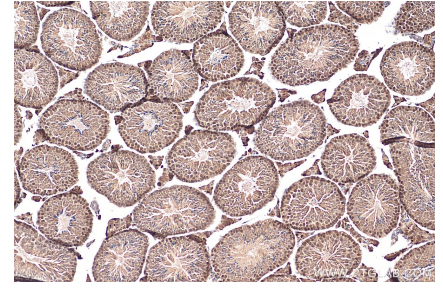
## Selected Validation Data



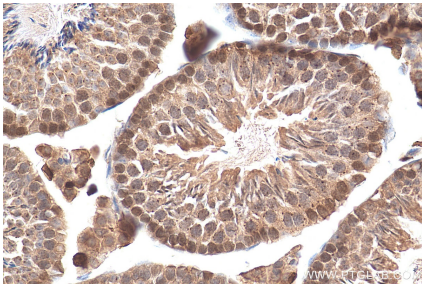
K-562 cells were subjected to SDS PAGE followed by western blot with 15678-1-AP (CDC45L antibody) at dilution of 1:500 incubated at room temperature for 1.5 hours.



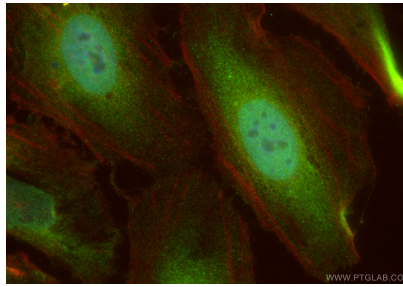
IP result of anti-CDC45L (IP:15678-1-AP, 3ug; Detection:15678-1-AP 1:1000) with K-562 cells lysate 3400ug.



Immunohistochemical analysis of paraffin-embedded mouse testis tissue slide using 15678-1-AP (CDC45L antibody) at dilution of 1:200 (under 10x lens). Heat mediated antigen retrieval with Tris-EDTA buffer (pH 9.0).



Immunohistochemical analysis of paraffin-embedded mouse testis tissue slide using 15678-1-AP (CDC45L antibody) at dilution of 1:200 (under 40x lens). Heat mediated antigen retrieval with Tris-EDTA buffer (pH 9.0).



Immunofluorescent analysis of (4% PFA) fixed HeLa cells using CDC45L antibody (15678-1-AP) at dilution of 1:400 and Coralite@488-Conjugated Goat Anti-Rabbit IgG(H+L) (SA00013-2), CL594-phalloidin (red).