

For Research Use Only

# NR2F6 Polyclonal antibody

Catalog Number: 15399-1-AP



## Basic Information

**Catalog Number:**

15399-1-AP

**Size:**

150ul , Concentration: 550 ug/ml by Nanodrop;

**Source:**

Rabbit

**Isotype:**

IgG

**Immunogen Catalog Number:**

AG7614

**GenBank Accession Number:**

BC002669

**GeneID (NCBI):**

2063

**UNIPROT ID:**

P10588

**Full Name:**

nuclear receptor subfamily 2, group F, member 6

**Calculated MW:**

43 kDa

**Observed MW:**

40-43 kDa

**Purification Method:**

Antigen affinity purification

**Recommended Dilutions:**

WB 1:500-1:3000

## Applications

**Tested Applications:**

WB, ELISA

**Species Specificity:**

human

**Positive Controls:**

WB : HeLa cells, Raji cells, Human placenta tissue

## Background Information

NR2F6 belongs to NR2F subfamily members, which have their roles in the regulation of neurogenesis, organogenesis, and cellular differentiation during embryonic development (PMID:15875024). NR2F6 acts as transcription factor by binding to a TGACCT direct-repeat motif and has been established in controlling facets of central nervous system (CNS)(PMID:12690040). It is a nuclear attenuator that directly interferes with DNA binding of NF-AT and, subsequently, transcriptional activity of the NF-AT-dependent IL-17 expression. Otherwise, NR2F6 negatively interfered with transcriptional cytokine responses and acted as a barrier against autoimmunity (PMID:18701084).

## Storage

**Storage:**

Store at -20°C. Stable for one year after shipment.

**Storage Buffer:**

PBS with 0.02% sodium azide and 50% glycerol pH 7.3.

Aliquoting is unnecessary for -20°C storage

\*\*\* 20ul sizes contain 0.1% BSA

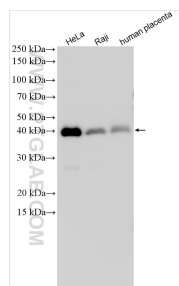
For technical support and original validation data for this product please contact:

T: 1 (888) 4PTGLAB (1-888-478-4522) (toll free in USA), or 1(312) 455-8498 (outside USA)

E: [proteintech@ptglab.com](mailto:proteintech@ptglab.com)  
W: [ptglab.com](http://ptglab.com)

This product is exclusively available under Proteintech Group brand and is not available to purchase from any other manufacturer.

## Selected Validation Data



Various lysates were subjected to SDS PAGE followed by western blot with 15399-1-AP (NR2F6 antibody) at dilution of 1:1500 incubated at room temperature for 1.5 hours.