

For Research Use Only

RBX1 Polyclonal antibody

Catalog Number: 14895-1-AP

14 Publications



Basic Information

Catalog Number:

14895-1-AP

Size:

150ul, Concentration: 400 ug/ml by Nanodrop and 233 ug/ml by Bradford method using BSA as the standard;

Source:

Rabbit

Isotype:

IgG

Immunogen Catalog Number:

AG6685

GenBank Accession Number:

BC001466

GeneID (NCBI):

9978

UNIPROT ID:

P62877

Full Name:

ring-box 1

Calculated MW:

12 kDa

Observed MW:

15 kDa

Purification Method:

Antigen affinity purification

Recommended Dilutions:

WB 1:500-1:1000

IP 0.5-4.0 ug for 1.0-3.0 mg of total protein lysate

IHC 1:50-1:500

Applications

Tested Applications:

WB, IP, IHC, ELISA

Cited Applications:

WB, IF, IP

Species Specificity:

human

Cited Species:

human, mouse, rat, eriocheir sinensis

Note-IHC: suggested antigen retrieval with TE buffer pH 9.0; (*) Alternatively, antigen retrieval may be performed with citrate buffer pH 6.0

Positive Controls:

WB : HeLa cells, Jurkat cells

IP : HeLa cells,

IHC : human heart tissue,

Background Information

RBX1(RING-box protein 1) is also named as RNF75, ROC1 and is a requisite component of the multi- subunit SCF family E3s36-40.It mediates the ubiquitination and subsequent proteasomal degradation of target proteins, including proteins involved in cell cycle progression, signal transduction, transcription and transcription-coupled nucleotide excision repair.

Notable Publications

Author	Pubmed ID	Journal	Application
Chenjia Guo	33227565	Neurobiol Aging	WB
Pingzhao Zhang	34743205	Cell Death Differ	WB
Jia-Shun Zhang	29775751	Gene	WB,IF

Storage

Storage:

Store at -20°C. Stable for one year after shipment.

Storage Buffer:

PBS with 0.02% sodium azide and 50% glycerol pH 7.3.

Aliquoting is unnecessary for -20°C storage

*** 20ul sizes contain 0.1% BSA

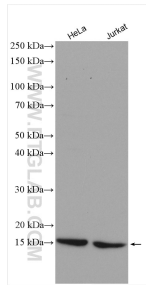
For technical support and original validation data for this product please contact:

T: 1 (888) 4PTGLAB (1-888-478-4522) (toll free in USA), or 1(312) 455-8498 (outside USA)

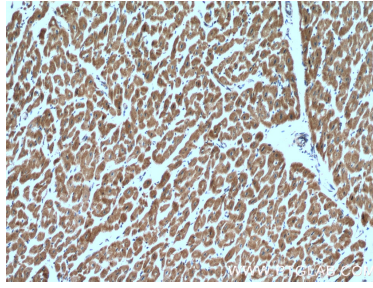
E: proteintech@ptglab.com
W: ptglab.com

This product is exclusively available under Proteintech Group brand and is not available to purchase from any other manufacturer.

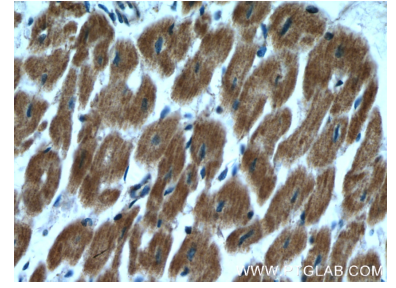
Selected Validation Data



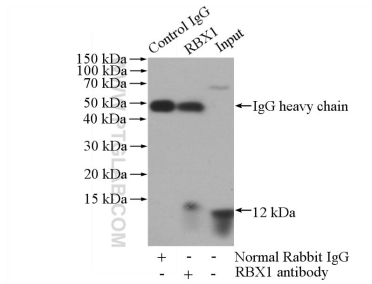
Various lysates were subjected to SDS PAGE followed by western blot with 14895-1-AP (RBX1 antibody) at dilution of 1:600 incubated at room temperature for 1.5 hours.



Immunohistochemical analysis of paraffin-embedded human heart tissue slide using 14895-1-AP (RBX1 antibody) at dilution of 1:200 (under 10x lens).



Immunohistochemical analysis of paraffin-embedded human heart tissue slide using 14895-1-AP (RBX1 antibody) at dilution of 1:200 (under 40x lens).



IP result of anti-RBX1 (IP:14895-1-AP, 4ug;
Detection:14895-1-AP 1:500) with HeLa cells lysate
1520ug.