

For Research Use Only

# KLF6 Polyclonal antibody

Catalog Number:14716-1-AP

Featured Product

18 Publications



## Basic Information

**Catalog Number:**

14716-1-AP

**Size:**

150ul , Concentration: 350 ug/ml by Nanodrop;

**Source:**

Rabbit

**Isotype:**

IgG

**Immunogen Catalog Number:**

AG6440

**GenBank Accession Number:**

BC000311

**GeneID (NCBI):**

1316

**UNIPROT ID:**

Q99612

**Full Name:**

Kruppel-like factor 6

**Calculated MW:**

32 kDa

**Observed MW:**

32-42 kDa

**Purification Method:**

Antigen affinity purification

**Recommended Dilutions:**

WB 1:1000-1:5000

IHC 1:20-1:200

## Applications

**Tested Applications:**

WB, IHC, ELISA

**Cited Applications:**

WB, IHC, IF

**Species Specificity:**

human, mouse, rat

**Cited Species:**

human, mouse, rat

**Note-IHC: suggested antigen retrieval with TE buffer pH 9.0; (\*) Alternatively, antigen retrieval may be performed with citrate buffer pH 6.0**

**Positive Controls:**

WB : HEK-293 cells, mouse thymus tissue, mouse colon tissue, HUVEC cells, NCI-H1299 cells

IHC : human testis tissue,

## Background Information

KLF6(krupple-like factor 6) is a zinc finger transcription factor and tumor suppressor with biological activities and transcriptional targets in growing range. It is highly expressed in placenta followed by spleen, thymus, prostate, testis, small intestine and colon. One key target gene of KLF6 in endoglin, which is a homodimeric cell membrane glycoprotein and TGF- $\beta$  auxiliary receptor, owns a pro-angiogenic role in endothelial cells and is also involved in malignant progression. Also KLF6 induces apoptosis in prostate cancer cells through upregulation of ATF3. KLF6 was normal detected as a 46kDa protein, which is larger than translation product(32kDa), because of post-translational modification including both phosphorylation and glycosylation. This antibody raise against the full length of KLF6 gene of human origin, and can recognize both of KLF6, included KLF6(~32kDa), p-KLF6(~35-46kDa). Otherwise, there may be a non-specific band(50kDa) showed in detection

## Notable Publications

Author	Pubmed ID	Journal	Application
Yue Wang	27690088	Nutrients	WB
Ying Yang	31723124	Cell Death Dis	WB
Liang Cao	35706450	Front Genet	IF

## Storage

**Storage:**

Store at -20°C. Stable for one year after shipment.

**Storage Buffer:**

PBS with 0.02% sodium azide and 50% glycerol pH 7.3.

Aliquoting is unnecessary for -20°C storage

\*\*\* 20ul sizes contain 0.1% BSA

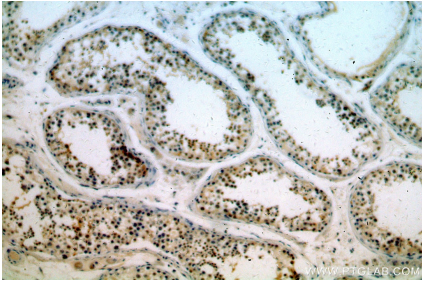
For technical support and original validation data for this product please contact:

T: 1 (888) 4PTGLAB (1-888-478-4522) (toll free in USA), or 1(312) 455-8498 (outside USA)

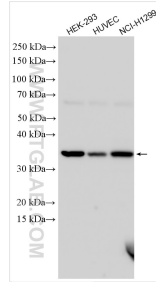
E: proteintech@ptglab.com  
W: ptglab.com

**This product is exclusively available under Proteintech Group brand and is not available to purchase from any other manufacturer.**

## Selected Validation Data



Immunohistochemical analysis of paraffin-embedded human testis using 14716-1-AP (KLF6 antibody) at dilution of 1:200 (under 10x lens).



Various lysates were subjected to SDS PAGE followed by western blot with 14716-1-AP (KLF6 antibody) at dilution of 1:2500 incubated at room temperature for 1.5 hours.