

For Research Use Only

# KCNAB1 Polyclonal antibody, PBS Only

Catalog Number: 14697-1-PBS



## Basic Information

Catalog Number:

14697-1-PBS

Size:

100ug, Concentration: 1 mg/ml by Nanodrop;

Source:

Rabbit

Isotype:

IgG

Immunogen Catalog Number:

AG6339

GenBank Accession Number:

BC043166

GeneID (NCBI):

7881

UNIPROT ID:

Q14722

Full Name:

potassium voltage-gated channel, shaker-related subfamily, beta member 1

Calculated MW:

47 kDa

Observed MW:

68 kDa

Purification Method:

Antigen affinity purification

## Applications

Tested Applications:

WB, IHC, IF/ICC, Indirect ELISA

Species Specificity:

human, mouse, rat

## Storage

Storage:

Store at -80°C.

Storage Buffer:

PBS Only

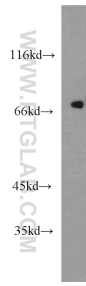
For technical support and original validation data for this product please contact:

T: 1 (888) 4PTGLAB (1-888-478-4522) (toll free in USA), or 1(312) 455-8498 (outside USA)

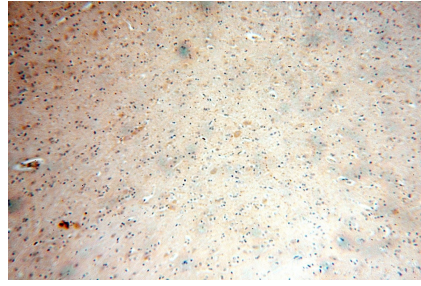
E: [proteintech@ptglab.com](mailto:proteintech@ptglab.com)  
W: [ptglab.com](http://ptglab.com)

This product is exclusively available under Proteintech Group brand and is not available to purchase from any other manufacturer.

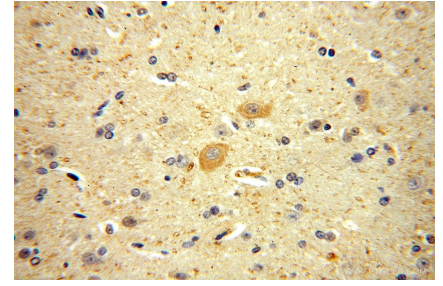
## Selected Validation Data



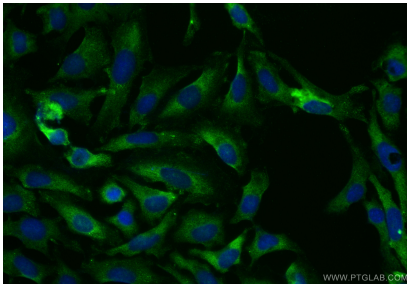
mouse heart tissue were subjected to SDS PAGE followed by western blot with 14697-1-AP (KCNA1 antibody) at dilution of 1:1500 incubated at room temperature for 1.5 hours. This data was developed using the same antibody clone with 14697-1-PBS in a different storage buffer formulation.



Immunohistochemical analysis of paraffin-embedded human brain using 14697-1-AP (KCNA1 antibody) at dilution of 1:100 (under 10x lens). This data was developed using the same antibody clone with 14697-1-PBS in a different storage buffer formulation.



Immunohistochemical analysis of paraffin-embedded human brain using 14697-1-AP (KCNA1 antibody) at dilution of 1:100 (under 40x lens). This data was developed using the same antibody clone with 14697-1-PBS in a different storage buffer formulation.



Immunofluorescent analysis of (-20°C Ethanol) fixed HeLa cells using KCNA1 antibody (14697-1-AP) at dilution of 1:200 and CoraLite® 488-Conjugated Goat Anti-Rabbit IgG(H+L) (SA00013-2). This data was developed using the same antibody clone with 14697-1-PBS in a different storage buffer formulation.