

For Research Use Only

KIF17 Polyclonal antibody

Catalog Number: 14615-1-AP **2 Publications**



Basic Information

Catalog Number: 14615-1-AP	GenBank Accession Number: BC065927	Purification Method: Antigen affinity purification
Size: 150ul , Concentration: 550 µg/ml by Nanodrop and 333 µg/ml by Bradford method using BSA as the standard;	GeneID (NCBI): 57576	Recommended Dilutions: IP 0.5-4.0 ug for IP and 1:500-1:2000 for WB
Source: Rabbit	Full Name: kinesin family member 17	IHC 1:50-1:500
Isotype: IgG	Calculated MW: 115 kDa	IF 1:20-1:200
Immunogen Catalog Number: AG6217	Observed MW: 170 kDa	

Applications

Tested Applications: IF, IHC, IP, ELISA	Positive Controls:
Cited Applications: IF, IP, WB	IP: mouse brain tissue,
Species Specificity: human, mouse, rat, monkey	IHC: human gliomas tissue, human brain tissue, mouse brain tissue
Cited Species: human, mouse	IF: COS-7 cells,
Note-IHC: suggested antigen retrieval with TE buffer pH 9.0; (*) Alternatively, antigen retrieval may be performed with citrate buffer pH 6.0	

Background Information

Notable Publications

Author	Pubmed ID	Journal	Application
Yan Liu	35678994	Neurosci Bull	WB,IF,IP
Jie Ran	32275885	Dev Cell	WB

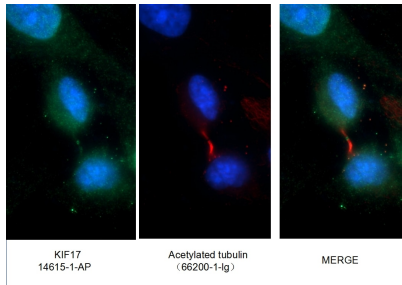
Storage

Storage:
Store at -20°C. Stable for one year after shipment.
Storage Buffer:
PBS with 0.02% sodium azide and 50% glycerol pH 7.3.
Aliquoting is unnecessary for -20°C storage

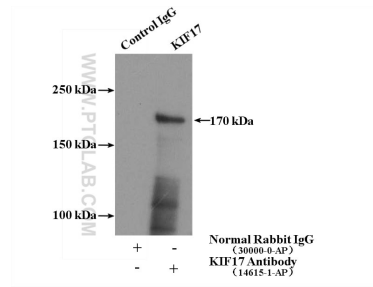
For technical support and original validation data for this product please contact:
T: 1 (888) 4PTGLAB (1-888-478-4522) (toll free in USA), or 1(312) 455-8498 (outside USA) E: proteintech@ptglab.com
W: ptglab.com

This product is exclusively available under Proteintech Group brand and is not available to purchase from any other manufacturer.

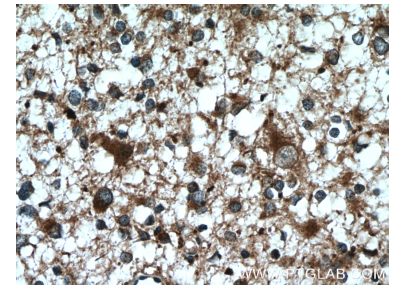
Selected Validation Data



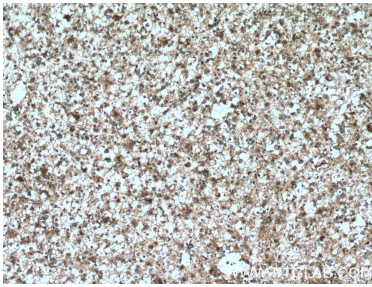
Immunofluorescent analysis of (-20°C Ethanol) fixed COS-7 cells using 14615-1-AP (KIF17 antibody) at dilution of 1:50 and Alexa Fluor 488-conjugated AffiniPure Goat Anti-Rabbit IgG(H+L).



IP Result of anti-KIF17 (IP:14615-1-AP, 4ug; Detection:14615-1-AP 1:1000) with mouse brain tissue lysate 4000ug.



Immunohistochemical analysis of paraffin-embedded human gliomas tissue slide using 14615-1-AP (KIF17 antibody) at dilution of 1:200 (under 40x lens. Heat mediated antigen retrieval with Tris-EDTA buffer (pH 9.0).



Immunohistochemical analysis of paraffin-embedded human gliomas tissue slide using 14615-1-AP (KIF17 antibody) at dilution of 1:200 (under 10x lens. Heat mediated antigen retrieval with Tris-EDTA buffer (pH 9.0).