

For Research Use Only

UBC12 Polyclonal antibody

Catalog Number: 14520-1-AP

Featured Product

6 Publications



Basic Information

Catalog Number:

14520-1-AP

Size:

150ul, Concentration: 900 µg/ml by Nanodrop and 360 µg/ml by Bradford method using BSA as the standard;

Source:

Rabbit

Isotype:

IgG

Immunogen Catalog Number:

AG5984

GenBank Accession Number:

BC058924

GeneID (NCBI):

9040

Full Name:

ubiquitin-conjugating enzyme E2M (UBC12 homolog, yeast)

Calculated MW:

21 kDa

Observed MW:

21 kDa

Purification Method:

Antigen affinity purification

Recommended Dilutions:

WB 1:500-1:2000

IP 0.5-4.0 µg for IP and 1:500-1:1000

for WB

IHC 1:50-1:500

IF 1:20-1:200

Applications

Tested Applications:

IF, IHC, IP, WB, ELISA

Cited Applications:

IF, IHC, WB

Species Specificity:

human, mouse, rat

Cited Species:

human

Note-IHC: suggested antigen retrieval with TE buffer pH 9.0; (*) Alternatively, antigen retrieval may be performed with citrate buffer pH 6.0

Positive Controls:

WB : HEK-293T cells, L02 cells, SMMC-7721 cells, HEK-293 cells, Ramos cells

IP : L02 cells,

IHC : mouse ovary tissue,

IF : L02 cells,

Background Information

Notable Publications

Author	Pubmed ID	Journal	Application
Haibin Zhou	29074978	Nat Commun	WB,IF
Maria Fomicheva	33185187	Elife	WB
Wenjuan Zhou	35544948	Biochem Cell Biol	WB

Storage

Storage:

Store at -20°C. Stable for one year after shipment.

Storage Buffer:

PBS with 0.02% sodium azide and 50% glycerol pH 7.3.

Aliquoting is unnecessary for -20°C storage

*** 20ul sizes contain 0.1% BSA

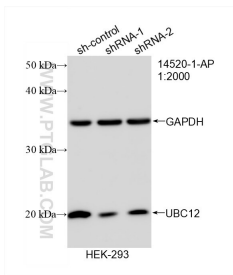
For technical support and original validation data for this product please contact:

T: 1 (888) 4PTGLAB (1-888-478-4522) (toll free in USA), or 1(312) 455-8498 (outside USA)

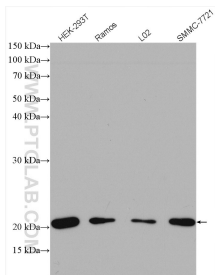
E: proteintech@ptglab.com
W: ptglab.com

This product is exclusively available under Proteintech Group brand and is not available to purchase from any other manufacturer.

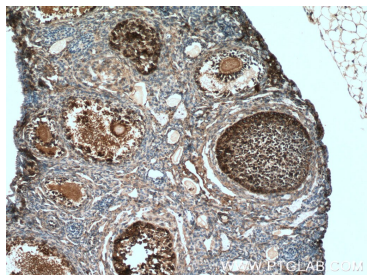
Selected Validation Data



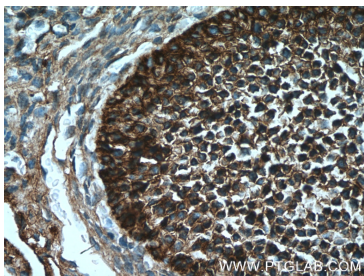
WB result of UBC 12 antibody (14520-1-AP; 1:2000; incubated at room temperature for 1.5 hours) with sh-Control and sh-UBC12 transfected HEK-293 cells.



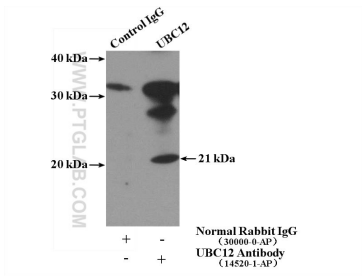
Various lysates were subjected to SDS PAGE followed by western blot with 14520-1-AP (UBC 12 antibody) at dilution of 1:1000 incubated at room temperature for 1.5 hours.



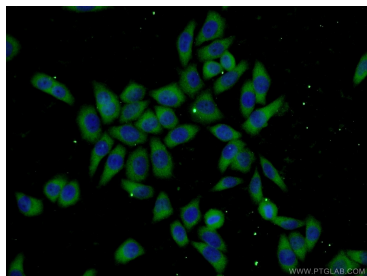
Immunohistochemical analysis of paraffin-embedded mouse ovary tissue slide using 14520-1-AP (UBC12 antibody) at dilution of 1:200 (under 10x lens). Heat mediated antigen retrieval with Tris-EDTA buffer (pH 9.0).



Immunohistochemical analysis of paraffin-embedded mouse ovary tissue slide using 14520-1-AP (UBC12 antibody) at dilution of 1:200 (under 40x lens). Heat mediated antigen retrieval with Tris-EDTA buffer (pH 9.0).



IP Result of anti-UBC12 (IP:14520-1-AP, 4ug; Detection:14520-1-AP 1:600) with L02 cells lysate 1800ug.



Immunofluorescent analysis of L02 cells using 14520-1-AP (UBC12 antibody) at dilution of 1:50 and Alexa Fluor 488-conjugated AffiniPure Goat Anti-Rabbit IgG(H+L).