

For Research Use Only

CEP250/CNAP1 Polyclonal antibody



Catalog Number: 14498-1-AP

34 Publications

Basic Information

Catalog Number: 14498-1-AP	GenBank Accession Number: BC001433	Purification Method: Antigen affinity purification
Size: 150ul , Concentration: 800 µg/ml by Nanodrop and 460 µg/ml by Bradford method using BSA as the standard;	GeneID (NCBI): 11190	Recommended Dilutions: WB 1:500-1:1000 IP 0.5-4.0 ug for 1.0-3.0 mg of total protein lysate IHC 1:50-1:500 IF 1:50-1:500
Source: Rabbit	Full Name: centrosomal protein 250kDa	
Isotype: IgG	Calculated MW: 281 kDa	
Immunogen Catalog Number: AG5925	Observed MW: 250 kDa	

Applications

Tested Applications: IF, IHC, IP, WB, ELISA	Positive Controls: WB : HeLa cells, IP : HeLa cells, IHC : human placenta tissue, IF : hTERT-RPE1 cells, HeLa cells
Cited Applications: IF, IHC, WB	
Species Specificity: human	
Cited Species: human, mouse	
Note-IHC: suggested antigen retrieval with TE buffer pH 9.0; (*) Alternatively, antigen retrieval may be performed with citrate buffer pH 6.0	

Background Information

CEP250, also known as C-Nap1, is a 250 kDa coiled-coil protein that localizes to the proximal ends of mother and daughter centrioles. It is required for centriole-centriole cohesion during interphase of the cell cycle. It dissociates from the centrosomes when parental centrioles separate at the beginning of mitosis. The protein associates with and is phosphorylated by NIMA-related kinase 2, which is also associated with the centrosome.

Notable Publications

Author	Pubmed ID	Journal	Application
Yuki Yoshino	32788231	J Cell Sci	IF
Robert Mahen	36282799	PLoS Biol	IF
Tianyu Wu	36395215	Science	IF

Storage

Storage:
Store at -20°C. Stable for one year after shipment.
Storage Buffer:
PBS with 0.02% sodium azide and 50% glycerol pH 7.3.
Aliquoting is unnecessary for -20°C storage

*** 20ul sizes contain 0.1% BSA

For technical support and original validation data for this product please contact:

T: 1 (888) 4PTGLAB (1-888-478-4522) (toll free in USA), or 1(312) 455-8498 (outside USA)

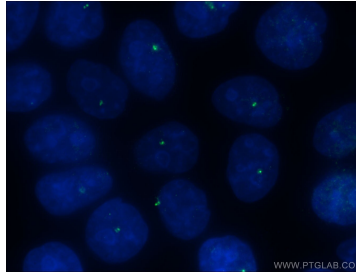
E: proteintech@ptglab.com
W: ptglab.com

This product is exclusively available under Proteintech Group brand and is not available to purchase from any other manufacturer.

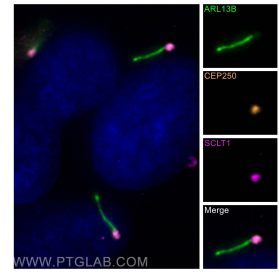
Selected Validation Data



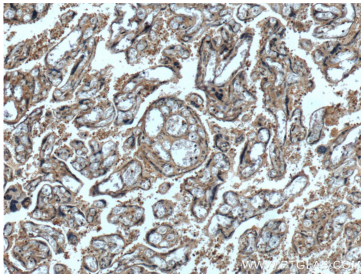
HeLa cells were subjected to SDS PAGE followed by western blot with 14498-1-AP (CEP250/CNAP1 antibody) at dilution of 1:500 incubated at room temperature for 1.5 hours.



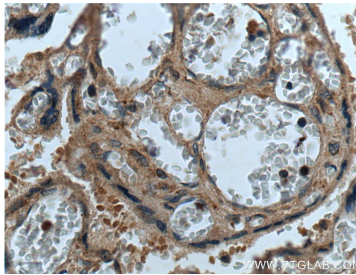
Immunofluorescent analysis of (-20°C Ethanol) fixed HeLa cells using 14498-1-AP (CEP250/CNAP1 antibody) at dilution of 1:50 and Alexa Fluor 488-conjugated AffiniPure Goat Anti-Rabbit IgG(H+L).



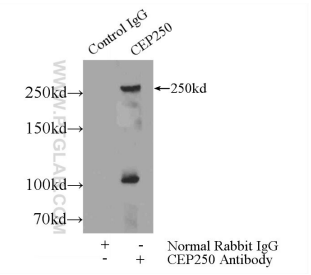
Immunofluorescent analysis of (-20°C Methanol) fixed hTERT-RPE1 cells using CEP250/CNAP1 antibody (14498-1-AP) at dilution of 1:100 and Cy3-conjugated AffiniPure Goat Anti-Rabbit IgG(H+L), SCLT1 antibody (14875-1-AP, Magenta), CoraLite@488 ARL13B antibody (CL488-17711, green).



Immunohistochemical analysis of paraffin-embedded human placenta tissue slide using 14498-1-AP (CEP250/CNAP1 antibody) at dilution of 1:200 (under 10x lens).



Immunohistochemical analysis of paraffin-embedded human placenta tissue slide using 14498-1-AP (CEP250/CNAP1 antibody) at dilution of 1:200 (under 40x lens).



IP Result of anti-CEP250/CNAP1 (IP:14498-1-AP, 5ug; Detection:14498-1-AP 1:500) with HeLa cells lysate 1200ug.