

For Research Use Only

GLUD2 Polyclonal antibody

Catalog Number: 14462-1-AP

Featured Product

3 Publications



Basic Information

Catalog Number: 14462-1-AP	GenBank Accession Number: BC050732	Purification Method: Antigen affinity purification
Size: 150ul, Concentration: 650 µg/ml by Nanodrop;	GeneID (NCBI): 2747	Recommended Dilutions: WB 1:1000-1:8000 IHC 1:20-1:200 IF 1:20-1:200
Source: Rabbit	Full Name: glutamate dehydrogenase 2	
Isotype: IgG	Calculated MW: 61 kDa	
Immunogen Catalog Number: AG5748	Observed MW: 50-60 kDa	

Applications

Tested Applications: IF, IHC, WB, ELISA	Positive Controls:
Cited Applications: IHC, WB	WB: mouse eye tissue, HepG2 cells, rat testis tissue
Species Specificity: human, mouse, rat	IHC: human prostate cancer tissue,
Cited Species: human	IF: HepG2 cells,
Note-IHC: suggested antigen retrieval with TE buffer pH 9.0; (*) Alternatively, antigen retrieval may be performed with citrate buffer pH 6.0	

Background Information

Notable Publications

Author	Pubmed ID	Journal	Application
Chunhong Cui	34283311	Amino Acids	WB
Xuyong Wei	35430532	Transl Oncol	IHC
Pei Wang	37872351	Nat Metab	WB

Storage

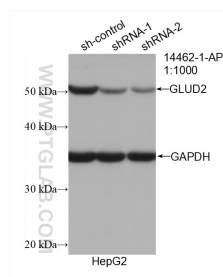
Storage:
Store at -20°C. Stable for one year after shipment.
Storage Buffer:
PBS with 0.02% sodium azide and 50% glycerol pH 7.3.
Aliquoting is unnecessary for -20°C storage

*** 20ul sizes contain 0.1% BSA

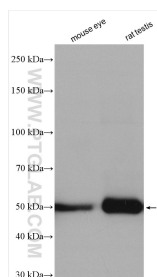
For technical support and original validation data for this product please contact:
T: 1 (888) 4PTGLAB (1-888-478-4522) (toll free in USA), or 1(312) 455-8498 (outside USA)
E: proteintech@ptglab.com
W: ptglab.com

This product is exclusively available under Proteintech Group brand and is not available to purchase from any other manufacturer.

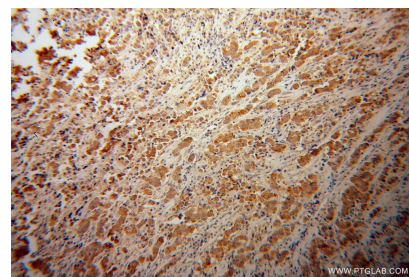
Selected Validation Data



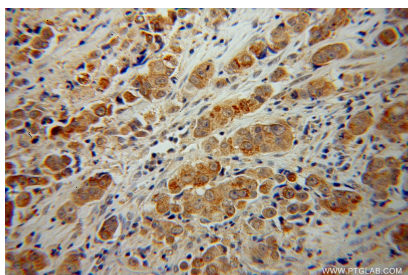
WB result of GLUD2 antibody (14462-1-AP; 1:1000; incubated at room temperature for 1.5 hours) with sh-Control and sh-GLUD2 transfected HepG2 cells.



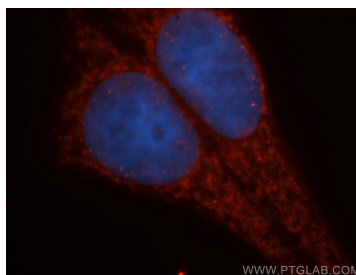
Various lysates were subjected to SDS PAGE followed by western blot with 14462-1-AP (GLUD2 antibody) at dilution of 1:4000 incubated at room temperature for 1.5 hours.



Immunohistochemical analysis of paraffin-embedded human prostate cancer using 14462-1-AP (GLUD2 antibody) at dilution of 1:100 (under 10x lens).



Immunohistochemical analysis of paraffin-embedded human prostate cancer using 14462-1-AP (GLUD2 antibody) at dilution of 1:100 (under 40x lens).



Immunofluorescent analysis of HepG2 cells, using GLUD2 antibody 14462-1-AP at 1:50 dilution and Rhodamine-labeled goat anti-rabbit IgG (red). Blue pseudocolor = DAPI (fluorescent DNA dye).