

For Research Use Only

KIF3C Polyclonal antibody

Catalog Number: 14333-1-AP **5 Publications**



Basic Information

Catalog Number: 14333-1-AP	GenBank Accession Number: BC042486	Purification Method: Antigen affinity purification
Size: 150ul , Concentration: 350 ug/ml by Nanodrop and 227 ug/ml by Bradford method using BSA as the standard;	GeneID (NCBI): 3797	Recommended Dilutions: WB 1:500-1:3000 IP 0.5-4.0 ug for 1.0-3.0 mg of total protein lysate IHC 1:50-1:500 IF/ICC 1:50-1:500
Source: Rabbit	UNIPROT ID: O14782	
Isotype: IgG	Full Name: kinesin family member 3C	
Immunogen Catalog Number: AG5619	Calculated MW: 89 kDa	
	Observed MW: 100 kDa	

Applications

Tested Applications: WB, IHC, IF/ICC, IP, ELISA	Positive Controls: WB : Y79 cells, HeLa cells, mouse brain tissue IP : mouse brain tissue, IHC : human gliomas tissue, IF/ICC : SH-SY5Y cells,
Cited Applications: WB, IHC	
Species Specificity: human, mouse, rat	
Cited Species: human, mouse	
Note-IHC: suggested antigen retrieval with TE buffer pH 9.0; (*) Alternatively, antigen retrieval may be performed with citrate buffer pH 6.0	

Notable Publications

Author	Pubmed ID	Journal	Application
Honggui Ma	34537760	Aging (Albany NY)	IHC
Yang Gao	33150178	Biomed Res Int	WB
Jasbir Singh Dalal	34259631	Elife	WB

Storage

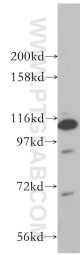
Storage:
Store at -20°C. Stable for one year after shipment.
Storage Buffer:
PBS with 0.02% sodium azide and 50% glycerol pH 7.3.
Aliquoting is unnecessary for -20°C storage

*** 20ul sizes contain 0.1% BSA

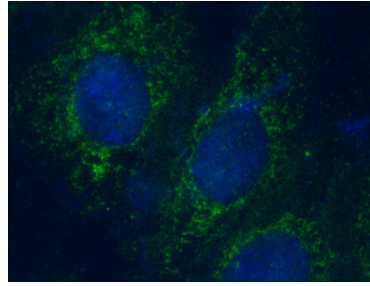
For technical support and original validation data for this product please contact:
T: 1 (888) 4PTGLAB (1-888-478-4522) (toll free in USA), or 1(312) 455-8498 (outside USA)
E: proteintech@ptglab.com
W: ptglab.com

This product is exclusively available under Proteintech Group brand and is not available to purchase from any other manufacturer.

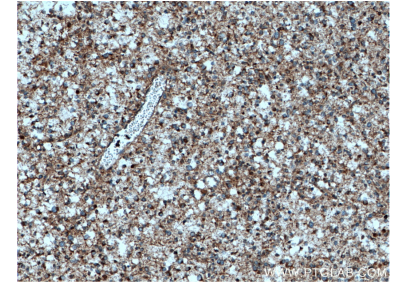
Selected Validation Data



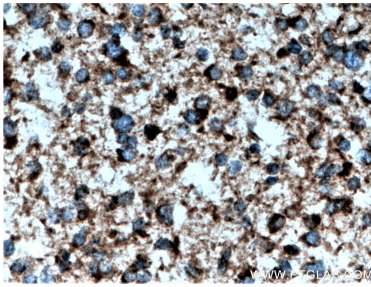
Y79 cells were subjected to SDS PAGE followed by western blot with 14333-1-AP (KIF3C antibody) at dilution of 1:800 incubated at room temperature for 1.5 hours.



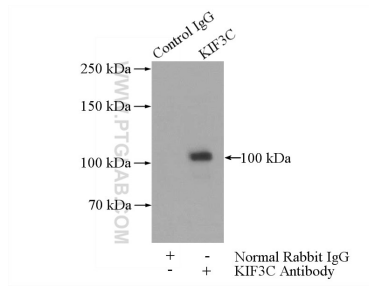
Immunofluorescent analysis of (4% PFA) fixed SH-SY5Y cells using 14333-1-AP (KIF3C antibody) at dilution of 1:100 and CoraLite488-Conjugated Goat Anti-Rabbit IgG(H+L).



Immunohistochemical analysis of paraffin-embedded human gliomas tissue slide using 14333-1-AP (KIF3C antibody) at dilution of 1:200 (under 10x lens. Heat mediated antigen retrieval with Tris-EDTA buffer (pH 9.0).



Immunohistochemical analysis of paraffin-embedded human gliomas tissue slide using 14333-1-AP (KIF3C antibody) at dilution of 1:200 (under 40x lens. Heat mediated antigen retrieval with Tris-EDTA buffer (pH 9.0).



IP result of anti-KIF3C (IP:14333-1-AP, 4ug; Detection:14333-1-AP 1:500) with mouse brain tissue lysate 3440ug.