

For Research Use Only

ABT1 Polyclonal antibody, PBS Only

Catalog Number: 14148-1-PBS



Basic Information

| | | |
|--|---|--|
| Catalog Number: 14148-1-PBS | GenBank Accession Number: BC066313 | Purification Method: Antigen affinity purification |
| Size: 100ug, Concentration: 1 mg/ml by Nanodrop; | GeneID (NCBI): 29777 | |
| Source: Rabbit | UNIPROT ID: Q9ULW3 | |
| Isotype: IgG | Full Name: activator of basal transcription 1 | |
| Immunogen Catalog Number: AG5317 | Calculated MW: 31 kDa | |
| | Observed MW: 31-32 kDa | |

Applications

Tested Applications:
WB, IHC, IF/ICC, Indirect ELISA

Species Specificity:
human, mouse, rat

Storage

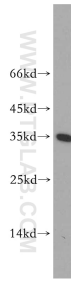
Storage:
Store at -80°C.

Storage Buffer:
PBS Only

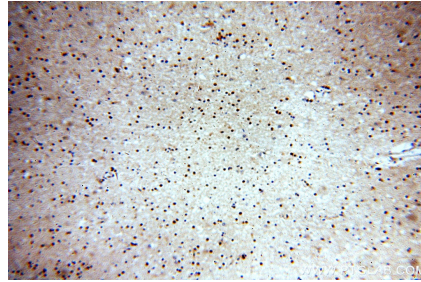
For technical support and original validation data for this product please contact:
T: 1 (888) 4PTGLAB (1-888-478-4522) (toll free in USA), or 1(312) 455-8498 (outside USA) E: proteintech@ptglab.com
W: ptglab.com

This product is exclusively available under Proteintech Group brand and is not available to purchase from any other manufacturer.

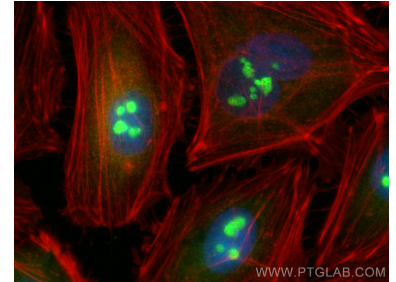
Selected Validation Data



mouse liver tissue were subjected to SDS PAGE followed by western blot with 14148-1-AP (ABT1 antibody) at dilution of 1:300 incubated at room temperature for 1.5 hours. This data was developed using the same antibody clone with 14148-1-PBS in a different storage buffer formulation.



Immunohistochemical analysis of paraffin-embedded human brain using 14148-1-AP (ABT1 antibody) at dilution of 1:100 (under 10x lens). This data was developed using the same antibody clone with 14148-1-PBS in a different storage buffer formulation.



Immunofluorescent analysis of (4% PFA) fixed HeLa cells using ABT1 antibody (14148-1-AP) at dilution of 1:400 and CoraLite®488-Conjugated Goat Anti-Rabbit IgG(H+L) (SA00013-2), CL594-phalloidin (red). This data was developed using the same antibody clone with 14148-1-PBS in a different storage buffer formulation.