

For Research Use Only

RPS3A Polyclonal antibody

Catalog Number: 14123-1-AP

Featured Product

8 Publications



Basic Information

Catalog Number:

14123-1-AP

Size:

150ul, Concentration: 350 ug/ml by Nanodrop and 267 ug/ml by Bradford method using BSA as the standard;

Source:

Rabbit

Isotype:

IgG

Immunogen Catalog Number:

AG5273

GenBank Accession Number:

BC066926

GeneID (NCBI):

6189

UNIPROT ID:

P61247

Full Name:

ribosomal protein S3A

Calculated MW:

30 kDa

Observed MW:

35 kDa

Purification Method:

Antigen affinity purification

Recommended Dilutions:

WB 1:1000-1:8000

IP 0.5-4.0 ug for 1.0-3.0 mg of total protein lysate

IHC 1:400-1:1600

Applications

Tested Applications:

WB, IHC, FC (Intra), IP, ELISA

Cited Applications:

WB, IHC, IF

Species Specificity:

human, mouse, rat

Cited Species:

human, mouse, xenopus

Note-IHC: suggested antigen retrieval with TE buffer pH 9.0; (*) Alternatively, antigen retrieval may be performed with citrate buffer pH 6.0

Positive Controls:

WB: HeLa cells, A431 cells, Jurkat cells, A549 cells, HepG2 cells, Raji cells

IP: HeLa cells,

IHC: human colon tissue,

Background Information

RPS3a, a component of the ribosomal small subunit (40S), is a member of the A20 family of the deubiquitinating cysteine proteases. RPS3a is an inducing factor for oncogenic cellular transformation of Rat-1 cells by v-fos, and is highly expressed in most tumors including hepatocellular carcinoma and other cancers. On the other hand, RPS3a has also been described as a regulator of apoptosis and transcription factors

Notable Publications

Author	Pubmed ID	Journal	Application
Sipeng Li	34265469	Mol Cell Proteomics	WB
Jean-Michel Cioni	30612743	Cell	IF
Yan Tang	30131868	Cell Discov	WB,IHC,IF

Storage

Storage:

Store at -20°C. Stable for one year after shipment.

Storage Buffer:

PBS with 0.02% sodium azide and 50% glycerol pH 7.3.

Aliquoting is unnecessary for -20°C storage

*** 20ul sizes contain 0.1% BSA

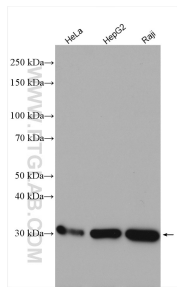
For technical support and original validation data for this product please contact:

T: 1 (888) 4PTGLAB (1-888-478-4522) (toll free in USA), or 1(312) 455-8498 (outside USA)

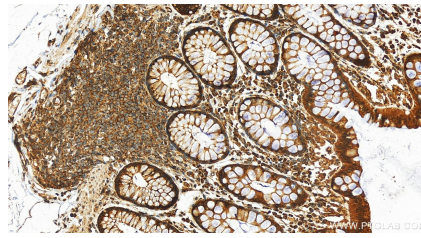
E: proteintech@ptglab.com
W: ptglab.com

This product is exclusively available under Proteintech Group brand and is not available to purchase from any other manufacturer.

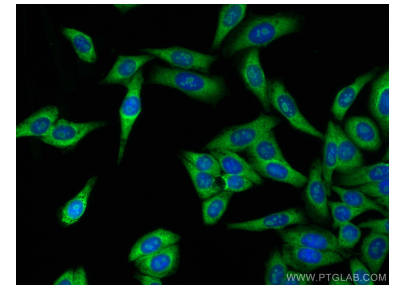
Selected Validation Data



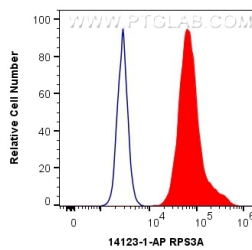
Various lysates were subjected to SDS PAGE followed by western blot with 14123-1-AP (RPS3A antibody) at dilution of 1:4000 incubated at room temperature for 1.5 hours.



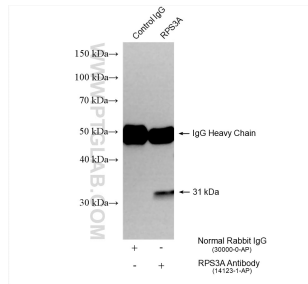
Immunohistochemical analysis of paraffin-embedded human colon tissue slide using 14123-1-AP (RPS3A antibody) at dilution of 1:800 (under 20x lens). Heat mediated antigen retrieval with Tris-EDTA buffer (pH 9.0).



Immunofluorescent analysis of (4% PFA) fixed HepG2 cells using RPS3A antibody (14123-1-AP) at dilution of 1:200 and CoraLite®488-Conjugated AffiniPure Goat Anti-Rabbit IgG(H+L).



1X10⁶ HepG2 cells were intracellularly stained with 0.5 ug Anti-Human RPS3A (14123-1-AP) and CoraLite®488-Conjugated AffiniPure Goat Anti-Rabbit IgG(H+L) at dilution 1:1000 (red), or 0.5 ug Control Antibody. Cells were fixed with 4% PFA and permeabilized with Flow Cytometry Perm Buffer (PF00011-C).



IP result of anti-RPS3A (IP:14123-1-AP, 4ug; Detection:14123-1-AP 1:6000) with HeLa cells lysate 1600 ug.