

For Research Use Only

ESR2 Polyclonal antibody

Catalog Number:14007-1-AP

Featured Product

67 Publications



Basic Information

Catalog Number: 14007-1-AP	GenBank Accession Number: BC024181	Purification Method: Antigen affinity purification
Size: 150ul , Concentration: 450 ug/ml by Nanodrop;	GeneID (NCBI): 2100	Recommended Dilutions: WB 1:1000-1:6000 IHC 1:50-1:500
Source: Rabbit	UNIPROT ID: Q92731	
Isotype: IgG	Full Name: estrogen receptor 2 (ER beta)	
Immunogen Catalog Number: AG5103	Calculated MW: 59 kDa	
	Observed MW: 50-60 kDa	

Applications

Tested Applications: WB, IHC, ELISA	Positive Controls: WB : MCF-7 cells, SKOV-3 cells, mouse testis tissue, mouse brain tissue, PC-3 cells, SH-SY5Y cells, NIH/3T3 cells IHC : mouse ovary tissue,
Cited Applications: WB, IHC, IF	
Species Specificity: human, mouse	
Cited Species: human, mouse, rat	

Note-IHC: suggested antigen retrieval with TE buffer pH 9.0; (*) Alternatively, antigen retrieval may be performed with citrate buffer pH 6.0

Background Information

Estrogen receptor-beta (ESR2) is a member of the superfamily of nuclear receptors, which can transduce extracellular signals into transcriptional responses. It binds estrogens with an affinity similar to that of ESR1, and activates expression of reporter genes containing estrogen response elements (ERE) in an estrogen-dependent manner. DNA-binding by ESR1 and ESR2 is rapidly lost at 37 degrees Celsius in the absence of ligand while in the presence of 17 beta-estradiol and 4-hydroxy-tamoxifen loss in DNA-binding at elevated temperature is more gradual. ESR2 exists various isoforms and range of calculated molecular weight of isoforms is 50-60 kDa. The experiment detected two bands for ESR2 in isolated human germ cells, one at 60 kDa and a weaker one at 50 kDa(PMID:14766008).

Notable Publications

Author	Pubmed ID	Journal	Application
Stephanie D Ploskonka	26419697	Dev Psychobiol	IHC
Hao Li	36123318	Phytother Res	WB
Hang Li	32943060	Cell Commun Signal	WB

Storage

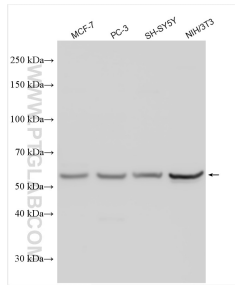
Storage:
Store at -20°C. Stable for one year after shipment.
Storage Buffer:
PBS with 0.02% sodium azide and 50% glycerol, pH7.3
Aliquoting is unnecessary for -20°C storage

*** 20ul sizes contain 0.1% BSA

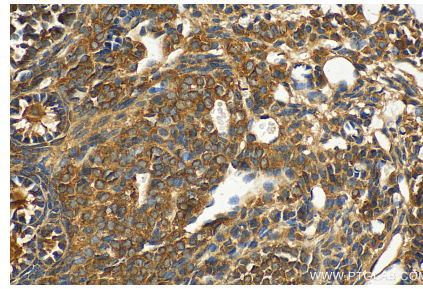
For technical support and original validation data for this product please contact:
T: 1 (888) 4PTGLAB (1-888-478-4522) (toll free in USA), or 1(312) 455-8498 (outside USA)
E: proteintech@ptglab.com
W: ptglab.com

This product is exclusively available under Proteintech Group brand and is not available to purchase from any other manufacturer.

Selected Validation Data



Various lysates were subjected to SDS PAGE followed by western blot with 14007-1-AP (ESR2 antibody) at dilution of 1:3000 incubated at room temperature for 1.5 hours.



Immunohistochemical analysis of paraffin-embedded mouse ovary tissue slide using 14007-1-AP (ESR2 antibody) at dilution of 1:200 (under 40x lens). Heat mediated antigen retrieval with Tris-EDTA buffer (pH 9.0).