

For Research Use Only

ALS2 Polyclonal antibody

Catalog Number: 13998-1-AP



Basic Information

Catalog Number:

13998-1-AP

Size:

150ul, Concentration: 600 µg/ml by Nanodrop and 200 µg/ml by Bradford method using BSA as the standard;

Source:

Rabbit

Isotype:

IgG

Immunogen Catalog Number:

AG5087

GenBank Accession Number:

BC029174

GeneID (NCBI):

57679

Full Name:

amyotrophic lateral sclerosis 2 (juvenile)

Calculated MW:

1657 aa, 184 kDa

Observed MW:

185 kDa

Purification Method:

Antigen affinity purification

Recommended Dilutions:

WB 1:500-1:1000

IP 0.5-4.0 µg for IP and 1:200-1:1000

for WB

IHC 1:20-1:200

IF 1:20-1:200

Applications

Tested Applications:

IF, IHC, IP, WB, ELISA

Species Specificity:

human, mouse, rat

Note-IHC: suggested antigen retrieval with TE buffer pH 9.0; (*) Alternatively, antigen retrieval may be performed with citrate buffer pH 6.0

Positive Controls:

WB : HEK-293 cells,

IP : HEK-293 cells,

IHC : human pancreas tissue,

IF : HEK-293 cells,

Background Information

Storage

Storage:

Store at -20°C. Stable for one year after shipment.

Storage Buffer:

PBS with 0.02% sodium azide and 50% glycerol pH 7.3.

Aliquoting is unnecessary for -20°C storage

*** 20ul sizes contain 0.1% BSA

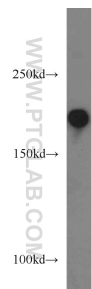
For technical support and original validation data for this product please contact:

T: 1 (888) 4PTGLAB (1-888-478-4522) (toll free in USA), or 1(312) 455-8498 (outside USA)

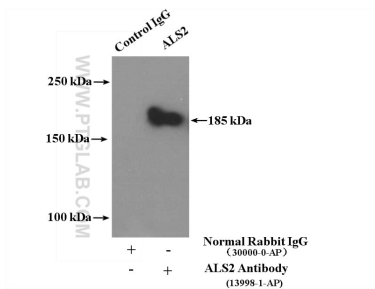
E: proteintech@ptglab.com
W: ptglab.com

This product is exclusively available under Proteintech Group brand and is not available to purchase from any other manufacturer.

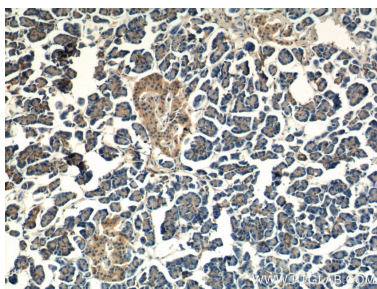
Selected Validation Data



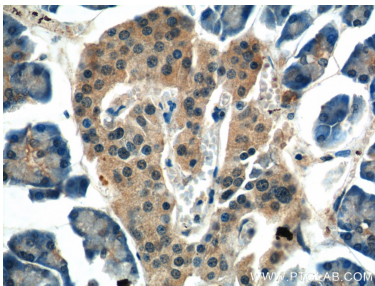
HEK-293 cells were subjected to SDS PAGE followed by western blot with 13998-1-AP (ALS2 antibody) at dilution of 1:500 incubated at room temperature for 1.5 hours.



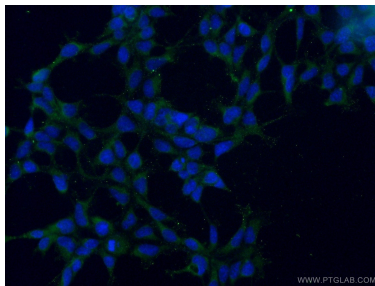
IP Result of anti-ALS2 (IP:13998-1-AP, 4ug; Detection:13998-1-AP 1:300) with HEK-293 cells lysate 4000ug.



Immunohistochemical analysis of paraffin-embedded human pancreas tissue slide using 13998-1-AP (ALS2 Antibody) at dilution of 1:50 (under 10x lens).



Immunohistochemical analysis of paraffin-embedded human pancreas tissue slide using 13998-1-AP (ALS2 Antibody) at dilution of 1:50 (under 40x lens).



Immunofluorescent analysis of (-20°C Ethanol) fixed HEK-293 cells using 13998-1-AP (ALS2 antibody) at dilution of 1:50 and Alexa Fluor 488-conjugated AffiniPure Goat Anti-Rabbit IgG(H+L).