

For Research Use Only

NEDD1 Polyclonal antibody

Catalog Number: 13993-1-AP **1 Publications**



Basic Information

Catalog Number: 13993-1-AP	GenBank Accession Number: BC027605	Purification Method: Antigen affinity purification
Size: 150ul, Concentration: 200 µg/ml by Nanodrop and 133 µg/ml by Bradford method using BSA as the standard;	GeneID (NCBI): 121441	Recommended Dilutions: WB 1:1000-1:4000 IP 0.5-4.0 ug for IP and 1:500-1:1000 for WB
Source: Rabbit	Full Name: neural precursor cell expressed, developmentally down-regulated 1	IHC 1:20-1:200
Isotype: IgG	Calculated MW: 72 kDa	
Immunogen Catalog Number: AG5077	Observed MW: 75 kDa, 62 kDa	

Applications

Tested Applications: IHC, IP, WB, ELISA	Positive Controls: WB : HEK-293 cells, human brain tissue, SH-SY5Y cells
Cited Applications: IF	IP : HeLa cells,
Species Specificity: human, mouse, rat	IHC : human gliomas tissue,
Cited Species: human	

Note-IHC: suggested antigen retrieval with TE buffer pH 9.0; (*) Alternatively, antigen retrieval may be performed with citrate buffer pH 6.0

Background Information

NEDD1 is required for mitosis progression. NEDD1 promotes the nucleation of microtubules from the spindle. This antibody works well in WB, IHC, IP and IF application.

Notable Publications

Author	Pubmed ID	Journal	Application
Tianyu Wu	36395215	Science	IF

Storage

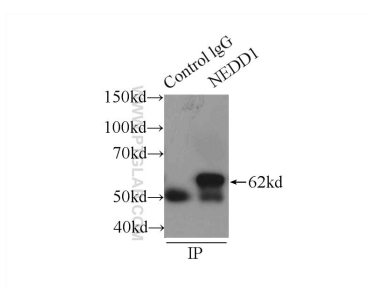
Storage:
Store at -20°C. Stable for one year after shipment.
Storage Buffer:
PBS with 0.02% sodium azide and 50% glycerol pH 7.3.
Aliquoting is unnecessary for -20°C storage

*** 20ul sizes contain 0.1% BSA

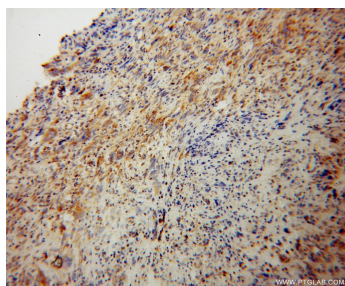
For technical support and original validation data for this product please contact:
T: 1 (888) 4PTGLAB (1-888-478-4522) (toll free in USA), or 1(312) 455-8498 (outside USA)
E: proteintech@ptglab.com
W: ptglab.com

This product is exclusively available under Proteintech Group brand and is not available to purchase from any other manufacturer.

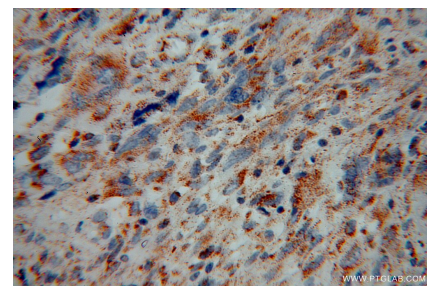
Selected Validation Data



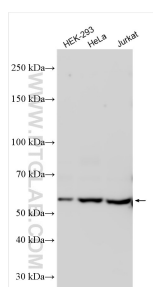
IP Result of anti-NEDD1 (IP:13993-1-AP, 3ug; Detection:13993-1-AP 1:800) with HeLa cells lysate 2150ug.



Immunohistochemical analysis of paraffin-embedded human gliomas using 13993-1-AP (NEDD1 antibody) at dilution of 1:100 (under 10x lens).



Immunohistochemical analysis of paraffin-embedded human gliomas using 13993-1-AP (NEDD1 antibody) at dilution of 1:100 (under 40x lens).



Various lysates were subjected to SDS PAGE followed by western blot with 13993-1-AP (NEDD1 antibody) at dilution of 1:2000 incubated at room temperature for 1.5 hours.