

For Research Use Only

WDFY1 Polyclonal antibody

Catalog Number: 13960-1-AP



Basic Information

Catalog Number: 13960-1-AP	GenBank Accession Number: BC040525	Purification Method: Antigen affinity purification
Size: 150ul , Concentration: 400 µg/ml by Nanodrop and 653 µg/ml by Bradford method using BSA as the standard;	GeneID (NCBI): 57590	Recommended Dilutions: WB 1:500-1:3000
Source: Rabbit	UNIPROT ID: Q8IWB7	
Isotype: IgG	Full Name: WD repeat and FYVE domain containing 1	
Immunogen Catalog Number: AG4877	Calculated MW: 410 aa, 46 kDa	
	Observed MW: 43-46 kDa	

Applications

Tested Applications: WB, ELISA	Positive Controls: WB : THP-1 cells, mouse testis tissue, rat testis tissue
Species Specificity: human, mouse, rat	

Background Information

WD repeating domain FYVE1 (WDFY1) belongs to the WD40 protein family, which plays key roles in diverse cellular processes, including signal transduction, gene transcription, vesicle fusion, and spermatogenesis (PMID: 32867693; PMID: 10322433). WDFY1 is highly expressed in mouse testis and is dispensable for mouse spermatogenesis and male fertility (PMID: 35121371). The bands of 24 kDa and 19 kDa may be potential isoforms of WDFY1.

Storage

Storage:
Store at -20°C. Stable for one year after shipment.
Storage Buffer:
PBS with 0.02% sodium azide and 50% glycerol pH 7.3.
Aliquoting is unnecessary for -20°C storage

*** 20ul sizes contain 0.1% BSA

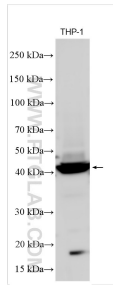
For technical support and original validation data for this product please contact:

T: 1 (888) 4PTGLAB (1-888-478-4522) (toll free in USA), or 1(312) 455-8498 (outside USA)

E: proteintech@ptglab.com
W: ptglab.com

This product is exclusively available under Proteintech Group brand and is not available to purchase from any other manufacturer.

Selected Validation Data



THP-1 cells were subjected to SDS PAGE followed by western blot with 13960-1-AP (WDFY1 antibody) at dilution of 1:1500 incubated at room temperature for 1.5 hours.