

For Research Use Only

# CHEK2 Polyclonal antibody

Catalog Number: 13954-1-AP

Featured Product

32 Publications



## Basic Information

**Catalog Number:**

13954-1-AP

**Size:**

150ul, Concentration: 450 ug/ml by Nanodrop;

**Source:**

Rabbit

**Isotype:**

IgG

**Immunogen Catalog Number:**

AG5065

**GenBank Accession Number:**

BC004207

**GeneID (NCBI):**

11200

**UNIPROT ID:**

O96017

**Full Name:**

CHK2 checkpoint homolog (S. pombe)

**Calculated MW:**

61 kDa

**Observed MW:**

65 kDa

**Purification Method:**

Antigen affinity purification

**Recommended Dilutions:**

WB 1:500-1:1000

IP 0.5-4.0 ug for 1.0-3.0 mg of total protein lysate

IF/ICC 1:50-1:500

## Applications

**Tested Applications:**

WB, IF/ICC, IP, ELISA

**Cited Applications:**

WB, IHC, IF

**Species Specificity:**

human, mouse, rat

**Cited Species:**

human, mouse, rat

**Positive Controls:**

WB : HL-60 cells, HeLa cells, HepG2 cells

IP : HeLa cells,

IF/ICC : HepG2 cells,

## Background Information

Chk2(Checkpoint kinase 2) is also named as CDS1, CHEK2, RAD53 and belongs to the CHK2 subfamily. It is a protein kinase that is activated in response to DNA damage and involved in cell cycle arrest. It also mediates the induction of senescence in fibroblasts, but is dispensable for the induction of telomere dysfunction checkpoints at the stem and progenitor cell level(PMID:20577265). This protein can exist as a dimer (PMID:19782031). Active forms of CHEK2 devoid of phosphorylation at Thr-68 can form unstable dimers(PMID:12386164). Defects in CHEK2 is a cause of susceptibility to breast cancer (BC)(PMID:21618645). It has 12 isoforms produced by alternative splicing.

## Notable Publications

Author	Pubmed ID	Journal	Application
Xin Wen	36249018	Front Oncol	WB
Yiti Zhang	36232630	Int J Mol Sci	WB
Yeunting Hsieh	32988875	Anticancer Res	WB

## Storage

**Storage:**

Store at -20°C. Stable for one year after shipment.

**Storage Buffer:**

PBS with 0.02% sodium azide and 50% glycerol pH 7.3.

Aliquoting is unnecessary for -20°C storage

\*\*\* 20ul sizes contain 0.1% BSA

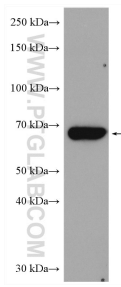
For technical support and original validation data for this product please contact:

T: 1 (888) 4PTGLAB (1-888-478-4522) (toll free in USA), or 1(312) 455-8498 (outside USA)

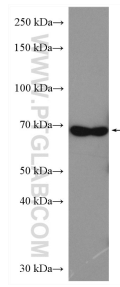
E: proteintech@ptglab.com  
W: ptglab.com

This product is exclusively available under Proteintech Group brand and is not available to purchase from any other manufacturer.

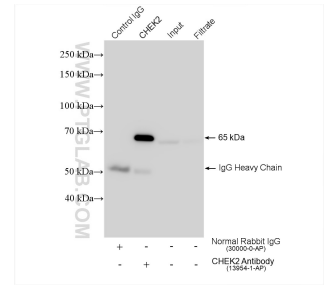
## Selected Validation Data



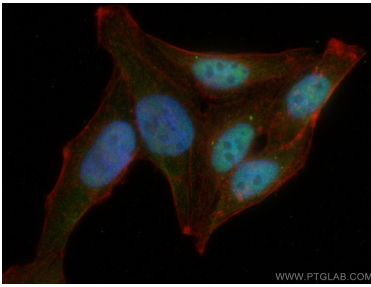
HL-60 cells were subjected to SDS PAGE followed by western blot with 13954-1-AP (Chk2 antibody) at dilution of 1:600 incubated at room temperature for 1.5 hours.



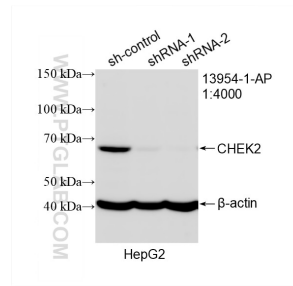
HeLa cells were subjected to SDS PAGE followed by western blot with 13954-1-AP (Chk2 antibody) at dilution of 1:600 incubated at room temperature for 1.5 hours.



IP result of anti-CHEK2 (IP:13954-1-AP, 4ug; Detection:13954-1-AP 1:4000) with HeLa cells lysate 1320 ug.



Immunofluorescent analysis of (4% PFA) fixed HepG2 cells using CHEK2 antibody (13954-1-AP) at dilution of 1:200 and CoralLite@488-Conjugated AffiniPure Goat Anti-Rabbit IgG(H+L), CL594-Phalloidin (red).



WB result of CHEK2 antibody (13954-1-AP; 1:4000; incubated at room temperature for 1.5 hours) with sh-Control and sh-CHEK2 transfected HepG2 cells.