

For Research Use Only

KIF3A Polyclonal antibody

Catalog Number: 13930-1-AP

Featured Product

18 Publications



Basic Information

Catalog Number:

13930-1-AP

Size:

150ul, Concentration: 500 ug/ml by Nanodrop and 333 ug/ml by Bradford method using BSA as the standard;

Source:

Rabbit

Isotype:

IgG

Immunogen Catalog Number:

AG4954

GenBank Accession Number:

BC045542

GeneID (NCBI):

11127

UNIPROT ID:

Q9Y496

Full Name:

kinesin family member 3A

Calculated MW:

80 kDa

Observed MW:

80 kDa

Purification Method:

Antigen affinity purification

Recommended Dilutions:

WB 1:500-1:2000

IP 0.5-4.0 ug for 1.0-3.0 mg of total protein lysate

IHC 1:20-1:200

Applications

Tested Applications:

WB, IP, IHC, ELISA

Cited Applications:

WB, IHC, IF, IP

Species Specificity:

human, mouse

Cited Species:

human, mouse

Note-IHC: suggested antigen retrieval with TE buffer pH 9.0; (*) Alternatively, antigen retrieval may be performed with citrate buffer pH 6.0

Positive Controls:

WB : mouse brain tissue, human cerebellum tissue, mouse cerebellum tissue

IP : mouse brain tissue,

IHC : human gliomas tissue,

Background Information

KIF3A is a subunit of Kinesin II that is essential for intraflagellar transport (IFT). It functions as the anterograde motor to deliver ciliary components to the tip where the axoneme is assembled. Disruption of KIF3A has been reported to block mammalian ciliogenesis. Recently KIF3A has been found to localize to the mother centriole and is required for centrioles organization. This antibody specifically recognizes the endogenous KIF3A protein in mouse embryonic fibroblasts (MEFs) but not in KIF3A^{-/-} lysate. (23386061)

Notable Publications

Author	Pubmed ID	Journal	Application
Molly M Wilson	34705506	Sci Adv	WB
Michal Pruski	31850339	Front Cell Dev Biol	WB
Vincent J Guen	29158396	Proc Natl Acad Sci U S A	WB

Storage

Storage:

Store at -20°C. Stable for one year after shipment.

Storage Buffer:

PBS with 0.02% sodium azide and 50% glycerol, pH7.3

Aliquoting is unnecessary for -20°C storage

*** 20ul sizes contain 0.1% BSA

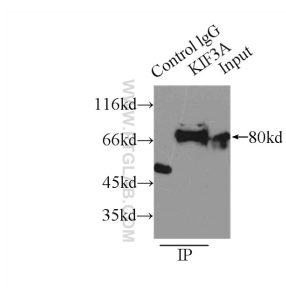
For technical support and original validation data for this product please contact:

T: 1 (888) 4PTGLAB (1-888-478-4522) (toll free in USA), or 1(312) 455-8498 (outside USA)

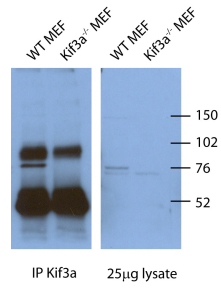
E: proteintech@ptglab.com
W: ptglab.com

This product is exclusively available under Proteintech Group brand and is not available to purchase from any other manufacturer.

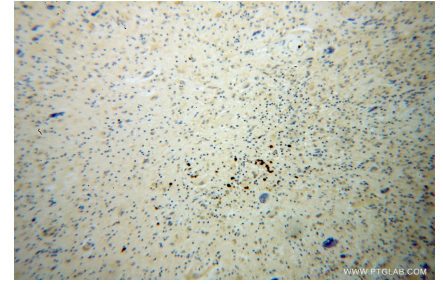
Selected Validation Data



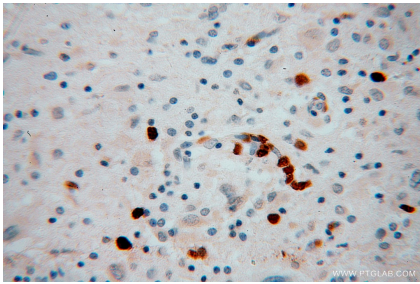
IP result of anti-KIF3A (IP:13930-1-AP, 4ug; Detection:13930-1-AP 1:500) with mouse brain tissue lysate 8000ug.



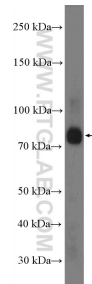
WB and IP result of the antibody anti-KIF3A (13930-1-AP) in mouse cell from Corbit, Kevin.



Immunohistochemical analysis of paraffin-embedded human gliomas using 13930-1-AP (KIF3A antibody) at dilution of 1:100 (under 10x lens).



Immunohistochemical analysis of paraffin-embedded human gliomas using 13930-1-AP (KIF3A antibody) at dilution of 1:100 (under 40x lens).



mouse brain tissue were subjected to SDS PAGE followed by western blot with 13930-1-AP (KIF3A Antibody) at dilution of 1:1000 incubated at room temperature for 1.5 hours.