

For Research Use Only

MDP-1 Polyclonal antibody

Catalog Number: 13929-1-AP



Basic Information

Catalog Number: 13929-1-AP	GenBank Accession Number: BC046912	Purification Method: Antigen affinity purification
Size: 150ul , Concentration: 350 µg/ml by Nanodrop and 267 µg/ml by Bradford method using BSA as the standard;	GeneID (NCBI): 145553	Recommended Dilutions: WB 1:200-1:1000 IHC 1:20-1:200
Source: Rabbit	Full Name: magnesium-dependent phosphatase 1	
Isotype: IgG	Calculated MW: 14 kDa	
Immunogen Catalog Number: AG4949	Observed MW: 14 kDa	

Applications

Tested Applications: IHC, WB, ELISA	Positive Controls: WB : RAW 264.7 cells, HepG2 cells IHC : human liver tissue,
Species Specificity: human, mouse, rat	
Note-IHC: suggested antigen retrieval with TE buffer pH 9.0; (*) Alternatively, antigen retrieval may be performed with citrate buffer pH 6.0	

Background Information

Storage

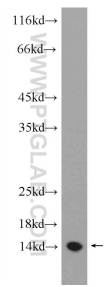
Storage:
Store at -20°C. Stable for one year after shipment.
Storage Buffer:
PBS with 0.02% sodium azide and 50% glycerol pH 7.3.
Aliquoting is unnecessary for -20°C storage

*** 20ul sizes contain 0.1% BSA

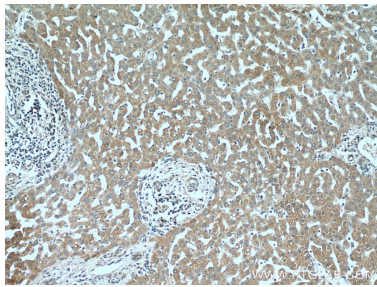
For technical support and original validation data for this product please contact:
T: 1 (888) 4PTGLAB (1-888-478-4522) (toll free in USA), or 1(312) 455-8498 (outside USA)
E: proteintech@ptglab.com
W: ptglab.com

This product is exclusively available under Proteintech Group brand and is not available to purchase from any other manufacturer.

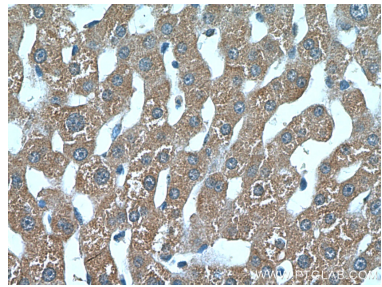
Selected Validation Data



RAW 264.7 cells were subjected to SDS PAGE followed by western blot with 13929-1-AP (MDP-1 Antibody) at dilution of 1:100 incubated at room temperature for 1.5 hours.



Immunohistochemical analysis of paraffin-embedded human liver tissue slide using 13929-1-AP (MDP-1 Antibody) at dilution of 1:100 (under 10x lens).



Immunohistochemical analysis of paraffin-embedded human liver tissue slide using 13929-1-AP (MDP-1 Antibody) at dilution of 1:100 (under 40x lens).