

For Research Use Only

# MITF Polyclonal antibody

Catalog Number: 13092-1-AP **28 Publications**



## Basic Information

**Catalog Number:**

13092-1-AP

**Size:**

150ul, Concentration: 550 µg/ml by Nanodrop;

**Source:**

Rabbit

**Isotype:**

IgG

**Immunogen Catalog Number:**

AG3679

**GenBank Accession Number:**

BC012503

**GeneID (NCBI):**

4286

**UNIPROT ID:**

O75030

**Full Name:**

microphthalmia-associated transcription factor

**Calculated MW:**

91 aa, 10 kDa, 59 kDa

**Observed MW:**

59-65 kDa

**Purification Method:**

Antigen affinity purification

**Recommended Dilutions:**

WB 1:500-1:3000

IP 0.5-4.0 µg for 1.0-3.0 mg of total protein lysate

FC 1:20-1:200

## Applications

**Tested Applications:**

WB, IP, FC, ELISA

**Cited Applications:**

WB, IF

**Species Specificity:**

human, mouse, rat

**Cited Species:**

human, rat, mouse

**Positive Controls:**

**WB:** A549 cells, Jurkat cells, mouse heart tissue, rat skin tissue, NIH/3T3 cells

**IP:** mouse heart tissue,

**FC:** hESC cells,

## Background Information

The retinal pigment epithelium (RPE) has an essential role in maintaining visual function and dedifferentiation of RPE contributes to the pathophysiology of several ocular diseases [PMID: 22523078]. Microphthalmia-associated transcription factor (MITF) is a key regulator of RPE differentiation that is also down-regulated in dedifferentiated hRPE cells. MITF is a basic helix-loop-helix (hHLH)-leucine zipper protein that involves in the development of various cell types, including neural crest-derived melanocytes and optic cup-derived retinal pigment epithelial cells [PMID: 10578055].

## Notable Publications

Author	Pubmed ID	Journal	Application
Kaushal Asrani	31527310	J Clin Invest	WB
Bohee Jang	34650007	Mol Cells	WB
Haibin Tian	36185374	iScience	IF

## Storage

**Storage:**

Store at -20°C. Stable for one year after shipment.

**Storage Buffer:**

PBS with 0.02% sodium azide and 50% glycerol pH 7.3.

Aliquoting is unnecessary for -20°C storage

\*\*\* 20ul sizes contain 0.1% BSA

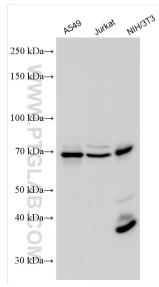
For technical support and original validation data for this product please contact:

T: 1 (888) 4PTGLAB (1-888-478-4522) (toll free in USA), or 1(312) 455-8498 (outside USA)

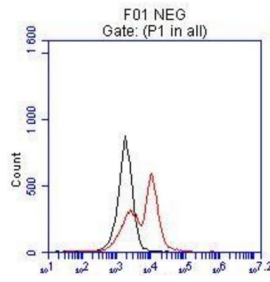
E: [proteintech@ptglab.com](mailto:proteintech@ptglab.com)  
W: [ptglab.com](http://ptglab.com)

This product is exclusively available under Proteintech Group brand and is not available to purchase from any other manufacturer.

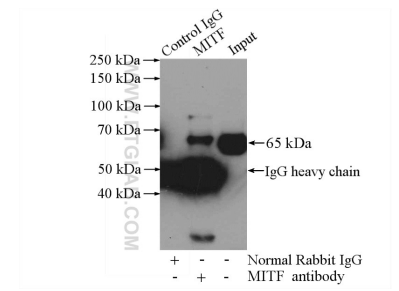
## Selected Validation Data



Various lysates were subjected to SDS PAGE followed by western blot with 13092-1-AP (MITF antibody) at dilution of 1:1500 incubated at room temperature for 1.5 hours.



FC result of anti-MITF (13092-1-AP, 1:50) with hESC which spontaneous differentiation toward retinal lineage (RPE). (Black: control; Red MITF).



IP result of anti-MITF (IP:13092-1-AP, 4ug; Detection:13092-1-AP 1:1000) with mouse heart tissue lysate 4000ug.