

For Research Use Only

CUL4B Polyclonal antibody

Catalog Number: 12916-1-AP

Featured Product

82 Publications



Basic Information

Catalog Number:

12916-1-AP

Size:

150ul, Concentration: 350 ug/ml by Nanodrop;

Source:

Rabbit

Isotype:

IgG

Immunogen Catalog Number:

AG3563

GenBank Accession Number:

BC036216

GeneID (NCBI):

8450

UNIPROT ID:

Q13620

Full Name:

cullin 4B

Calculated MW:

913 aa, 104 kDa

Observed MW:

102 kDa

Purification Method:

Antigen affinity purification

Recommended Dilutions:

WB 1:1000-1:6000

IP 0.5-4.0 ug for 1.0-3.0 mg of total protein lysate

IF/ICC 1:500-1:2000

Applications

Tested Applications:

WB, IF/ICC, IP, ELISA

Cited Applications:

WB, IHC, IF, IP, CoIP, RIP

Species Specificity:

human, mouse

Cited Species:

human, mouse, rat, canine

Positive Controls:

WB : HEK-293 cells, HeLa cells

IP : HeLa cells,

IF/ICC : HeLa cells,

Background Information

Cullin-RING ligases (CRLs) complexes participate in the regulation of diverse cellular processes, including cell cycle progression, transcription, signal transduction and development (PMID: 21816341)(PMID: 21554755). Serving as the scaffold protein, cullins are crucial for the assembly of ligase complexes, which recognize and target various substrates for proteosomal degradation. Two cullin 4 (CUL4) proteins, CUL4A (87 kDa) and CUL4B(104 kDa), are two members in cullin family with 83% of identity. Mutations in human CUL4B are one of the major causes of X-linked mental retardation. Cul4b knockout mice demonstrated that CUL4B is indispensable for embryonic development in the mouse (PMID: 22606329). This antibody may detect both CUL4A (87 kDa) and CUL4B(104 kDa).

Notable Publications

Author	Pubmed ID	Journal	Application
Xu Zhang	36212422	Front Oncol	WB
Liu Helio C HC	22992378	BMC Neurosci	WB, IF
Fumei Chen	36056732	Gigascience	WB

Storage

Storage:

Store at -20°C. Stable for one year after shipment.

Storage Buffer:

PBS with 0.02% sodium azide and 50% glycerol pH 7.3.

Aliquoting is unnecessary for -20°C storage

*** 20ul sizes contain 0.1% BSA

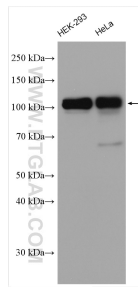
For technical support and original validation data for this product please contact:

T: 1 (888) 4PTGLAB (1-888-478-4522) (toll free in USA), or 1(312) 455-8498 (outside USA)

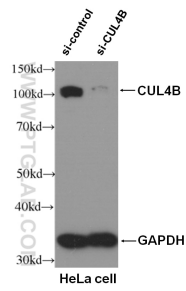
E: proteintech@ptglab.com
W: ptglab.com

This product is exclusively available under Proteintech Group brand and is not available to purchase from any other manufacturer.

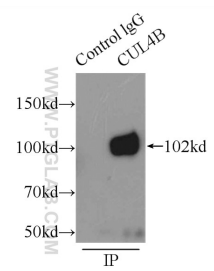
Selected Validation Data



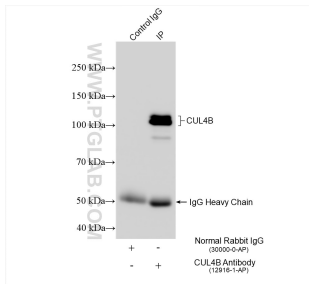
Various lysates were subjected to SDS PAGE followed by western blot with 12916-1-AP (CUL4B antibody) at dilution of 1:3000 incubated at room temperature for 1.5 hours.



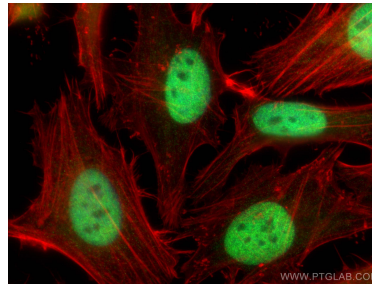
WB result of CUL4B antibody (12916-1-AP, 1:2,000) with si-Control and si-CUL4B transfected HeLa cells.



IP result of anti-CUL4B (IP:12916-1-AP, 3ug; Detection:12916-1-AP 1:1000) with HeLa cells lysate 4650ug.



IP result of anti-CUL4B (IP:12916-1-AP, 4ug; Detection:12916-1-AP 1:5000) with HeLa cells lysate 1280 ug.



Immunofluorescent analysis of (4% PFA) fixed HeLa cells using CUL4B antibody (12916-1-AP) at dilution of 1:1500 and CoraLite@488-Conjugated AffiniPure Goat Anti-Rabbit IgG(H+L), CL594-Phalloidin (red).