

For Research Use Only

# CaMKII Gamma Polyclonal antibody, PBS Only

Catalog Number: 12666-2-PBS

Featured Product



## Basic Information

**Catalog Number:**

12666-2-PBS

**Size:**

100ug, Concentration: 1 mg/ml by  
Nanodrop;

**Source:**

Rabbit

**Isotype:**

IgG

**Immunogen Catalog Number:**

AG3348

**GenBank Accession Number:**

BC034044

**GeneID (NCBI):**

818

**UNIPROT ID:**

Q13555

**Full Name:**

calcium/calmodulin-dependent  
protein kinase II gamma

**Calculated MW:**

527 aa, 59 kDa

**Observed MW:**

59 kDa

**Purification Method:**

Antigen affinity purification

## Applications

**Tested Applications:**

WB, IHC, IF/ICC, IP, Indirect ELISA

**Species Specificity:**

human, mouse, rat

## Background Information

CaMKII gamma, also named CAMKG or CAMK2G, belongs to the protein kinase superfamily, CAMK Ser/Thr protein kinase family, and CaMK subfamily. CAMK2 is a prominent kinase in the central nervous system that may function in long-term potentiation and neurotransmitter release. CAMK2G is expressed in human beta cells as a candidate gene for Type II (non-insulin-dependent) diabetes mellitus. Some studies can be used to assess the role of CAMK2G in the susceptibility to Type II diabetes (PMID: 12032636). CAMK2G has some isoforms with the MW of 55-66 kDa and this antibody can recognize all the isoforms of CAMK2G. This antibody may have cross-reaction with CAMK2A/B/D due to the high homology.

## Storage

**Storage:**

Store at -80°C.

**Storage Buffer:**

PBS Only

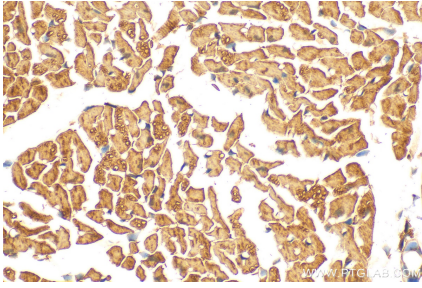
For technical support and original validation data for this product please contact:

T: 1 (888) 4PTGLAB (1-888-478-4522) (toll free  
in USA), or 1(312) 455-8498 (outside USA)

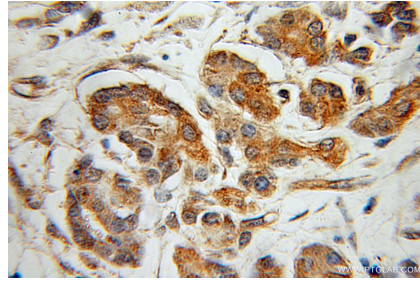
E: [proteintech@ptglab.com](mailto:proteintech@ptglab.com)  
W: [ptglab.com](http://ptglab.com)

This product is exclusively available under Proteintech Group brand and is not available to purchase from any other manufacturer.

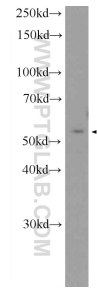
## Selected Validation Data



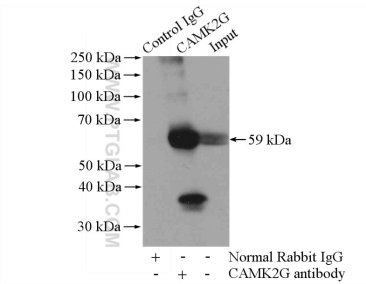
Immunohistochemical analysis of paraffin-embedded mouse heart tissue slide using 12666-2-AP (CaMKII Gamma antibody) at dilution of 1:200 (under 40x lens). Heat mediated antigen retrieval with Tris-EDTA buffer (pH 9.0). This data was developed using the same antibody clone with 12666-2-PBS in a different storage buffer formulation.



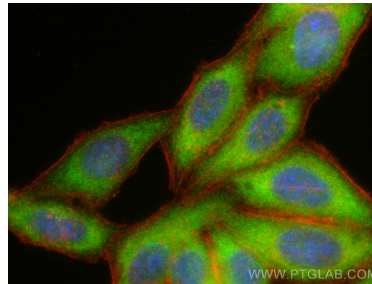
Immunohistochemical analysis of paraffin-embedded human pancreas cancer using 12666-2-AP (CaMKII gamma antibody) at dilution of 1:100 (under 10x lens). This data was developed using the same antibody clone with 12666-2-PBS in a different storage buffer formulation.



SMMC-7721 cells were subjected to SDS PAGE followed by western blot with 12666-2-AP (CaMKII gamma antibody) at dilution of 1:2000 incubated at room temperature for 1.5 hours. This data was developed using the same antibody clone with 12666-2-PBS in a different storage buffer formulation.



IP result of anti-CaMKII Gamma (IP:12666-2-AP, 4ug; Detection:12666-2-AP 1:1000) with mouse heart tissue lysate 3200ug. This data was developed using the same antibody clone with 12666-2-PBS in a different storage buffer formulation.



Immunofluorescent analysis of (-20°C Ethanol) fixed HepG2 cells using CaMKII Gamma antibody (12666-2-AP) at dilution of 1:400 and Multi-rAb Coralite® Plus 488-Goat Anti-Rabbit Recombinant Secondary Antibody (H+L) (RGAR002), CL594-phalloidin (red). This data was developed using the same antibody clone with 12666-2-PBS in a different storage buffer formulation.