

For Research Use Only

RBBP8 Polyclonal antibody

Catalog Number: 12624-1-AP

Featured Product

4 Publications



Basic Information

Catalog Number: 12624-1-AP	GenBank Accession Number: BC030590	Purification Method: Antigen affinity purification
Size: 150ul , Concentration: 260 ug/ml by Nanodrop and 240 ug/ml by Bradford method using BSA as the standard;	GeneID (NCBI): 5932	Recommended Dilutions: WB 1:500-1:1000
Source: Rabbit	UNIPROT ID: Q99708	
Isotype: IgG	Full Name: retinoblastoma binding protein 8	
Immunogen Catalog Number: AG3314	Calculated MW: 103 kDa	
	Observed MW: 120 kDa	

Applications

Tested Applications: WB, ELISA	Positive Controls: WB : Raji cells, A431 cells
Cited Applications: WB	
Species Specificity: human, mouse	
Cited Species: human	

Background Information

RBBP8 is an endonuclease that cooperates with the MRE11-RAD50-NBN (MRN) complex in processing meiotic and mitotic double-strand breaks (DSBs) by ensuring both resection and intrachromosomal association of the broken ends. It functions downstream of the MRN complex and ATM, promotes ATR activation and its recruitment to DSBs in the S/G2 phase facilitating the generation of ssDNA. It interacted with BRCA1 to form a complex that regulates CHEK1 activation and controls cell cycle G2/M checkpoints on DNA damage. Also it promotes microhomology-mediated alternative end joining (A-NHEJ) during class-switch recombination and plays an essential role in chromosomal translocations

Notable Publications

Author	Pubmed ID	Journal	Application
Yang Yu	31636387	Oncogene	WB
Lei Yang	31418900	Cell Biochem Funct	WB
Qunsong Tan	38657865	J Biol Chem	WB

Storage

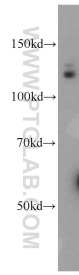
Storage:
Store at -20°C. Stable for one year after shipment.
Storage Buffer:
PBS with 0.02% sodium azide and 50% glycerol pH 7.3.
Aliquoting is unnecessary for -20°C storage

*** 20ul sizes contain 0.1% BSA

For technical support and original validation data for this product please contact:
T: 1 (888) 4PTGLAB (1-888-478-4522) (toll free in USA), or 1(312) 455-8498 (outside USA)
E: proteintech@ptglab.com
W: ptglab.com

This product is exclusively available under Proteintech Group brand and is not available to purchase from any other manufacturer.

Selected Validation Data



Raji cells were subjected to SDS PAGE followed by western blot with 12624-1-AP (RBBP8 antibody) at dilution of 1:600 incubated at room temperature for 1.5 hours.