

For Research Use Only

# GCLC Polyclonal antibody, PBS Only

Catalog Number: 12601-1-PBS

Featured Product



## Basic Information

### Catalog Number:

12601-1-PBS

### Size:

100ug , Concentration: 1mg/ml by Nanodrop;

### Source:

Rabbit

### Isotype:

IgG

### Immunogen Catalog Number:

AG3252

### GenBank Accession Number:

BC022487

### GeneID (NCBI):

2729

### UNIPROT ID:

P48506

### Full Name:

glutamate-cysteine ligase, catalytic subunit

### Calculated MW:

637 aa, 73 kDa

### Observed MW:

73 kDa

### Purification Method:

Antigen affinity purification

## Applications

### Tested Applications:

WB, IHC, IP, ELISA

### Species Specificity:

human, mouse, rat

## Background Information

GCLC (Glutamate--cysteine ligase catalytic subunit) belongs to the glutamate--cysteine ligase type 3 family. It is also named as GLCL, GLCLC. It is the first rate-limiting enzyme in glutathione (GSH) biosynthesis. GCLC gene may be associated with coronary endothelial vasomotor dysfunction and myocardial infarction (MI) (PMID:12598062). Defects in GCLC are the cause of hemolytic anemia (HAGGSD).

## Storage

### Storage:

Store at -80°C.

### Storage Buffer:

PBS only, pH7.3

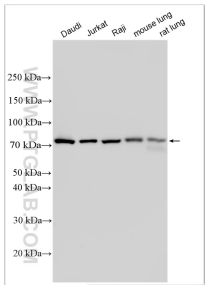
For technical support and original validation data for this product please contact:

T: 1 (888) 4PTGLAB (1-888-478-4522) (toll free in USA), or 1(312) 455-8498 (outside USA)

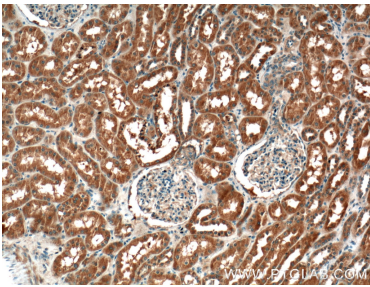
E: [proteintech@ptglab.com](mailto:proteintech@ptglab.com)  
W: [ptglab.com](http://ptglab.com)

This product is exclusively available under Proteintech Group brand and is not available to purchase from any other manufacturer.

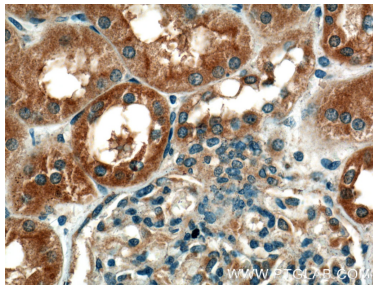
Selected Validation Data



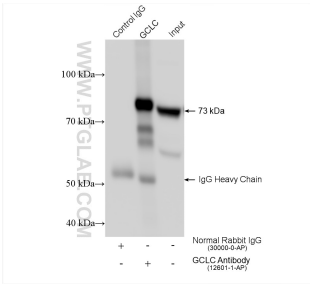
Various lysates were subjected to SDS PAGE followed by western blot with 12601-1-AP (GCLC antibody) at dilution of 1:15000 incubated at room temperature for 1.5 hours. This data was developed using the same antibody clone with 12601-1-PBS in a different storage buffer formulation.



Immunohistochemical analysis of paraffin-embedded human kidney tissue slide using 12601-1-AP (GCLC Antibody) at dilution of 1:200 (under 10x lens). This data was developed using the same antibody clone with 12601-1-PBS in a different storage buffer formulation.



Immunohistochemical analysis of paraffin-embedded human kidney tissue slide using 12601-1-AP (GCLC Antibody) at dilution of 1:200 (under 40x lens). This data was developed using the same antibody clone with 12601-1-PBS in a different storage buffer formulation.



IP result of anti-GCLC (IP:12601-1-AP, 4ug; Detection:12601-1-AP 1:5000) with mouse kidney tissue lysate 2160 ug. This data was developed using the same antibody clone with 12601-1-PBS in a different storage buffer formulation.