

For Research Use Only

# OLFM3 Polyclonal antibody

Catalog Number: 12596-1-AP

1 Publications



## Basic Information

<b>Catalog Number:</b> 12596-1-AP	<b>GenBank Accession Number:</b> BC022531	<b>Purification Method:</b> Antigen affinity purification
<b>Size:</b> 150ul , Concentration: 300 ug/ml by Nanodrop and 253 ug/ml by Bradford method using BSA as the standard;	<b>GeneID (NCBI):</b> 118427	<b>Recommended Dilutions:</b> WB 1:500-1:2000 IHC 1:20-1:200 IF/ICC 1:10-1:100
<b>Source:</b> Rabbit	<b>UNIPROT ID:</b> Q96PB7	
<b>Isotype:</b> IgG	<b>Full Name:</b> olfactomedin 3	
<b>Immunogen Catalog Number:</b> AG3207	<b>Calculated MW:</b> 458 aa, 53 kDa	
	<b>Observed MW:</b> 50-55 kDa	

## Applications

<b>Tested Applications:</b> WB, IHC, IF/ICC, ELISA	<b>Positive Controls:</b> WB : PC-3 cells, A2780 cells, human liver tissue, mouse liver tissue, NIH/3T3 cells IHC : human liver cancer tissue, IF/ICC : HepG2 cells,
<b>Cited Applications:</b> WB, IF	
<b>Species Specificity:</b> human, mouse	
<b>Cited Species:</b> human	
<b>Note-IHC: suggested antigen retrieval with TE buffer pH 9.0; (*) Alternatively, antigen retrieval may be performed with citrate buffer pH 6.0</b>	

## Notable Publications

Author	Pubmed ID	Journal	Application
Shirong Tang	32850838	Front Cell Dev Biol	WB,IF

## Storage

**Storage:**  
Store at -20°C. Stable for one year after shipment.  
**Storage Buffer:**  
PBS with 0.02% sodium azide and 50% glycerol pH 7.3.  
Aliquoting is unnecessary for -20°C storage

\*\*\* 20ul sizes contain 0.1% BSA

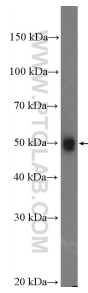
For technical support and original validation data for this product please contact:

T: 1 (888) 4PTGLAB (1-888-478-4522) (toll free in USA), or 1(312) 455-8498 (outside USA)

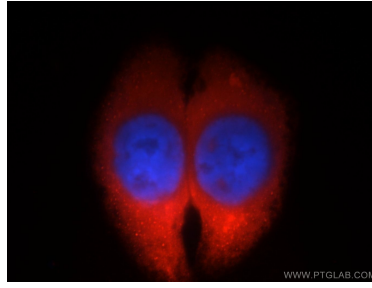
E: proteintech@ptglab.com  
W: ptglab.com

This product is exclusively available under Proteintech Group brand and is not available to purchase from any other manufacturer.

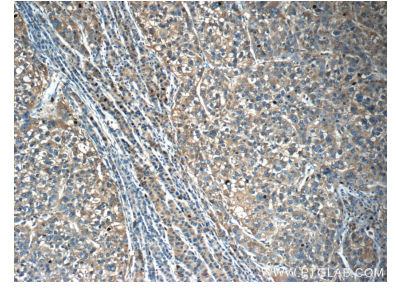
## Selected Validation Data



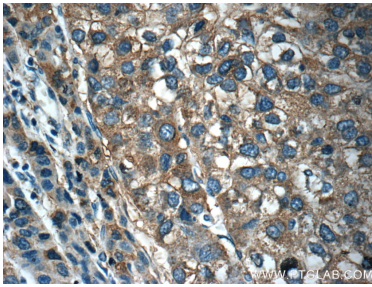
PC-3 cells were subjected to SDS PAGE followed by western blot with 12596-1-AP (OLFM3 Antibody) at dilution of 1:1000 incubated at room temperature for 1.5 hours.



Immunofluorescent analysis of HepG2 cells, using OLFM3 antibody 12596-1-AP at 1:25 dilution and Rhodamine-labeled goat anti-rabbit IgG (red). Blue pseudocolor = DAPI (fluorescent DNA dye).



Immunohistochemical analysis of paraffin-embedded human liver cancer tissue slide using 12596-1-AP (OLFM3 Antibody) at dilution of 1:50 (under 10x lens).



Immunohistochemical analysis of paraffin-embedded human liver cancer tissue slide using 12596-1-AP (OLFM3 Antibody) at dilution of 1:50 (under 40x lens).