

For Research Use Only

TORC2 Polyclonal antibody, PBS Only

Catalog Number: 12497-1-PBS

Featured Product



Basic Information

Catalog Number:

12497-1-PBS

Size:

100ug, Concentration: 1 mg/ml by Nanodrop;

Source:

Rabbit

Isotype:

IgG

Immunogen Catalog Number:

AG3167

GenBank Accession Number:

BC053562

GeneID (NCBI):

200186

UNIPROT ID:

Q53ETO

Full Name:

CREB regulated transcription coactivator 2

Calculated MW:

693 aa, 73 kDa

Observed MW:

73 kDa

Purification Method:

Antigen affinity purification

Applications

Tested Applications:

WB, IHC, IF/ICC, Indirect ELISA

Species Specificity:

human, mouse, rat

Background Information

CRTC2, also named as TORC2, belongs to the TORC family. It is a transcriptional coactivator for CREB1 which activates transcription through both consensus and variant cAMP response element (CRE) sites. It acts as a coactivator, in the SIK/TORC signaling pathway, being active when dephosphorylated and acts independently of CREB1 'Ser-133' phosphorylation. CRTC2 enhances the interaction of CREB1 with TAF4. It regulates gluconeogenesis as a component of the LKB1/AMPK/TORC2 signaling pathway. CRTC2 regulates the expression of specific genes such as the steroidogenic gene, StAR. TORC2 was recently shown to be an important regulator of gluconeogenesis in the livers of mammals. It is one of the other key regulators of CRE-dependent MIE gene expression in NT2 cells. This regulation is linked to VIP-induced TORC2 dephosphorylation and translocation to the nucleus. (PMID: 19369332, 20504934).

Storage

Storage:

Store at -80°C.

Storage Buffer:

PBS Only

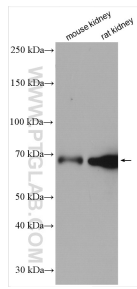
For technical support and original validation data for this product please contact:

T: 1 (888) 4PTGLAB (1-888-478-4522) (toll free in USA), or 1(312) 455-8498 (outside USA)

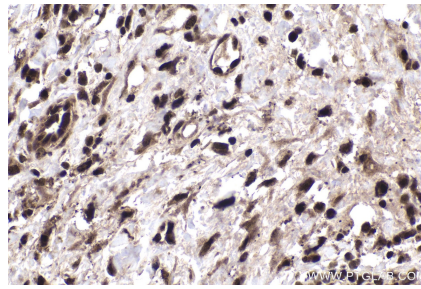
E: proteintech@ptglab.com
W: ptglab.com

This product is exclusively available under Proteintech Group brand and is not available to purchase from any other manufacturer.

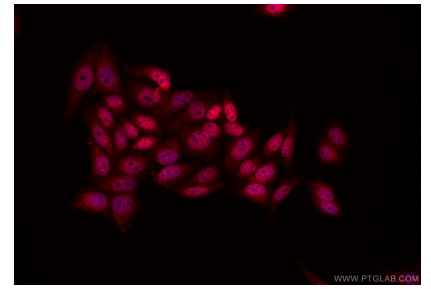
Selected Validation Data



Various lysates were subjected to SDS PAGE followed by western blot with 12497-1-AP (CRTC2,TORC2 antibody) at dilution of 1:2000 incubated at room temperature for 1.5 hours. This data was developed using the same antibody clone with 12497-1-PBS in a different storage buffer formulation.



Immunohistochemical analysis of paraffin-embedded human skin cancer tissue slide using 12497-1-AP (CRTC2,TORC2 antibody) at dilution of 1:200 (under 40x lens). Heat mediated antigen retrieval with Tris-EDTA buffer (pH 9.0). This data was developed using the same antibody clone with 12497-1-PBS in a different storage buffer formulation.



Immunofluorescent analysis of (4% PFA) fixed HepG2 cells using CRTC2,TORC2 antibody (12497-1-AP) at dilution of 1:200 and CoraLite@594-Conjugated Goat Anti-Rabbit IgG(H+L) (SA00013-4). This data was developed using the same antibody clone with 12497-1-PBS in a different storage buffer formulation.