

For Research Use Only

SHC1 Polyclonal antibody, PBS Only

Catalog Number: 12496-1-PBS

Featured Product



Basic Information

Catalog Number:

12496-1-PBS

Size:

100ug, Concentration: 1 mg/ml by Nanodrop;

Source:

Rabbit

Isotype:

IgG

Immunogen Catalog Number:

AG3165

GenBank Accession Number:

BC014158

GeneID (NCBI):

6464

UNIPROT ID:

P29353

Full Name:

SHC (Src homology 2 domain containing) transforming protein 1

Calculated MW:

66 kDa

Observed MW:

66 kDa, 52 kDa, 46 kDa

Purification Method:

Antigen affinity purification

Applications

Tested Applications:

WB, IHC, IF/ICC, Indirect ELISA

Species Specificity:

human, mouse, rat

Background Information

The proto-oncogene SHC family consists of SHCA, SHCB, SHCC, and SHCD4 gene members, which can encode 7 kinds of cohesive molecules. SHC family is widely expressed and functional. The SHC1 gene is located in zone 1, region 2 of human chromosome 1. SHC1 is believed to be involved in inhibiting neuronal apoptosis and regulating the receptor tyrosine kinase pathway. SHC1 sensitizes cancer cells to the 8-Cl-cAMP treatment.

Storage

Storage:

Store at -80°C.

Storage Buffer:

PBS Only

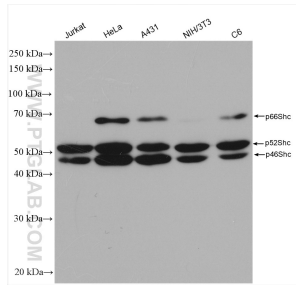
For technical support and original validation data for this product please contact:

T: 1 (888) 4PTGLAB (1-888-478-4522) (toll free in USA), or 1(312) 455-8498 (outside USA)

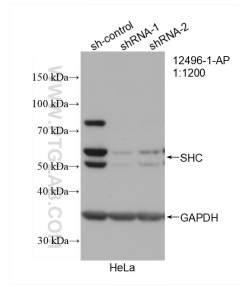
E: proteintech@ptglab.com
W: ptglab.com

This product is exclusively available under Proteintech Group brand and is not available to purchase from any other manufacturer.

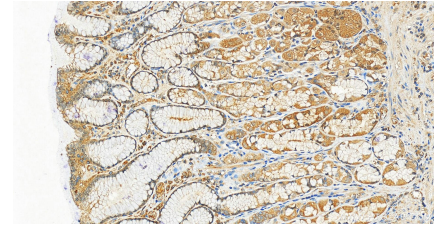
Selected Validation Data



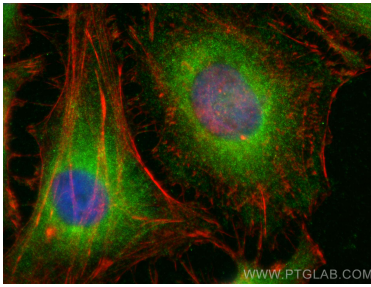
Various lysates were subjected to SDS PAGE followed by western blot with 12496-1-AP (SHC antibody) at dilution of 1:1000 incubated at room temperature for 1.5 hours. This data was developed using the same antibody clone with 12496-1-PBS in a different storage buffer formulation.



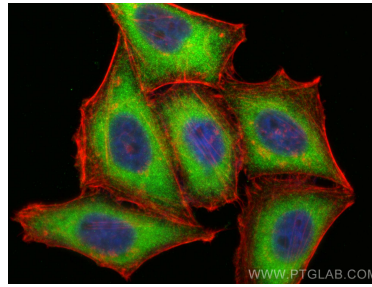
WB result of SHC antibody (12496-1-AP; 1:1200; incubated at room temperature for 1.5 hours) with sh-Control and sh-SHC transfected HeLa cells. This data was developed using the same antibody clone with 12496-1-PBS in a different storage buffer formulation.



Immunohistochemical analysis of paraffin-embedded human normal stomach slide using 12496-1-AP (SHC antibody) at dilution of 1:200 (under 20x lens). Heat mediated antigen retrieval with Tris-EDTA buffer (pH 9.0). This data was developed using the same antibody clone with 12496-1-PBS in a different storage buffer formulation.



Immunofluorescent analysis of (-20°C Ethanol) fixed HeLa cells using SHC antibody (12496-1-AP) at dilution of 1:200 and CoraLite®488-Conjugated AffiniPure Goat Anti-Rabbit IgG(H+L) (SA00013-2), CL594-phalloidin (red). This data was developed using the same antibody clone with 12496-1-PBS in a different storage buffer formulation.



Immunofluorescent analysis of (-20°C Ethanol) fixed HepG2 cells using SHC antibody (12496-1-AP) at dilution of 1:200 and CoraLite®488-Conjugated AffiniPure Goat Anti-Rabbit IgG(H+L) (SA00013-2), CL594-phalloidin (red). This data was developed using the same antibody clone with 12496-1-PBS in a different storage buffer formulation.